



Recreational Equipment for Commercial Pools

ABOUT US

At Spectrum Aquatics, we have been dedicated to building your trust and providing reliable competition, recreation, accessibility, and pool deck equipment since 1972. Our team of hardworking and committed individuals takes great pride in crafting high-quality and custom products at our shop in Missoula, Montana. By combining our expertise and passion for innovation, we consistently strive to surpass your expectations and deliver exceptional solutions to meet your unique needs.

Choosing Spectrum Aquatics means you're embracing unparalleled professionalism, meticulous attention to detail, and exemplary customer service. It's our privilege to be recognized as your dependable ally in the aquatics industry.

Shane Clagett,
General Manager of Spectrum Aquatics



CONTACT US:

Parts and Warranty

Direct: (406) 532-6321

Email: service@spectrumproducts.com

Sales

Direct: (800) 791-8056

Email: info@spectrumproducts.com



Visit our Website
www.spectrumproducts.com

PHONE 800.791.8056 | FAX 800.791.8057 7100 SPECTRUM LANE, MISSOULA, MONTANA 59808

TO ORDER THE SPECTRUM AQUATICS® PRODUCTS IN THIS CATALOG, PLEASE CONTACT YOUR LOCAL REPRESENTATIVE AT THE PHONE NUMBER BELOW OR VISIT OUR WEBSITE AT: WWW.SPECTRUMPRODUCTS.COM



800.791.8056 | info@spectrumproducts.com
www.spectrumproducts.com

POOLSIDE ADVENTURES® CLIMBING WALLS

Join the thousands of homes, recreation and fitness centers around the country that have added an AquaClimb®, AquaZip'N®, or AquaNinja® to their pools. An AquaClimb wall attracts new visitors and serves many different types of users. From helping kids build self-esteem, to adult strength training, our climbing walls expand your poolside programming with a low-maintenance attraction with the “wow factor” to bring in new patrons.

Poolside Adventures products can be found in a range of facilities and places, including recreation centers & health clubs, camps, universities & colleges, swim clubs, private residences, and even military uses. With a wide range of customizable products, AquaClimb aquatic climbing walls are ideal for any pool facility. All Poolside Adventures products are designed, fabricated, and assembled in the USA!

- Full modular system
- Three height options, two panel widths and unlimited panel sections.
- Available in clear and blue flat panels
- One standard design that fits all climbing surface panel options
- 304L stainless steel with epoxy coating for wipe clean surfaces
- Design load testing to withstand 100 MPH wind loads
- Weight limit 300 pounds per each vertical section



AquaClimb® Climbing Walls - Flat Panel Walls

Product

AquaClimb® Krystal

AquaClimb® Challenger

AQUACLIMB® Depth Requirements

Panel Options	A Minimum Pool Depth	B Drop Zone	C Plummet line from wall	D Available climbing height	E Height of top foothold*	F Above deck wall height
3 High Alt	5'	9'	1' 8"	8' 10"	3' 1"	9' 8"
3 High	6'	9'	1' 8"	9' 10"	3' 11"	9' 8"
4 High Alt	6'	10'	2' 10"	12' 1"	6' 3"	12' 11"
4 High	7'	10'	2' 10"	13' 1"	7' 1"	12' 11"
5 High Alt	8'	12'	3' 3"	15' 5"	9' 6"	16' 1"
5 High	9'	12'	3' 3"	16' 5"	10' 4"	16' 1"
6 High (Kurve Only)	10'	12'	5' 0"	19' 8"	13' 10"	19' 4"

*Based on climber's feet positioned at least 3' below highest hand grip

Alt - Alternate configurations will have the top row of handholds plugged for non-climbing terrain to meet pool depth requirements. Important Safety Note: AquaClimb safety distances and pool depths are based upon a climber entering the water feet first. The AquaClimb was designed for a feet first entry at all times and supervision must be present when the AquaClimb is in use. To ensure the maximum level of safety, there must be no diving at any time.



POOLSIDE ADVENTURES® CLIMBING WALLS

The 3D line provides upgraded features from our Krystal_line, including an enhanced climbing experience by offering contoured panels, replicating a more natural rock climbing experience, among other features. The 3D includes aesthetically pleasing translucent panels that allow light to pass through, projecting natural lighting both indoors and outdoors. These are also lifeguards' preferred choice, as the translucent feature allows visibility behind the wall, while also giving the climber privacy from onlookers. Poolside Adventures offers fully custom paint schemes, holds, and will put just about any logo or graphic you choose. We want to help reinforce your brand or your sponsors' brands. Available as flippable 3D contoured panels in three translucent color options (Ice, Glacier, and Jade), as well as two solid painted color schemes (Ascent and Canyon).

Pricing varies by panel height and width. Contact us today to discuss your project and receive detailed pricing. AquaClimb 3D Pool Climbing walls are designed to build courageous kids for life's great adventure.

- Full modular system with 3D contour panels in UV and chlorine resistant polycarbonate panels
- Three height options and unlimited width options
- One standard design that fits all climbing surface panel options
- 304L stainless steel with epoxy coating for wipe clean surfaces
- Design load testing to withstand 100 MPH wind loads
- Weight limit 300 pounds per each vertical section



AquaClimb® Climbing Walls - 3D Panel Walls

Product

AquaClimb® Glacier

AquaClimb® Ice

AquaClimb® Challenger Contour

AQUACLIMB® Depth Requirements

Panel Options	A Minimum Pool Depth	B Drop Zone	C Plummet line from wall	D Available climbing height	E Height of top foothold*	F Above deck wall height
3 High Alt	5'	9'	1' 8"	8' 10"	3' 1"	9' 8"
3 High	6'	9'	1' 8"	9' 10"	3' 11"	9' 8"
4 High Alt	6'	10'	2' 10"	12' 1"	6' 3"	12' 11"
4 High	7'	10'	2' 10"	13' 1"	7' 1"	12' 11"
5 High Alt	8'	12'	3' 3"	15' 5"	9' 6"	16' 1"
5 High	9'	12'	3' 3"	16' 5"	10' 4"	16' 1"
6 High (Kurve Only)	10'	12'	5' 0"	19' 8"	13' 10"	19' 4"

*Based on climber's feet positioned at least 3' below highest hand grip

Alt - Alternate configurations will have the top row of handholds plugged for non-climbing terrain to meet pool depth requirements. **Important Safety Note:** AquaClimb safety distances and pool depths are based upon a climber entering the water feet first. The AquaClimb was designed for a feet first entry at all times and supervision must be present when the AquaClimb is in use. To ensure the maximum level of safety, there must be no diving at any time.



POOLSIDE ADVENTURES® CLIMBING WALLS

Elevate your poolside experience with the AquaClimb Luxe, our premium climbing wall that combines innovation, adventure, and sophistication. Each Luxe model is expertly tailored to complement your unique pool design and aesthetic preferences. Engineered for versatility, the Luxe can be mounted to a concrete pool wall or deck, offering seamless, turn-key solutions from concept to installation. Add a touch of bespoke luxury and adventurous elegance to your pool with AquaClimb Luxe.

Pricing varies by panel height and width. Luxe starting at \$30,000 USD.

AquaClimb Luxe Pool Climbing walls are designed to build courageous kids for life's great adventure. Contact us today to discuss your project and receive detailed pricing.

- Full modular system
- Three height options, two panel widths and unlimited panel sections.
- One standard design that fits all climbing surface panel options
- 304L stainless steel with epoxy coating for wipe clean surfaces
- Design load testing to withstand 100 MPH wind loads
- Weight limit 300 pounds per each vertical section



AquaClimb® Climbing Walls

Product

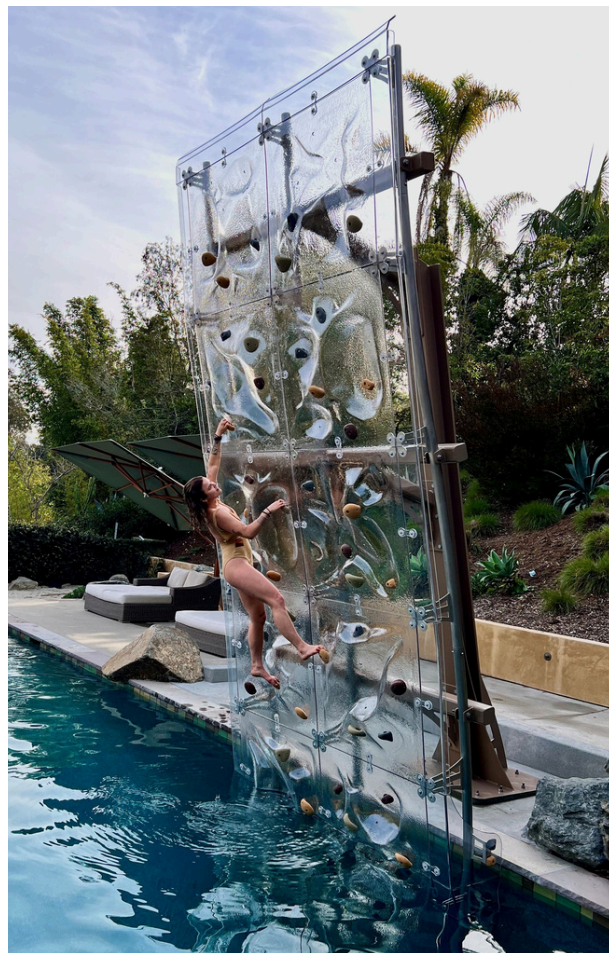
AquaClimb® Luxe

AQUACLIMB® Depth Requirements

Panel Options	A Minimum Pool Depth	B Drop Zone	C Plummet line from wall	D Available climbing height	E Height of top foothold*	F Above deck wall height
3 High Alt	5'	9'	1'8"	8'10"	3'1"	9'8"
3 High	6'	9'	1'8"	9'10"	3'11"	9'8"
4 High Alt	6'	10'	2'10"	12'1"	6'3"	12'11"
4 High	7'	10'	2'10"	13'1"	7'1"	12'11"
5 High Alt	8'	12'	3'3"	15'5"	9'6"	16'1"
5 High	9'	12'	3'3"	16'5"	10'4"	16'1"
6 High (Kurve Only)	10'	12'	5'0"	19'8"	13'10"	19'4"

*Based on climber's feet positioned at least 3' below highest hand grip

Alt - Alternate configurations will have the top row of handholds plugged for non-climbing terrain to meet pool depth requirements. **Important Safety Note:** AquaClimb safety distances and pool depths are based upon a climber entering the water **feet first**. The AquaClimb was designed for a feet first entry at all times and supervision must be present when the AquaClimb is in use. To ensure the maximum level of safety, **there must be no diving at any time.**



POOLSIDE ADVENTURES® CLIMBING WALLS

Join thousands of facilities across the country that have transformed their pools with AquaClimb® Climbing Walls, the most budget-friendly way to add a climbing feature to your aquatic space. Designed to attract attention and keep guests coming back, AquaClimb delivers an exciting vertical challenge that appeals to all ages and ability levels. From helping kids build confidence to offering a fun, full-body workout for adults, these flat-panel climbing walls expand pool programming with a low-maintenance attraction that delivers big impact, strong value, and an undeniable wow factor.

Offering fully custom powder-coating, handholds, and custom logo or graphic placement to help reinforce your brand and facility theming.

Climbing panels can be configured in a range of heights and widths to best suit your pool layout and budget.



MODULAR AND CUSTOMIZABLE

AquaClimb's height, width, and panel style can all be tailored to fit the size and design of your pool, with options for adding more panels at a later phase as your budget allows.



CHALLENGING, REALISTIC CLIMBING

With 3D contoured panels, AquaClimb delivers a realistic rock-climbing experience that engages adolescents through adults to conquer the climb in different ways.



TOP SAFETY RECORD

With best-in-class safety features to ensure climbers fall away from the wall, AquaClimb also has a proven performance history from 1,000 installations across the globe.



ACTIVATES THE DEEP END

As a safer alternative or enhancement to diving boards, AquaClimb attracts tweens and teens to those under-utilized, deep areas of a pool.



EASY TO INSTALL

Because AquaClimb is pre-assembled in the factory, no specialized skills or equipment are required for onsite installation at your facility on any pool gutter configuration.



MINIMAL FOOTPRINT

AquaClimb's small deck-mounted system saves clearance space and doesn't interfere with normal lap swimming. And with no water source required, it is an easy amenity to add.

"Our AquaClimb is spectacular. From the time we open the pool until the time we close, there is a line to make the climb. What an ingenious product and so much fun for the kids... and a few adults."

Mark Tiernan

General Manager at the Valley Country Club Centennial, CO

"We had a great first year with the AquaClimb. Kids were constantly lined up for it, and everyone had a blast. AquaClimb was a big reason we saw a 40% increase in attendance over the last year."

Ted Davis

Southfield Parks and Recreation Southfield, MI

POOLSIDE ADVENTURES AQUAZIP'N®

The AquaZip'N® is an exhilarating poolside attraction, combining the thrill of an adventure zipline with rope swinging. Participants of every age launch into the pool with a big splash! The design of the AquaZip'N® allows for clean entry into the water and eliminates swing back through its arching frame. AquaZip'N® has a proprietary self-retracting trolley making it easy to operate and allowing for high-throughput. No water source is needed and makes it an easy addition to install on the pool deck.

Ask us about the new, incredibly innovative, Patent Pending V3 AquaZip'N®! Designed to build courageous kids for life's great adventure. Contact us today to discuss your project and receive detailed pricing.

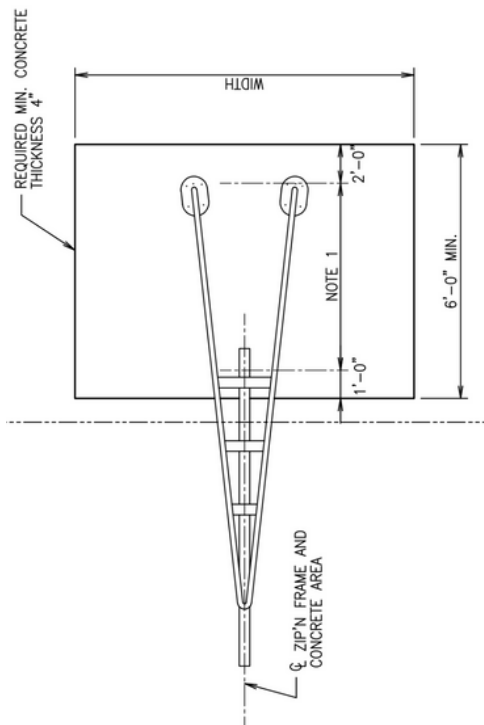
- Full modular system
- Three height options, two panel widths and unlimited panel sections.
- One standard design that fits all climbing surface panel options
- 304L stainless steel with epoxy coating for wipe clean surfaces
- Design load testing to withstand 100 MPH wind loads
- Weight limit 300 pounds per each vertical section



AquaZip'N®

Product

AquaZip'N®



POOLSIDE ADVENTURES AQUANINJA FLX[®]

AquaNinja[®] FLX - poolside obstacle course to unleash your inner ninja warrior. New patent pending design.

The AquaNinja FLX takes all of the excitement of a traditional Ninja Warrior course and brings it to your pool facility! With obstacles suspended at the water line and high above it, the AquaNinja FLX levels the playing field for kids, teens, and adults alike, creating a unique aquatic challenge like no other.

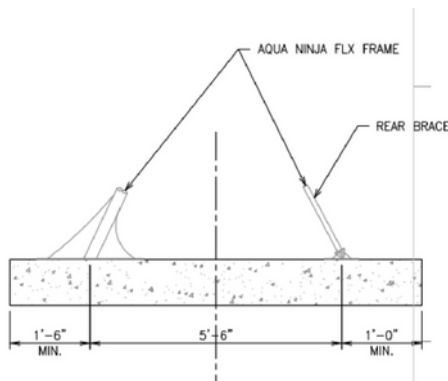
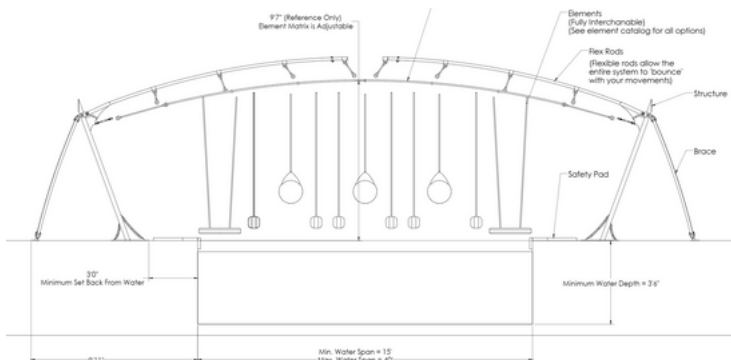


- Full modular system
- Three height options, two panel widths and unlimited panel sections.
- One standard design that fits all climbing surface panel options
- 304L stainless steel with epoxy coating for wipe clean surfaces
- Design load testing to withstand 100 MPH wind loads
- Weight limit 300 pounds per each vertical section

AquaNinja[®] FLX

Product

AquaNinja[®] FLX



POOLSIDE ADVENTURES® PART NUMBERS



Flat Panel Walls

part

203700-1	KRYSTAL Clear 3H 1W
203700-1B	KRYSTAL Blue 3H 1W
2210999	Challenger Clear 2H 1W
2210999-B	Challenger Blue 2H 1W
203700-2	KRYSTAL Clear 3H 2W
203700-2B	KRYSTAL Blue 3H 2W
203700-3	KRYSTAL Clear 3H 3W
203700-3B	KRYSTAL Blue 3H 3W
203700-4	KRYSTAL Clear 3H 4W
203700-4B	KRYSTAL Blue 3H 4W
203702-1	KRYSTAL Clear 4H 1W
203702-1B	KRYSTAL Blue 4H 1W
2210888	Challenger Clear 3H 1W
2210888-B	Challenger Blue 3H 1W
203702-2	KRYSTAL Clear 4H 2W
203702-2B	KRYSTAL Blue 4H 2W
203702-3	KRYSTAL Clear 4H 3W
203702-3B	KRYSTAL Blue 4H 3W
203702-4	KRYSTAL Clear 4H 4W
203702-4B	KRYSTAL Blue 4H 4W
203703-1	KRYSTAL Clear 5H 1W
203703-1B	KRYSTAL Blue 5H 1W
2210777	Challenger Clear 4H 1W
2210777-B	Challenger Blue 4H 1W
203703-2	KRYSTAL Clear 5H 2W
203703-2B	KRYSTAL Blue 5H 2W
203703-3	KRYSTAL Clear 5H 3W
203703-3B	KRYSTAL Blue 5H 3W
203703-4	KRYSTAL Clear 5H 4W
203703-4B	KRYSTAL Blue 5H 4W

3-D Walls

part

203704-1	GLACIER 3H 1W
203707-1	ICE 3H 1W
2210999-C-B	Challenger Contour 2H 1W
203704-2	GLACIER 3H 2W
203707-2	ICE 3H 2W
203704-3	GLACIER 3H 3W
203707-3	ICE 3H 3W
203704-4	GLACIER 3H 4W
203707-4	ICE 3H 4W
203705-1	GLACIER 4H 1W
203708-1	ICE 4H 1W
2210888-C-B	Challenger Contour 3H 1W
203705-2	GLACIER 4H 2W
203708-2	ICE 4H 2W
203705-3	GLACIER 4H 3W
203708-3	ICE 4H 3W
203705-4	GLACIER 4H 4W
203708-4	ICE 4H 4W
203706-1	GLACIER 5H 1W
203709-1	ICE 5H 1W
2210777-C-B	Challenger Contour 4H 1W
203706-2	GLACIER 5H 2W
203709-2	ICE 5H 2W
203706-3	GLACIER 5H 3W
203709-3	ICE 5H 3W
203706-4	GLACIER 5H 4W
203709-4	ICE 5H 4W

Luxe Walls

part

203710-1	LUXE 4H 1W
203710-2	LUXE 4H 2W
203710-3	LUXE 4H 3W
203711-1	LUXE 5H 1W
203711-2	LUXE 5H 2W
203711-3	LUXE 5H 3W
203712-1	LUXE 6H 1W
203712-2	LUXE 6H 2W
203712-3	LUXE 6H 3W

Zip'N

part

203713	AquaZip'N
--------	-----------

Ninja FLX

part

213981-20	AquaNinja-FLX 20'
213981-25	AquaNinja-FLX 25'
213981-30	AquaNinja-FLX 30'
213981-35	AquaNinja-FLX 35'
213981-40	AquaNinja-FLX 40'
213981-45	AquaNinja-FLX 45'

KERSPLASH® CLIMBING WALLS

KERSPLASH® pool climbing walls add adventure to pool decks in both indoor and outdoor applications. Available in 2, 3, and 4 panel heights, they are modular to fit any space and deck configuration. The KERSPLASH® pool climbing wall is constructed of a 100% stainless steel frame and UV and chlorine resistant panels. The see-through panels eliminate any visual barrier on the deck and hold an attractive visual appeal and fun to any aquatic setting.

- Designed to last in harsh indoor and outdoor aquatic settings
- All stainless steel is passivated and coated with SPECTRA-SHIELD® to resist corrosion
- Frame is constructed of 100% USA made stainless steel
- Each 4' x 4' section comes in a sturdy single frame with solid one piece construction
- Easy installation

CHECK
IT OUT
↓



KERSPLASH® Climbing Walls

Product	Part #
8' KERSPLASH® Climbing Wall	70535-1W
12' KERSPLASH® Climbing Wall	70536-1W
16' KERSPLASH® Climbing Wall	70537-1W

Height	Description	Part Number
8'	2 clear panels	70535
8'	2 blue panels	70535-1WB
8'	2 green panels	70535-1WG
8'	2 alternating panels - blue/green	70535-1WA
12'	3 clear panels	70536
12'	3 clear panels with removable base	160552
12'	3 blue panels	70536-1WB
12'	3 green panels	70536-1WG
12'	3 alternating panels - blue/green	70536-1WA
16'	4 clear panels	70537
16'	4 blue panels	70537-1WB
16'	4 green panels	70537-1WG
16'	4 alternating panels - blue/green	70537-1WA

Requirements:

- 35" of deck space
- 4' of clearance behind the wall for a walkway
- 5" to either side of the wall
- 10' drop zone
- Pool depth determines the allowable climbing height



POOLSIDE SLIDES

Turn your pool deck into the ultimate splash zone with Spectrum Aquatics' commercial-grade poolside slides, built for durability, designed for thrills, and perfect for all ages!

Choose from a vibrant mix of colors and configurations to match any facility environment.

Engineered with slip-resistant steps and decking, plus smooth twists, swoops, and turns, our slides deliver maximum fun with uncompromising safety. Bright, bold, and built to last, Spectrum Slides bring new life to your aquatic space and keep guests coming back for more.

- Powder-coated steel frame
- Custom colors are available to match any pool environment
- Non-slip surface on steps and deck
- Bell and socket flumes - no leaks
- Modular to fit all deck configurations
- Buildable for future flume additions
- Available in several flume and design options

CHECK IT OUT



Spectrum Poolside Slides

Product	Part #
Single Flume 360 Triangle Deck	1810371
Single Flume 90 Triangle Deck	1810547
Double Flume 90/90 Half Hex Deck	1810555
Double Flume 90/360 Half Hex Deck	1810549
Double Flume 90/360 Triangle Deck	1810548
Double Flume 360/360 Half Hex Deck	1810373
Double Flume 180/540 Dual Triangle Deck	1810557
Quad Flume 90/360 Half Hex Deck	1810552
Quad Flume Supreme Half Hex Deck	1810556
Palm Toppers	Upon Request



Standard Color Options:



SLIDEWORX SERIES

Make a splash with high-quality, commercial-grade poolside slides designed for fun at every age!

Spectrum Aquatics' SlideWorx™ series poolside slides, powered by AquaWorx, are available in a wide range of configurations and vibrant color options to complement any aquatic environment. Engineered with safety and rider experience as top priorities, each slide delivers dependable performance, secure access, and engaging ride paths that keep guests coming back for more.

- Galvanized steel or powder-coated steel frame
- Custom colors available to match any pool environment
- Fiberglass flumes
- Variable speed pump included
- Average 2- 3 day installation
- With or without a canopy
- Stair placement is customizable
- **Available in several flume sizes and layouts**

CHECK
IT OUT
↓



Spectrum SlideWorx Series

Product	Part #
Single Flume:	
90° Loop - Open Flume, 7' tall	233404
360° Loop - Closed Flume, 7'7" tall	233402
360° Loop - Closed Flume, 8'2" tall	233401
450° Loop - Open Flume, 9'4" tall	233400
Double Flume:	
450° Loop - Open Flume and Straight Closed Flume	233405
Kiddie Slide	233403



Standard Flume Color Options:



POOLSIDE BASKETBALL HOOPS

Spectrum Aquatics' poolside basketball hoops are designed to bring energy, competition, and interactive play to aquatic facilities of every size. From the high-impact Slamma and Jamma! hoops to the family-friendly Jamma Jr! and Jamma Jr! Extended Reach models, as well as Dual Post and Custom 3-Sided configurations, each system is engineered for durability, safety, and long-lasting performance. Built to withstand high traffic and demanding pool environments, Spectrum's basketball hoops encourage participation, increase dwell time, and transform pools into dynamic recreation destinations. With multiple mounting options and custom designs available, these hoops seamlessly integrate into new or existing facilities while delivering reliable, splash-worthy fun.

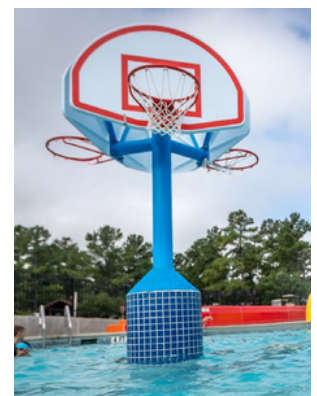
- Commercial-grade construction designed for aquatic environments and frequent use
- Available in multiple styles and configurations to accommodate varying pool layouts and user ages
- Custom powder-coated finishes offered in a wide range of colors to match facility branding or themes
- UV-resistant coatings and materials for long-lasting color and performance
- Secure mounting options for stability, safety, and peace of mind
- Designed to enhance guest engagement, repeat visits, and overall pool appeal

CHECK
IT OUT
↓



Poolside Basketball Hoops

Product	Part #
Slamma!	133058
Jamma!	173420
Jamma Jr!	193400
Jamma Jr! Extended Reach	2010523
Dual Post	57827
Custom 3-Sided Basketball Hoop	Upon Request



ABOUT OUR PARENT COMPANY



Building **communities** through **play** & **recreation**™

PlayCore is a purpose-driven company that develops leading research and a complete portfolio of innovative products, programs, and services to build healthy communities through play and recreation. Learn more at www.playcore.com.

THE PLAYCORE AQUATIC BRANDS

The PlayCore aquatic brands work together as the ultimate resource for creating your entire aquatic experience. We specialize in providing your facility with unparalleled support throughout your entire journey in selecting the right amenities, including architectural and interactive water features, water play, aquatic competition, compliance, safety, adventure play, and ongoing maintenance. Our team of experts is committed to making your dream a reality and will work with you to find exactly what you need (even if it's a custom solution), at a price point that meets your budget requirements. After your installation is complete, we provide ongoing support for the lifetime of your product to ensure you get the most out of your recreational, commercial, municipal, or competitive facility.



fountain people™
A PLAYCORE Company

4600 Hwy 123
San Marcos, TX 78666
512.392.1155
fountainpeople.com



A PLAYCORE Company

7100 Spectrum Lane
Missoula, MT 59808
800.791.8056
spectrumproducts.com



7100 Spectrum Lane
Missoula, MT 59808
800.624.1235
altapoolcovers.com



A PLAYCORE Company

4600 Hwy 123
San Marcos, TX 78666
512.392.1155
waterodyssey.com



A PLAYCORE Company

10601 Oak St NE
St. Petersburg, FL 33716
888.426.8511
aquaworxusa.com



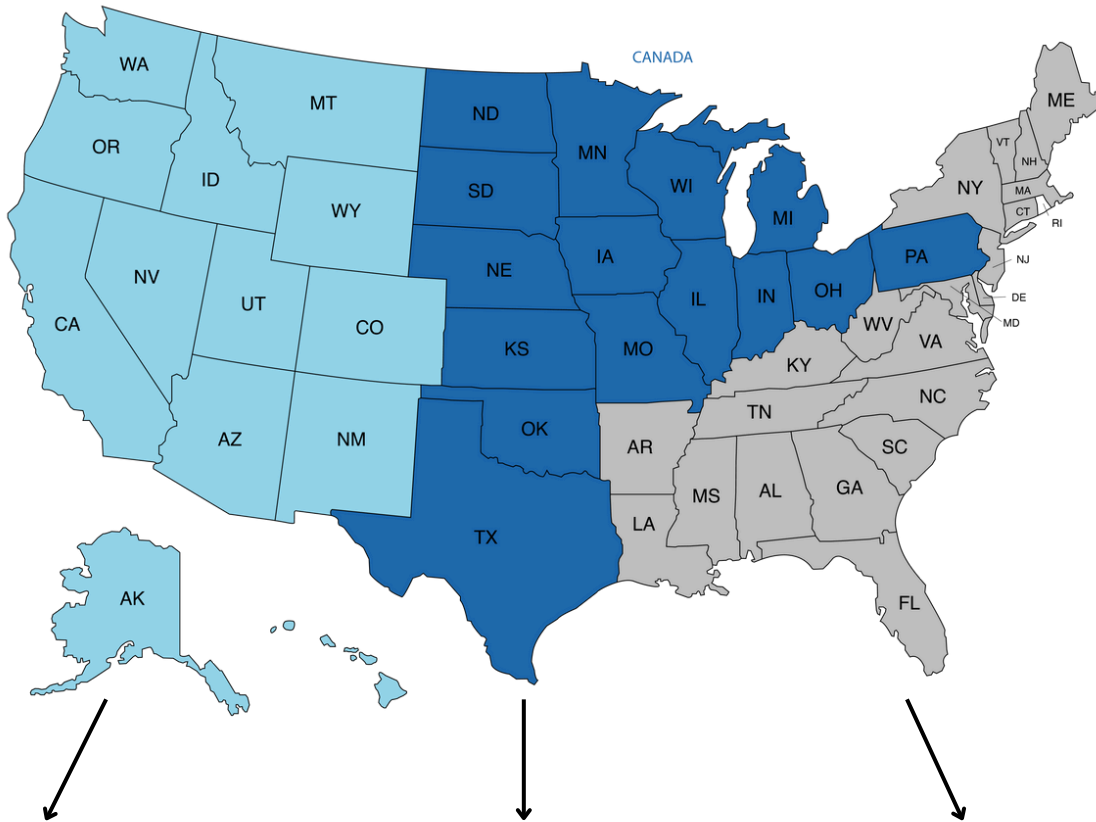
1551 East 11th Street
Loveland, CO 80537
800.279.0111
coloradotime.com



A PLAYCORE Company

800.791.8056 | info@spectrumproducts.com
www.spectrumproducts.com

SALES TEAM



Western Region

Inside Sales Representative

Torie Madgwick:

torie.madgwick@spectrumproducts.com



Midwest/Canada/International

Inside Sales Supervisor

Rachel King:

rachel.king@spectrumproducts.com



Eastern Region

Inside Sales Representative

Shay Stone:

shay.stone@spectrumproducts.com



National Sales Manager

Jake Godinez:

jake.godinez@spectrumproducts.com



Vice President of Sales, Marketing

Nabil Khaled:

nabil.khaled@spectrumproducts.com



Field Sales/Mechanical Engineer

Noah Henderson:

noah.henderson@spectrumproducts.com





MADE IN USA

SPECTRUM
AQUATICS®

A **PLAYCORE** Company

7100 SPECTRUM LANE - MISSOULA MT. - 59808

800.791.8056 | INFO@SPECTRUMPRODUCTS.COM | SPECTRUMPRODUCTS.COM