



SLIDEWORX SERIES SLIDES

ABOUT US

Since 1972, Spectrum Aquatics® has designed and manufactured high-quality custom rails, ADA lifts and commercial grade pool deck equipment. We are pleased to introduce an entirely new line of products to create the ultimate Aquatic Adventure Zone™ at your facility, including: poolside slides, climbing walls, zip lines, basketball equipment, and ninja courses. Spectrum has innovative products, skilled employees, knowledgeable engineers and an excellent customer service and sales staff.

Spectrum Aquatics® provides exceptional support to customers. We take pride in offering you top notch service and assisting you in finding the best solutions to meet your individual requirements. Spectrum Aquatics® strives to consistently exceed expectations and be your total solution provider. From inquiry to installation, Spectrum Aquatics® is here for you and the aquatics community.

Spectrum is highly regarded within the pool and spa industry and is acknowledged for:

- Quality products with competitive pricing
- Expedient delivery
- Leadership in innovative products
- Friendly and caring customer service
- Superior engineering and field sales support

Contact Us:

Sales

Direct: (800) 791-8056

Email: info@spectrumproducts.com

Parts and Warranty

Direct: (406) 532-6321

Email: service@spectrumproducts.com

PHONE 800.791.8056 | FAX 800.791.8057 | 7100 SPECTRUM LANE, MISSOULA, MONTANA 59808

TO ORDER THE SPECTRUM AQUATICS® PRODUCTS IN THIS CATALOG, PLEASE CONTACT YOUR LOCAL REPRESENTATIVE OR VISIT OUR WEBSITE AT: WWW.SPECTRUMPRODUCTS.COM

Note: Product descriptions may vary

ANTIWAVE is a registered trademark of Anti Wave International Pty Ltd., used with its permission

Duraflex is a registered trademark of Duraflex International Corp., used with its permission

Harmsco is a registered trademark of Harmsco, Inc., used with its permission

Sta-Rite is a registered trademark of Sta-Rite Pool, LLC, used with its permission

Kersplash, Motion Trek, SPECTRA-SHIELD, Spectrum Aquatics, Spectrum, and Xcellerator are registered trademarks of Everlast Climbing Industries Inc., used with its permission.

SLIDEWORX SERIES SLIDES

Make a splash with high quality, commercial grade poolside slides - fun for all ages! Spectrum Aquatics' SlideWorx series poolside slides, powered by AquaWorx are available in a wide array of configurations and colors. Safety and rider experience are our top priority.

Features & Benefits:

- Galvanized steel or powder-coated steel frame
- Custom colors available to match any pool environment
- Fiberglass flumes
- Meets or exceeds ASTM slope velocity standards
- 400 gpm variable flow
- Variable speed pump included
- Average 2- 3 day installation



Flume Color Options:



SCAN TO SEE ALL
OUR SLIDEWORX
SLIDES AT
SPECTRUMPRODUCTS.COM

SLIDEWORX SERIES - DRAWINGS

SINGLE 450 OPEN FLUME, 9'4" PART# 233400



Single-rider enclosed flume slide is perfect for thrill seekers of all ages. Designed with adults and teens in mind, it makes a great addition to any pool.

Features:

- Elevation: 9' 4"
- Linear footage: 67' 6"
- 300 lb weight limit
- 48" height requirement

REVISION NUMBER	ISS DATE	REVISION DESCRIPTION	BY
1			C.P.S.

AQUAWORX
USA
10801 OAK STREET N.E.
ST. PETERSBURG, FL 33716
(888) 426-8511

OPEN FLUME WATER SLIDE (OPTION #1)
U.S.A.
S.N. AW5LS - 1
400 GPM
APPROX. 67'-6" LONG, PLATFORM HEIGHT 9'-4"

ENGINEER OF RECORD

SLIDEWORX SERIES - DRAWINGS

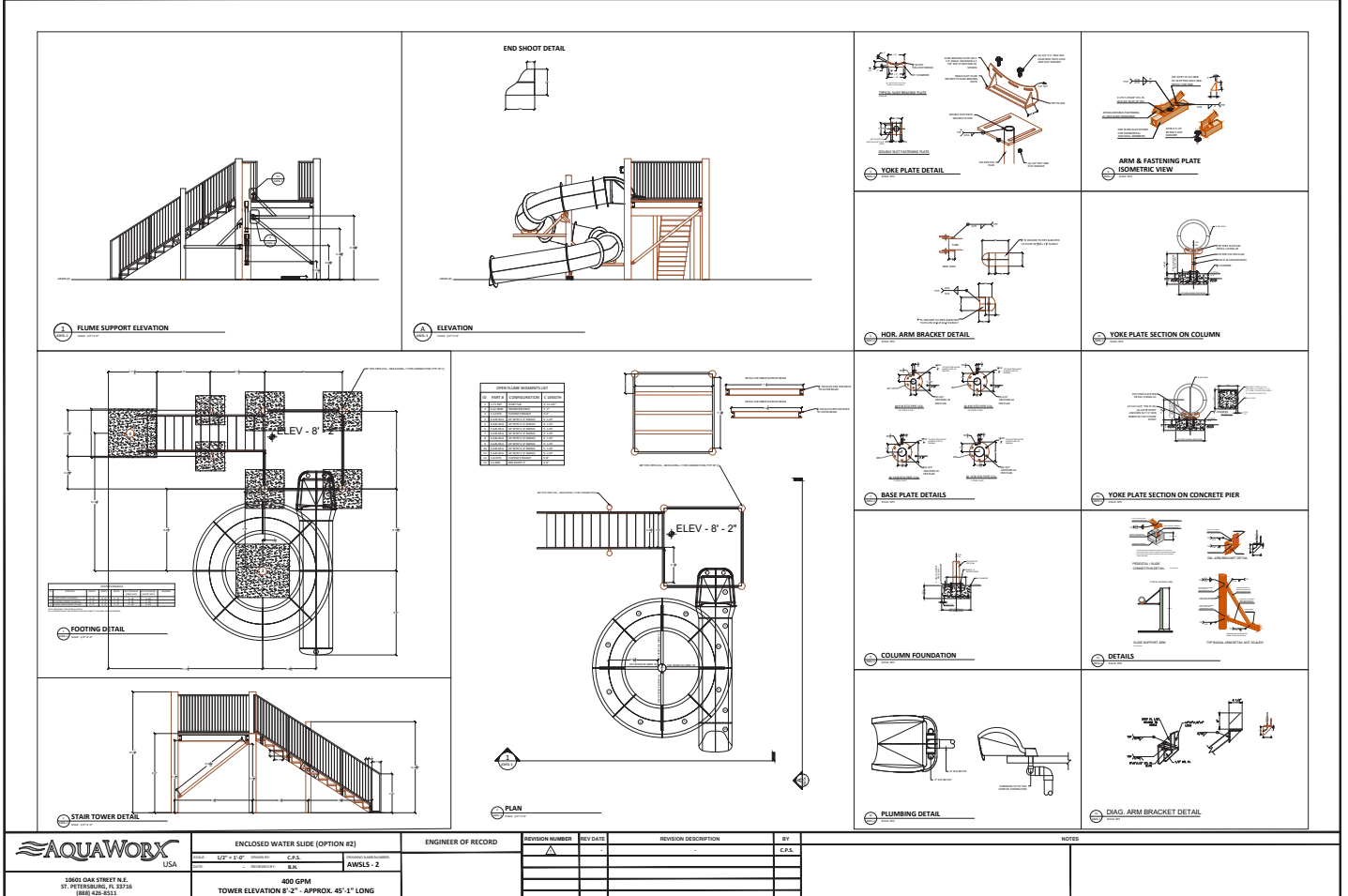
SINGLE 360 CLOSED FLUME, 8'2" PART# 233401



Single-rider enclosed flume slide is perfect for thrill seekers of all ages. Designed with adults and teens in mind, it makes a great addition to any pool.

Features:

- Elevation: 8' 2"
- Linear footage: 45' 1"
- 300 lb weight limit
- 48" height requirement



800.791.8056

SLIDEWORX SERIES - DRAWINGS

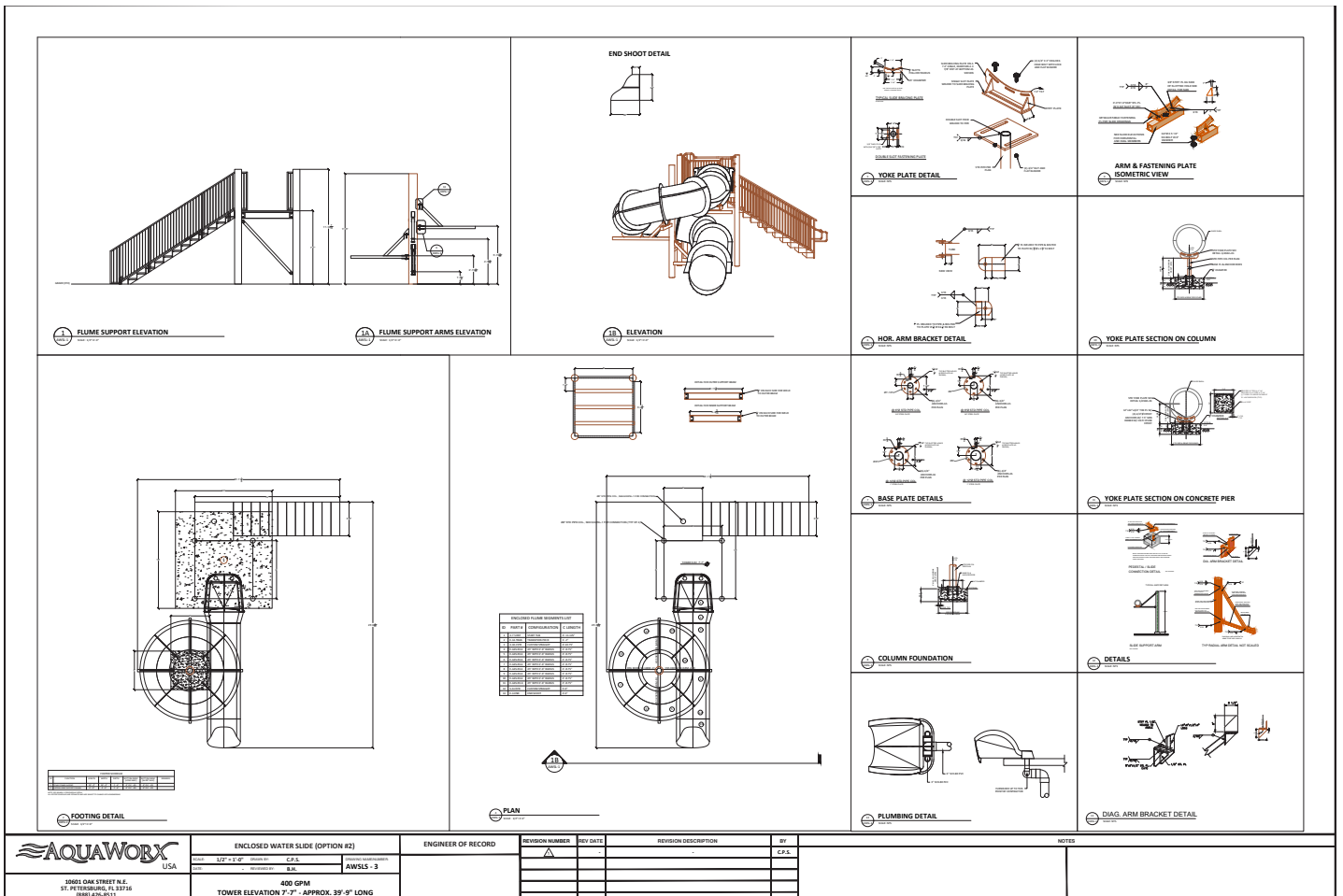
SINGLE 360 CLOSED FLUME, 7'7" PART# 233402



Single-rider enclosed flume slide is perfect for thrill seekers of all ages. Designed with adults and teens in mind, it makes a great addition to any pool.

Features:

- Elevation: 7' 7"
- Linear footage: 39' 9"
- 300 lb weight limit
- 48" height requirement



SLIDEWORX SERIES - DRAWINGS

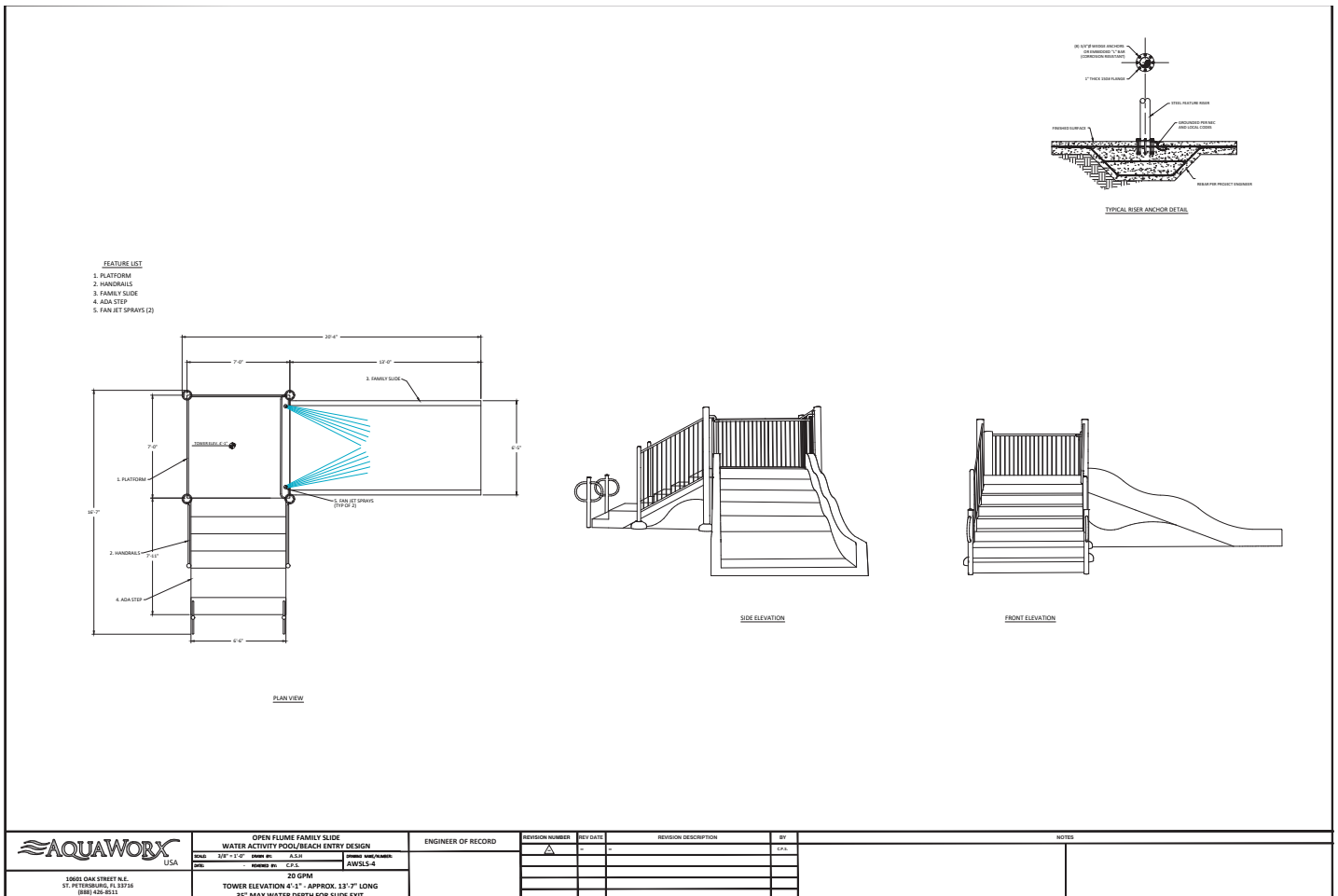
KIDDIE SLIDE PAR# 233403



Ideal for toddlers and younger children, the unique design makes for a less intimidating slide experience with bumps that help reduce accelerating speeds. This slide is intended for installation in the shallow waters of zero-entry and kiddie pools.

Features:

- Elevation: 4' 1"
- Linear footage: 13' 7"
- 300 lb weight limit



800.791.8056

SLIDEWORX SERIES - DRAWINGS

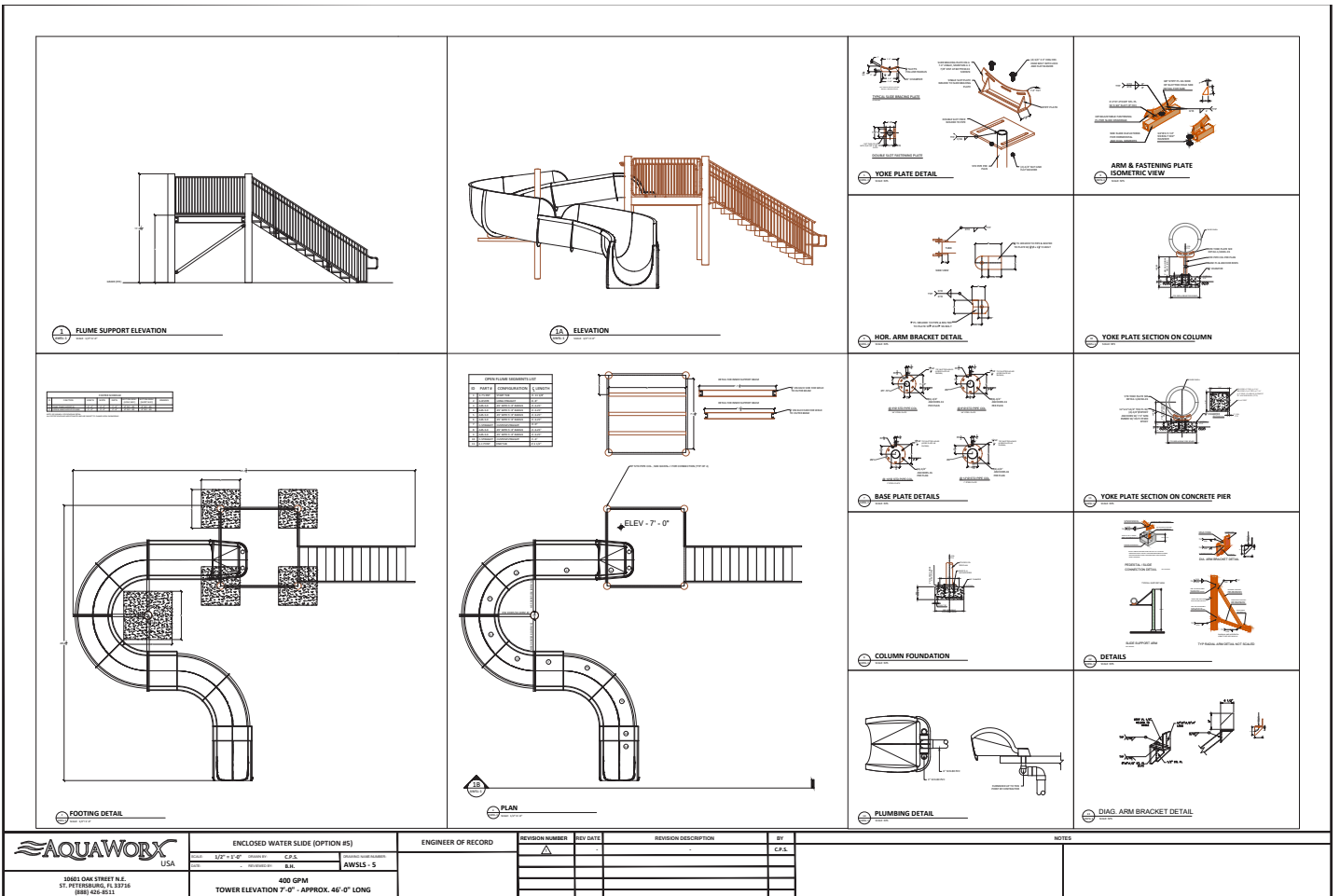
SINGLE 90 OPEN FLUME, 7' PART# 233404



The lower elevation of this slide makes it less intimidating for younger guests who want to experience the thrill of an open flume slide.

Features:

- Elevation: 7' 0"
- Linear footage: 46' 0"
- 300 lb weight limit



SLIDEWORX SERIES - DRAWINGS

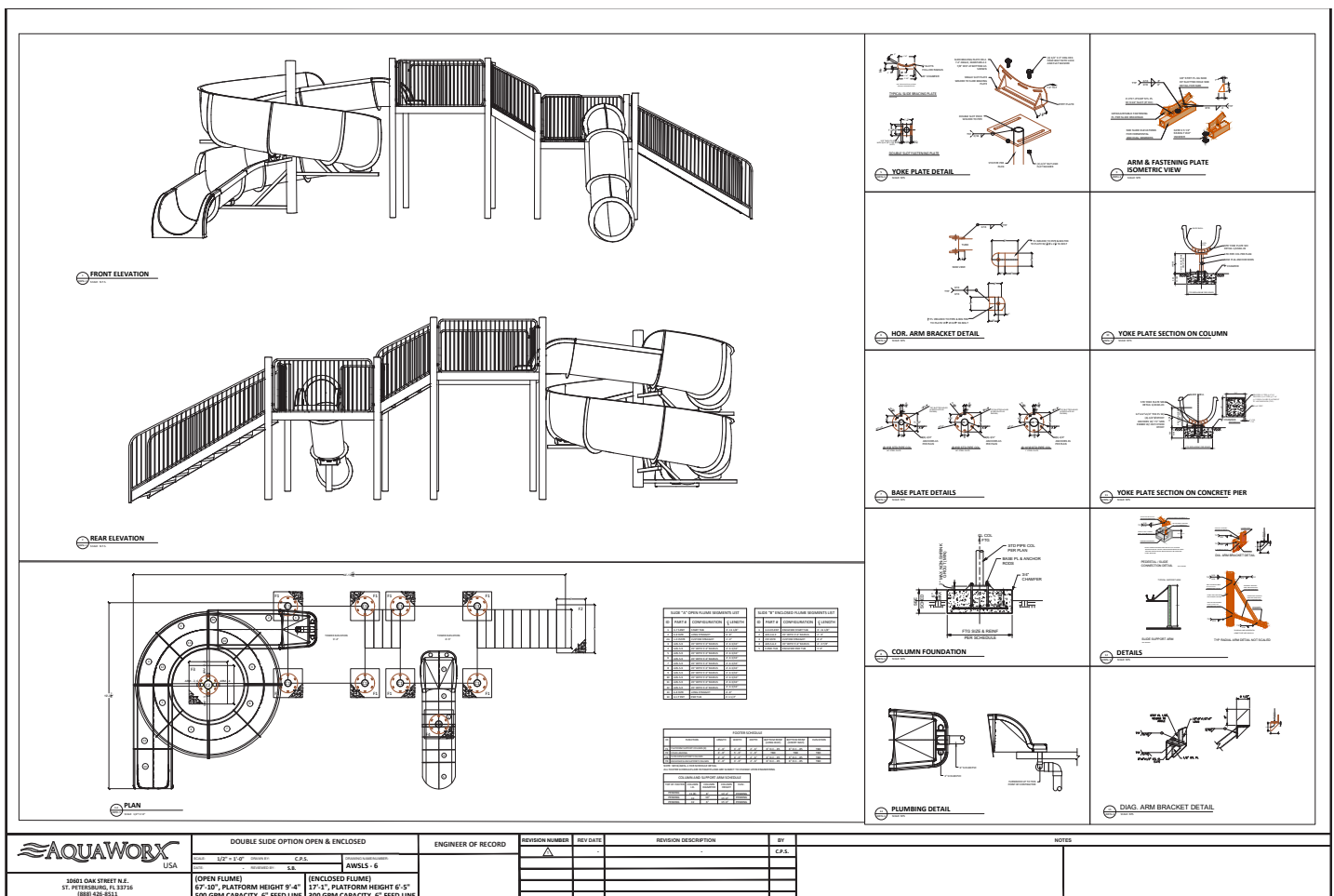
DOUBLE FLUME 450 OPEN STR CLOSED PART# 233405



Double the fun and combine open and closed flume slides on one single structure. Separate platforms for each slide allow operations to run smoothly when wait lines inevitably begin.

Features:

- Open flume elevation: 9' 4"
- Closed flume elevation: 6' 5"
- Open flume linear footage: 67' 10"
- Closed flume linear footage: 17' 1"
- 300 lb weight limit
- 48" height requirement



800.791.8056

Daily Poolside Slide Inspection Checklist



Inspection Information

Facility Name

Inspection by

Date

-
- Inspect slide path to make sure there are no obstructions.
 - Look for chips, bubbles, or cracks in the gel coat.
 - Ensure no leaking joints.
 - Check for caulk that has peeled or worn away.
 - Tighten any loose fasteners and replace any that are missing.
 - Check for any excessive or abnormal movement of structural parts.
 - Check that the water flow amount to the slide is in range.
 - Visual Inspection of stairs and slide structure.
 - Make sure signage is placed correctly.

If any of these items are noticed, they must be corrected and repaired before the poolside slide can be opened for use to ensure guest safety.

For detailed information on poolside slide maintenance and cleaning please contact our service department at 800-791-8056.

ABOUT OUR PARENT COMPANY

PlayCore is a purpose-driven company that develops leading research and a complete portfolio of innovative products, programs, and services to build healthy communities through play and recreation. Learn more at www.playcore.com.



THE PLAYCORE AQUATICS GROUP

The PlayCore Aquatics Group is the ultimate resource for creating all of your aquatic experiences. We specialize in providing your facility with unparalleled support throughout your entire journey in selecting the right amenities for your facility including architectural and interactive water features, water play, aquatic competition, compliance, safety, adventure play, and ongoing maintenance. Our team of experts is committed to making your dream a reality and will work with you to find exactly what you need (even if it's a custom solution), at a price point that meets your budget requirements. After the completion of your installation, we provide ongoing support for the lifetime of your product to ensure that you get the most out of your recreational, commercial, municipal, or competitive facility.



fountain people™
A PLAYCORE Company

4600 Hwy 123
San Marcos, TX 78666
512.392.1155
fountainpeople.com



7100 Spectrum Lane
Missoula, MT 59808
800.791.8056
spectrumproducts.com



7100 Spectrum Lane
Missoula, MT 59808
800.624.1235
altapoolcovers.com



WATER ODYSSEY™
BY FOUNTAIN PEOPLE
A PLAYCORE Company

4600 Hwy 123
San Marcos, TX 78666
512.392.1155
waterodyssey.com



10601 Oak St NE
St. Petersburg, FL 33716
888.426.8511
aquaworxusa.com



1551 East 11th Street
Loveland, CO 80537
800.279.0111
coloradotime.com



7100 SPECTRUM LANE – MISSOULA MT. – 59808

800.791.8056 | INFO@SPECTRUMPRODUCTS.COM | SPECTRUMPRODUCTS.COM