



STAINLESS STEEL STARTING BLOCKS

Launching Innovation Since 1972

Spectrum Aquatics offers a range of competitive and non-competitive starting blocks, including single and dual post options, each featuring non-slip surfaces for optimal safety. Our stainless steel block tops are specially coated with a grit overlay to enhance traction.

Our plastic tops are crafted from low-density polyethylene and boast a non-slip surface that exceeds industry standards for those looking for a more flexible option. Perfect for facilities that frequently remove and store platforms, these durable tops can withstand the harshest pool environments, resisting discoloration, fading, and cracking.

- Unlimited color and logo options available on Xcellerator®, Record Breaker and Fusion Starting Platforms
- All starting platforms can be customized to fit existing anchors with our exclusive **Expasion Post Anchoring System**
- Powder coating available in any RAL color and a variety of finishes
- Electropolished and Spectra Shield® coated stainless steel provides high-quality finish that resists corrosion
- Easy to install and remove
- 18" wide competition-width H Style backstroke bar or 18" U-bar on dual post models
- Front hand and toe grips for faster takeoffs
- Easy-to-read lane numbers visible from all four sides
- Anchors and covers sold separately
- Our starting platforms comply with World Aquatics, USA Swimming, NCAA and NFHS regulations (excluding the Quicksilver)



Contact Us:

Sales

Direct: (800) 791-8056

Email: info@spectrumproducts.com

Parts and Warranty

Direct: (406) 532-6321

Email: service@spectrumproducts.com

**Scan to see all Spectrum
Aquatic Starting Blocks**

PHONE 800.791.8056 | FAX 800.791.8057 | 7100 SPECTRUM LANE, MISSOULA, MONTANA 59808

Note: Product descriptions may vary ANTIWAVE is a registered trademark of Anti Wave International Pty Ltd., used with its permission Duraflex is a registered trademark of Duraflex International Corp., used with its permission Harmsco is a registered trademark of Harmsco, Inc., used with its permission Sta-Rite is a registered trademark of Sta-Rite Pool, LLC, used with its permission Kersplash, Motion Trek, SPECTRA-SHIELD, Spectrum Aquatics, Spectrum, and Xcellerator are registered trademarks of Everlast Climbing Industries Inc., used with its permission.

www.spectrumproducts.com



STRENGTH. EXPERIENCE. FORM.

**Built with the same precision and performance that define the best athletes,
because greatness starts at the block.**

Spectrum Aquatics® offers both single and dual post starting platforms, which include incredible non-slip tops and steps. Our stainless steel block tops are coated with a grit overlay providing a level of traction not available in competing products. Our plastic tops are made of low-density polyethylene and contain a non-slip surface that surpasses industry standards. Plastic tops are a great choice for facilities that frequently remove and store platforms, this material is durable and able to withstand harsh pool environments, resisting discoloration, fading, and cracking.

- Unlimited color and logo options available on XCELLERATOR®, Record Breaker and Fusion Starting Platforms
- All starting platforms can be customized to fit virtually any existing anchor
- Powder Coating available in any color and a variety of finishes
- Electropolished and SPECTRA-SHIELD® coated stainless steel provides high-quality finish that resists corrosion
- Easy to install and remove
- 18" wide competition-width H Style backstroke bar or 18" U-bar on dual post models
- Front hand and toe grips for faster takeoffs
- Easy-to-read lane numbers visible from all four sides
- Anchors and covers sold separately
- Our starting platforms comply with World Aquatics, USA Swimming, NCAA and NFHS regulations (excluding the Quicksilver)

800.791.8056

STARTING PLATFORM CUSTOMIZATION

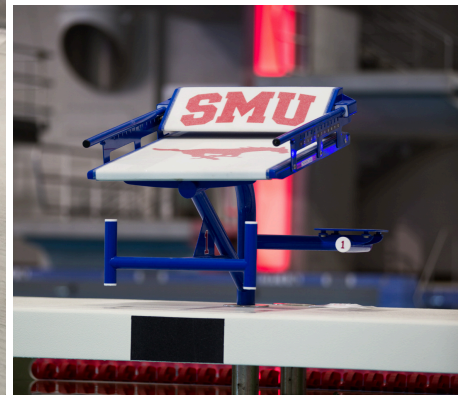
ANCHORS AND BASES

To best suit your needs, we offer a wide variety of custom anchors and bases to fit into any existing anchors or unique pool gutter configurations.



POWDER COATING AND CUSTOM LOGOS

Custom powder coating is available for all Spectrum starting platforms. Custom logos available for Sprint with Rapid Lock Block™ Top, XCELLERATOR®, Record Breaker, and Fusion Starting Platforms.

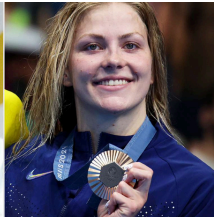
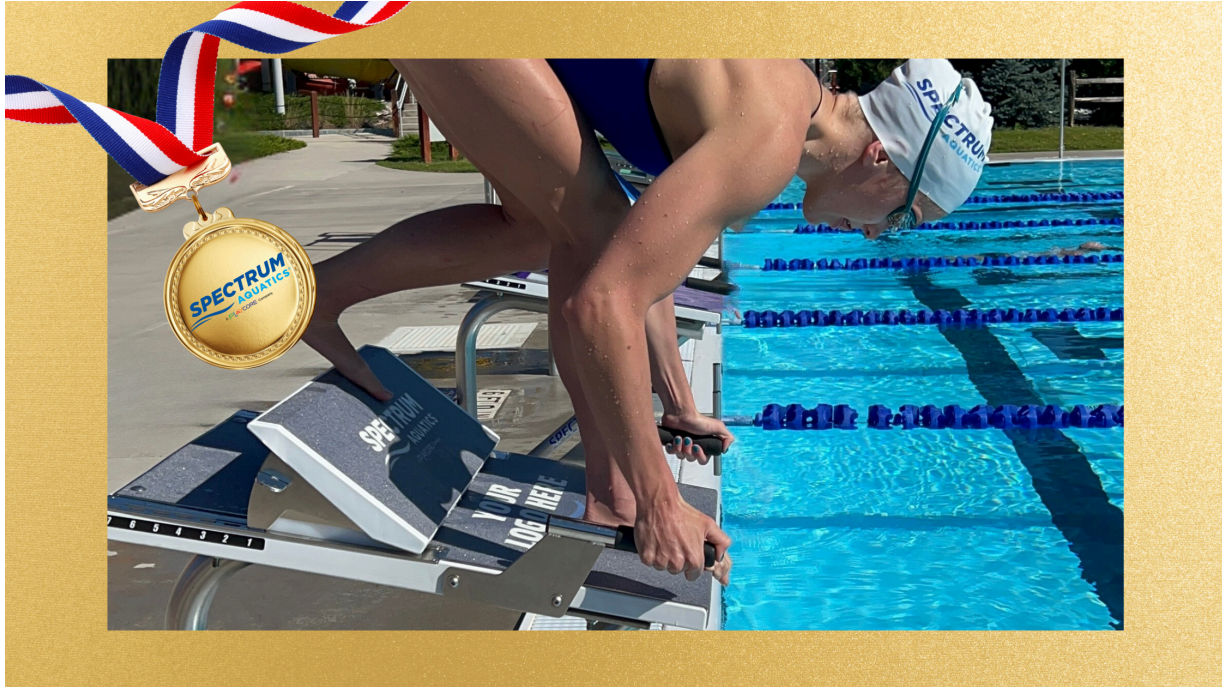


www.spectrumproducts.com

STARTING PLATFORM TOP

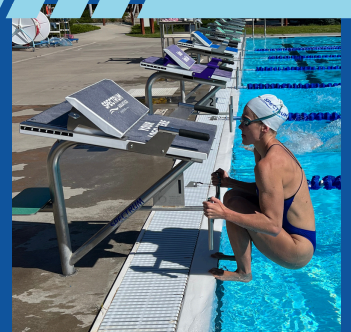
Sprint with Rapid Lock®

Sprint with Rapid Lock™, the ultimate lightweight starting block top that revolutionizes performance. Our advanced wedge locking mechanism delivers an unparalleled and secure method for adjusting the foot wedge, ensuring that you are firmly locked in for powerful starts.



"The sprint rapid lock is a game changer in competitive swimming. The wedge is easy to adjust and lock into place, and with the block's grip, size, and texture combined with its new rapid lock system, it's hard to beat."

Endorsed by Gold Medal Olympian, Katharin Berkoff



800.791.8056

STARTING PLATFORM TOP

Sprint with Rapid Lock®



- Compatible with all Spectrum Aquatics starting blocks and a direct match to the Xcellerator® and Record Breaker.
- The lightweight design ensures the Sprint is easy to install and transport.
- Rapid Lock™ features a user-friendly large paddle lever, facilitating quick and easy foot wedge adjustments.
- Designed to be free of cables and pins!
- Unlock your creativity with our customizations. Enjoy powder coating options and personalization with logo/artwork on block top, wedge, and step.
- Featuring a grit overlay that offers exceptional traction without causing discomfort to the athlete's feet or hands.
- Complies with World Aquatics, USA Swimming, NCAA and NFHS regulations.

Designed to revolutionize competitive swimming while retaining the classic features Spectrum Aquatic Starting Blocks are celebrated for.

- Remarkably lightweight
- Exceptionally easy to use
- Effortless functionality
- Free from cables and pins
- Engineered for durability



Rapid Lock™ is an innovative design that allows for the adjustment of the foot wedge. This mechanism addresses a common failure point by featuring a faster and more convenient paddle-style handle, eliminating the need for cables and pins.

800.791.8056

SINGLE POST STARTING PLATFORMS

XCELLERATOR®


MOST POPULAR



XCELLERATOR® - SINGLE POST



XCELLERATOR® - SINGLE SQUARE POST

Applying the latest in approved technology, this starting platform gives swimmers an extra boost on starts by allowing the rear leg to start at a 90 degree angle and the swimmer's center of gravity to move forward when using the side rails.

- Large 24" x 32" stainless steel top sloped at a 10° angle for optimal starting stances
- Extra large 8" x 16" step for easy mount
- Easy-to-adjust track start footrest with 11 location setting options to accommodate all heights and levels of flexibility
- Uses single post anchor with patented anti-wobble design allowing for easy removal
- Side handles included to enhance speed and faster takeoffs
- Backstroke handles with versatile 18" H-bar
- Suggested setback of 30" – accommodates anchor setbacks of 18" to 36"
- Standard surface color is black or white, with custom colors, powder coat, and logo options available
- (logos can be placed on platform top, wedge and/or step)

57282 - XCELLERATOR® SINGLE POST

FUSION

- Built-in Colorado Time Systems® Relay Judging Platform (RJP) to calculate reaction time and relay exchanges
 - Speedlights across the front of the RJP and step-side flash simultaneously with starting system horn and strobe light
 - Lights provide an additional signal to athletes who are deaf or hard of hearing
 - Easy, out-of-the-way plug-ins for RJP touchpad, speedlights, lane speaker and back-up buttons
- Uses single post anchor with patented anti-wobble, design allowing for easy removal
- 24" x 32" non-slip surface platform top for extra-fast starts
- Includes practice top so the RJP can be stored away from the pool when not in use
- Side handles to enhance speed and faster takeoffs
- Backstroke handles with versatile 18" H-bar
- Suggested setback of 30" – accommodates anchor setbacks of 18" to 36"
- Available in gray, with custom colors and logo options available



FUSION - SINGLE POST

SINGLE POST STARTING PLATFORMS

RECORD BREAKER



RECORD BREAKER - SINGLE POST



RECORD BREAKER - SINGLE SQUARE POST

- Large 24" x 32" stainless steel top sloped at a 10° angle for optimal starting stances
- Extra large 8" x 16" step for easy mount
- Easily upgradeable to XCELLERATOR® with addition of side handles & track start footrest
- Uses single post anchor with patented anti-wobble design allowing for easy removal
- Non-slip access step, available on side or rear
- Large side step accommodates anchor setbacks of 18" to 36"
- Rear step accommodates anchor setbacks of 30" to 36"
- Backstroke handles with versatile 18" H-bar
- Standard surface color is black or white, with custom colors, powder coat, and logo options available

57283 - RECORD BREAKER - SINGLE POST

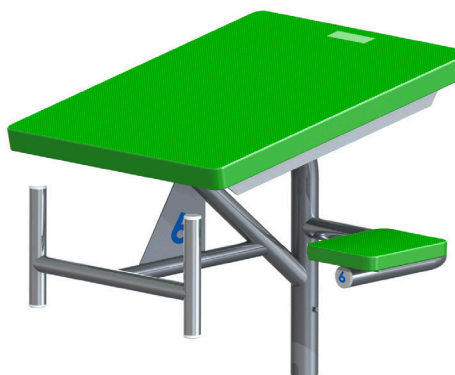
GROWLER

The Growler is great for all levels of competition and features the largest top in the industry.

- Large 25" x 32" single piece LDPE platform with molded-in, non-slip surface; no exposed bolts or hardware
- Front hand and toe grip for faster takeoffs
- 8" x 10" access step with molded-in, non-slip surface. Available on side or rear
- Accommodates anchor setbacks of 18" to 36"
- Side step accommodates anchor setbacks of 18" to 36"
- Rear step accommodates anchor setbacks of 30" to 36"
- Backstroke handles with versatile 18" H-bar

21653 - GROWLER - SIDE STEP

21657 - GROWLER - REAR STEP



800.791.8056

SINGLE POST STARTING PLATFORMS

GRIZZLY

Another one of Spectrum's popular starting platforms. Great for all levels of competition.

- 23" x 25" single piece LDPE platform with molded-in, non-slip surface; no exposed bolts or hardware
- Front hand and toe grip for faster takeoffs
- 8" x 10" LDPE side or rear access step with molded-in, non-slip surface
- Accommodates anchor setbacks of 18" to 30"
- Side step accommodates anchor setbacks of 18" to 30"
- Rear step accommodates anchor setbacks of 24" to 30"
- Backstroke handles with versatile 18" H-bar

21654 - GRIZZLY - SIDE STEP

21655 - GRIZZLY - REAR STEP



QUICKSILVER

Ideal for beginners and pools with large water drafts.

- 23" x 25" LDPE platform with molded-in, non-slip surface; no exposed bolts or hardware
- Front hand and toe grip for faster takeoffs
- Horizontal backstroke bar
- Stainless steel construction
- Suggested setback of 20" – accommodates setbacks of 12" to 24"
- Does NOT meet World Aquatics, USA Swimming, NCAA or NFHS regulations

57289 - QUICKSILVER SINGLE POST



Available in five colors:

LDPE Standard Top Colors



Starting Blocks



TO ORDER THE SPECTRUM AQUATICS® PRODUCTS IN THIS CATALOG, PLEASE CONTACT YOUR LOCAL REPRESENTATIVE AT THE PHONE NUMBER BELOW OR VISIT OUR WEBSITE AT: WWW.SPECTRUMPRODUCTS.COM

www.spectrumproducts.com

The Expansion Post Anchor is the perfect solution for updating your starting platforms without the hassle of construction.

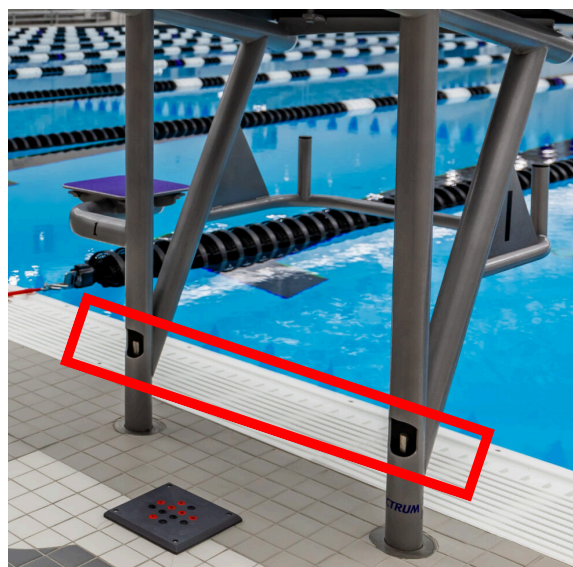
Designed to fit most existing pre-drilled post holes, it provides an easy and quick way to enhance the functionality of your swimming pool and upgrade the performance of your athletes.



EXPANSION POST ANCHORING SYSTEM

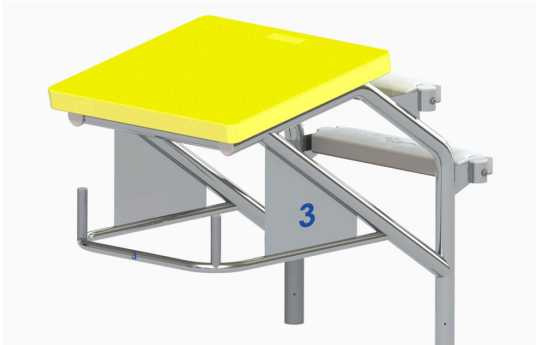
Our patented Expansion Post Anchor fits most existing starting platform pre-drilled post holes, providing an easy and quick solution to updating your swim starting blocks without the hassle of construction. The Expansion Post Anchor utilizes an innovative internal expansion wedge positioned within the starting block post, ensuring equal pressure is applied to every side of the block post for maximum stability.

Spectrum Dual Post Round and Single Post Square Starting Platforms are available with the Expansion Post Anchor.



800.791.8056

DUAL POST STARTING PLATFORMS



BIGHORN

- 23" x 25" non-slip surface with no exposed bolts or hardware
- 20" molded-in, non-slip surface step tread
- Standard Bighorn accommodates anchor setbacks of 20" to 30"
- Long Reach model accommodates an anchor setback up to 40"
- Backstroke handle with versatile 18" U-bar

21095 - BIGHORN

21115 - LONG REACH BIGHORN



COUGAR

- 25" x 32" non-slip surface with no exposed bolts or hardware
- 8" x 10" access step with molded-in, non-slip surface available in side or rear
- Side step accommodates anchor setbacks of 18" to 40"
- Rear step accommodates anchor setbacks of 30" to 40"
- Backstroke handle with versatile 18" U-bar

21135 - COUGAR - SIDE STEP

21145 - COUGAR - REAR STEP



XCELLERATOR®

- Large 24" x 32" stainless steel non-slip top sloped at a 10° angle for optimal starting stances
- Extra large 8" x 16" step for easy mount
- Adjustable track start footrest attachment with 11 locations setting options
- Side handles and 18" backstroke U-Bar included to enhance speed and quick takeoffs
- Non-slip side access step available
- Suggested setback of 30" – accommodates anchor setbacks of 18" to 36"
- Comes standard with a black or white top, custom colors and logo options available

133171 - XCELLERATOR® DUAL POST



RECORD BREAKER

- Large 24" x 32" stainless steel non-slip top sloped at a 10° angle for optimal starting stances
- Extra large 8" x 16" step for easy mount
- Easily upgradeable to XCELLERATOR® with addition of side handles & track start footrest
- Non-slip access step, available on side or rear
- Side step accommodates anchor setbacks of 18" to 36"
- Rear step accommodates anchor setbacks of 30" to 36"
- Backstroke handles with a versatile 18" U-bar
- Comes standard with a black or white top, custom colors, and logo options available

57741 - RECORD BREAKER DUAL POST

STARTING PLATFORM ANCHORS

SINGLE POST ANCHOR

This unique, patented anti-wobble and locator pin design is superior to all other single-set type anchors. There is no equal.



- No tools required when inserting or removing starting platform
- Machined bronze anchor body ensures extremely tight tolerances & offers superior corrosion resistance
- Locating slot design eliminates rotation and guarantees proper alignment of platform
- Includes stainless steel lid and removal tool
- Optional anchor set tool available
- Bulkhead customization available

21705 - ANCHOR SET TOOL

21700 - SINGLE POST ANCHOR

42057 - BULKHEAD ANCHOR

DUAL POST ANCHOR

Designed for use with dual post starting platforms. Fabricated of 304L stainless steel. Welded fixture design allows for easy installation. Anchors are set exactly 20" center to center for ease of platform installation and removal. Anchors provided with bonding lug, caps and removal key.



21705 - ANCHOR SET TOOL

21700 - SINGLE POST ANCHOR

42057 - BULKHEAD ANCHOR

24070 - 6" DEEP DUAL POST ANCHOR SET 24071 - 10" DEEP DUAL POST ANCHOR SET

STARTING PLATFORM TREADS



Note: Product descriptions may vary

ANTIWAVE is a registered trademark of Anti Wave International Pty Ltd., used with its permission

Duraflex is a registered trademark of Duraflex International Corp., used with its permission

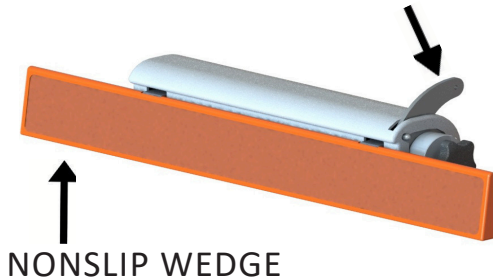
Kersplash, Motion Trek, SPECTRA-SHIELD, Spectrum Aquatics, Spectrum, and Xcellerator are registered trademarks of Everlast Climbing Industries Inc., used with its permission

800.791.8056

BACKSTROKE START DEVICES

Backstroke swimmers routinely risk a slip start when pushing off a pool wall or slippery touchpad. Our backstroke start devices are designed to reduce slipping, and are available in two different models: automatic retraction, and stationary.

AUTOMATIC RETRACTION 143081

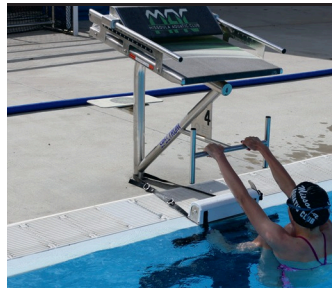


- U.S. Patent No. 10,245,524
- Features a 65cm x 8cm (25.6" x 3.1") nonslip wedge with a 10° angle to secure foot placement along pool wall
- Easily adjustable and locks into place, allowing swimmers to select desired location of the nonslip wedge along the pool wall
- Automatically retracts up and out of the water so as not to interfere with flip turns and touchpad interactions, eliminating the need for manual removal
- Compatible with nearly all block types and pool configurations - it can be strapped around a starting platform for easy set up
- Custom attachment options are also available
- Our sales team can help determine the best mounting option for your pool

HOW IT WORKS:



1. Unlock and pull wedge strip to desired location



2. Place feet on nonslip wedge



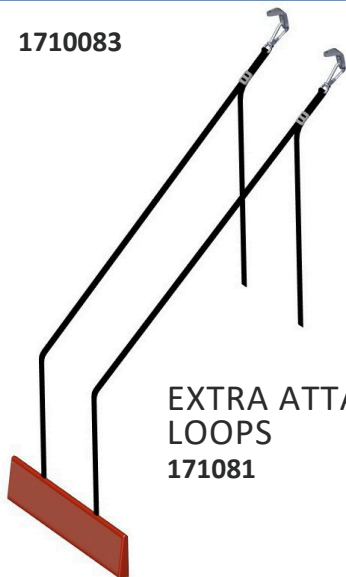
3. Proceed with your backstroke start



4. Wedge automatically retracts out of the water

STATIONARY BACKSTROKE START WEDGE

1710083



The Stationary Backstroke Start Wedge empowers swimmers to refine and perfect their backstroke takeoffs with greater power, precision, and consistency.

- Features a 65cm x 8cm (25.6" x 3.1") nonslip wedge with a 10° angle to secure foot placement along pool wall
- Same non-slip wedge and straps as our top-of-the-line Backstroke Start Device
- Can easily attach to nearly any existing starting block frame Includes stainless steel hardware to resist corrosion
- World Aquatics, USA Swimming and NCAA compliant, when installed correctly

This Stationary Backstroke Start Wedge gives your athletes the edge they need to master powerful, race-ready backstroke starts with precision and confidence.

Trusted and loved by professional swimmers, this elite training tool helps athletes develop explosive, race-ready starts with consistency and confidence. Give your team the competitive edge they need to train like champions—and win like them, too.

STARTING PLATFORM MAINTENANCE

COVERS

Starting Platform covers protect your investment by preventing unauthorized use of the platforms and shielding the platform surface from the elements when they are not use.

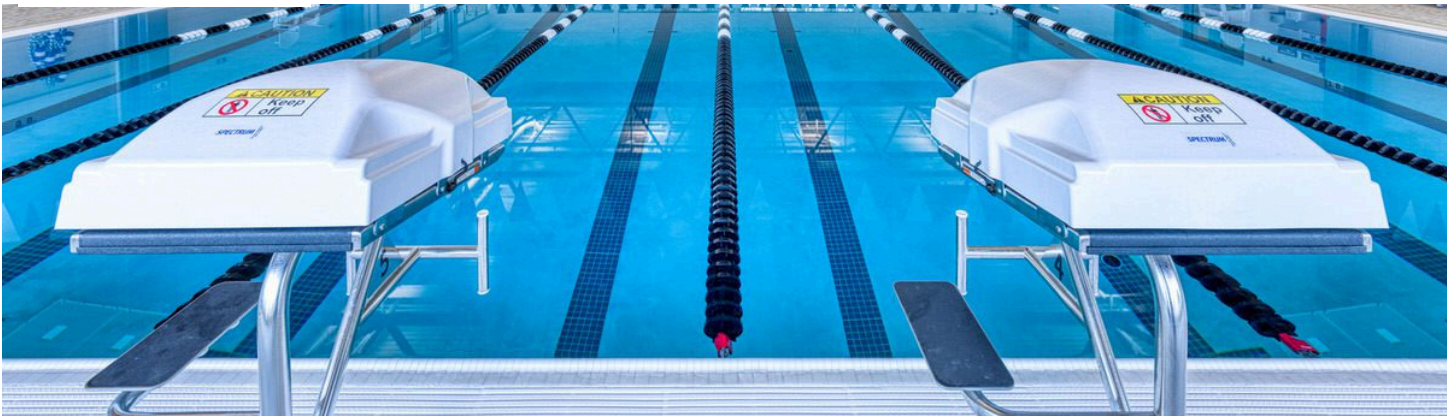
153174 - STARTING PLATFORM HARD COVER - WHITE

- Sturdy precision vacuum formed ABS plastic
- Includes elastic retaining strap and optional cable lock
- Universal fit covers all platforms up to 25" x 32" in size, with and without wedges
- UV protection
- Durable textured surface
- Easy stack = Easy storage



26315 - STARTING PLATFORM SOFT COVER

- UV rated polyethylene material with draw cord
- Universal fit covers all platforms up to 25" x 32" in size



MAINTENANCE

Cleaning your starting platforms on a regular basis is an essential part of ensuring longevity and minimizing rust formation on your starting platforms. Regimented cleanings will also reduce incidents of stains and discoloration on the block surface. The frequency in which platforms should be cleaned depends upon how harsh the environment is in your pool facility. Starting platforms can also look new again with our resurfacing for non-slip surfaces and powder coating. Contact us to learn more about this option.

UPGRADES

Many of our starting platforms can be upgraded to add the trackstart wedge and/or side rails to help your athletes start with confidence.

800.791.8056

ABOUT OUR PARENT COMPANY

PlayCore is a purpose-driven company that develops leading research and a complete portfolio of innovative products, programs, and services to build healthy communities through play and recreation. Learn more at www.playcore.com.



Building communities through play

THE PLAYCORE AQUATICS GROUP

The PlayCore Aquatics Group is the ultimate resource for creating all of your aquatic experiences. We specialize in providing your facility with unparalleled support throughout your entire journey in selecting the right amenities for your facility including architectural and interactive water features, water play, aquatic competition, compliance, safety, adventure play, and ongoing maintenance. Our team of experts is committed to making your dream a reality and will work with you to find exactly what you need (even if it's a custom solution), at a price point that meets your budget requirements. After the completion of your installation, we provide ongoing support for the lifetime of your product to ensure that you get the most out of your recreational, commercial, municipal, or competitive facility.



fountain people
A PLAYCORE Company

4600 Hwy 123
San Marcos, TX 78666
512.392.1155
fountainpeople.com



A PLAYCORE Company

7100 Spectrum Lane
Missoula, MT 59808
800.624.1235
spectrumproducts.com



ALTA
ENTERPRISES, INC.

A PLAYCORE Company

7100 Spectrum Lane
Missoula, MT 59808
800.624.1235
altapoolcovers.com



4600 Hwy 123
San Marcos, TX 78666
512.392.1155
waterodyssey.com



A PLAYCORE Company

10601 Oak St NE
St. Petersburg, FL 33716
888.426.8511
aquaworxusa.com



Colorado
TIME SYSTEMS
A PLAYCORE Company

1551 East 11th Street
Loveland, CO 80537
800.279.0111
coloradotime.com

800.791.8056



MADE IN USA

SPECTRUM
AQUATICS®

A **PLAYCORE** Company

7100 SPECTRUM LANE - MISSOULA MT. - 59808
800.791.8056 | INFO@SPECTRUMPRODUCTS.COM | SPECTRUMPRODUCTS.COM