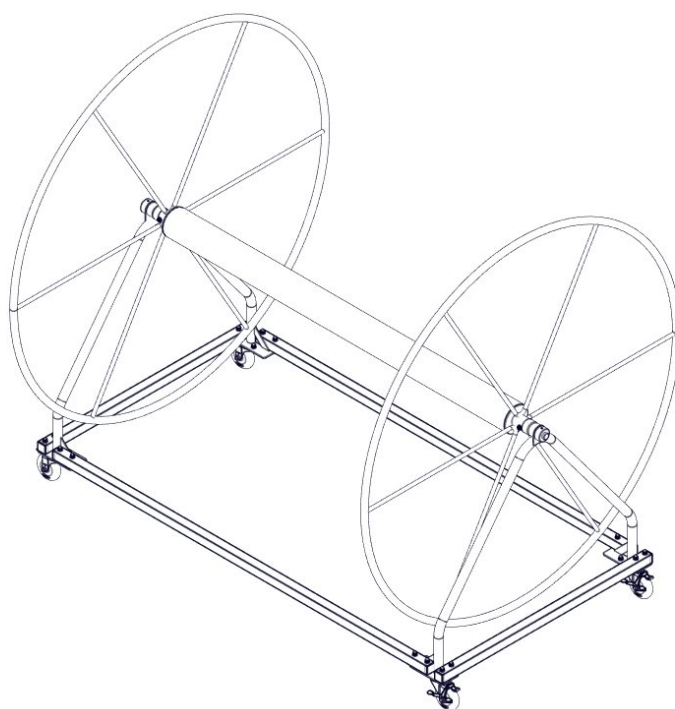


SHERIDAN STORAGE REEL

Part Number 55525-00



7100 Spectrum Lane | Missoula MT 59808 | 800.791.8056 | www.spectrumproducts.com

55525-00 Manual Rev B

You have purchased a Spectrum Products Sheridan Lane Line Storage Reel. Providing the unit is installed correctly and properly maintained, it will furnish you with many years of trouble free use. It is important to read this entire manual prior to beginning assembly or operation.

Shipping Information:

Each Sheridan Reel will arrive partially assembled. Before accepting the reel from the carrier, inspect for visible damage and match the contents with those listed below. Spectrum is not responsible for lost or damaged freight.

The box will contain all structural components and hardware. The following is a list of the components included with your shipment from Spectrum. Use Assembly Instruction Figures on the following pages, as a reference to identify each item listed.

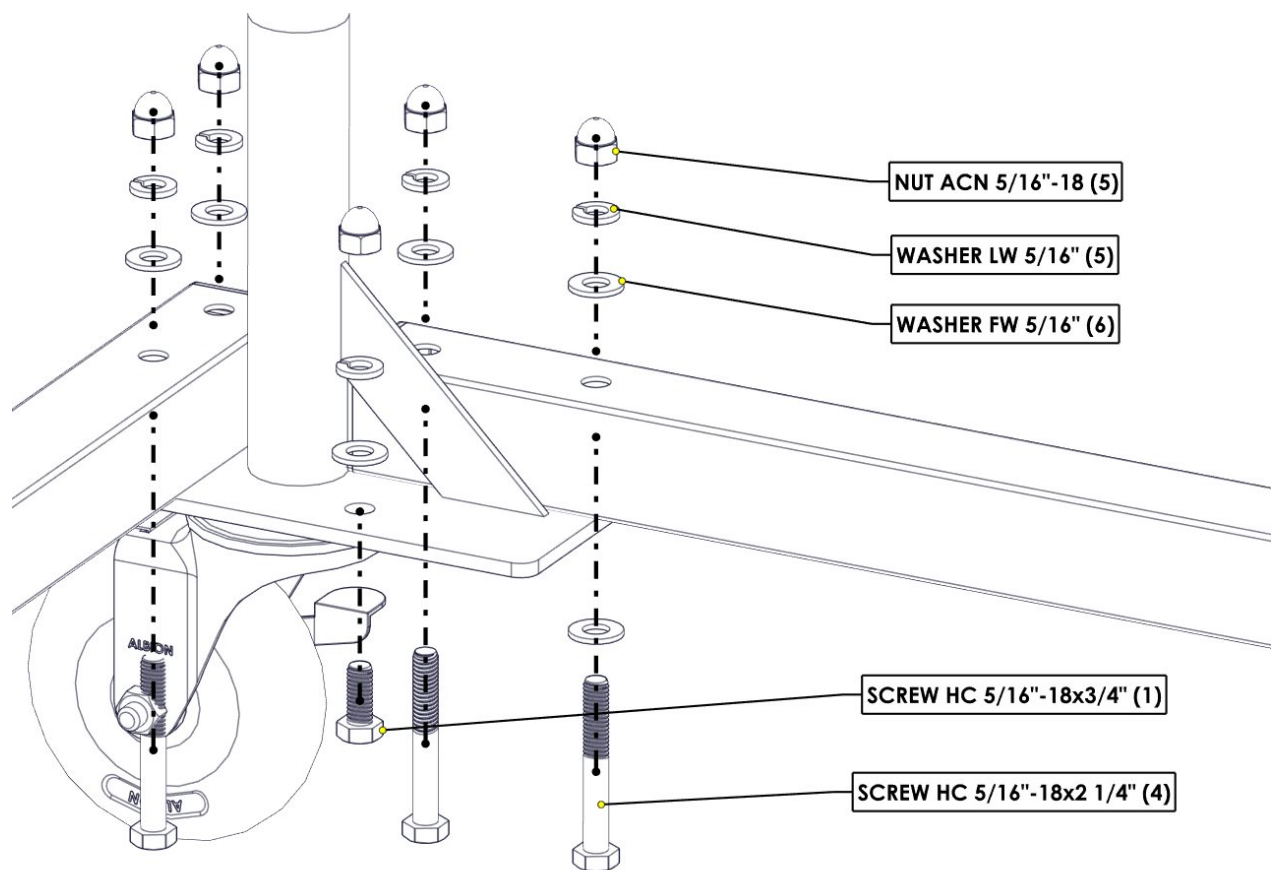
4	Casters	2	End Frame Tube Member
1	Storage Reel	2	End Frame Bushing
2	Captain's Wheel Weldments	2	Wheel Hub Bushing
2	Horizontal Frame Member	1	Associated Stainless Steel Hardware
2	End Frame Weldment		

Assembly Instruction

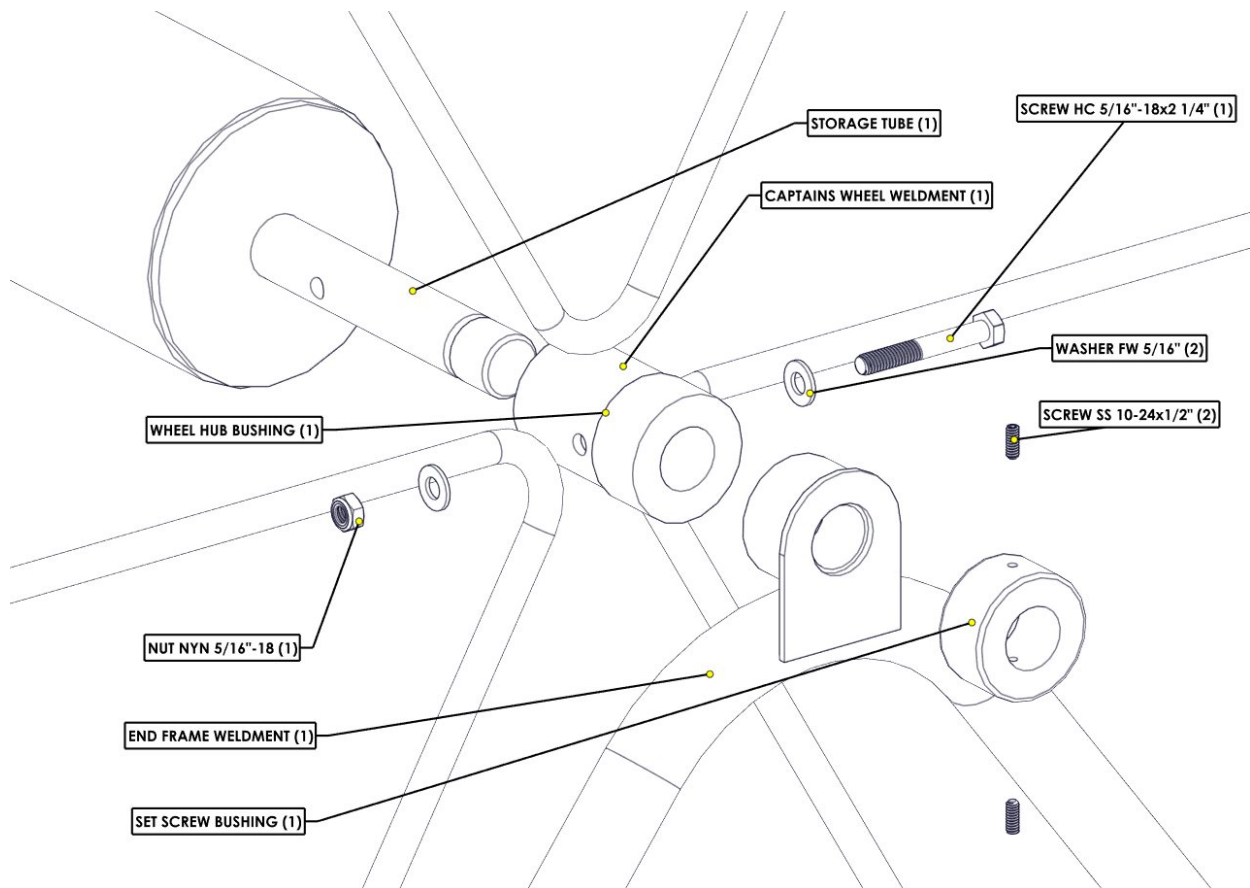
Tools Required:

- (2) ½" wrench
- (1) ¼" Hex Key

1. Two persons may be required for the assembly process. Attach the Horizontal Frame Members, End Frame Tube Members, End Frame Weldments, and Casters together using the hardware shown in the image below. Repeat this process for all four corners of the Sheridan Lane Line Reel. Leave the hardware loose until the remainder of the reel is fully assembled.



2. Ensure that the Wheel Hub Bushing is properly placed on the outer end of the Captain's Wheel Weldments. Holes should align between the plastic bushing and the stainless steel weldment. Repeat this process for the second Captain's Wheel Weldment.
3. Align the Captain's Wheel to the ends of the Storage Tube and fasten together using the bolt, washers, and nylock nut shown in the image below. This process must be completed for both sides of the Storage Reel.
4. Fasten the Storage Tube and Captain's Wheel Weldment to the end frame using the (2) set screws and set screw bushing. Tighten the set screws against the end of the storage tube. Complete with for both sides of the storage reel.
5. Tighten all fasteners to ensure rigidity of the Sheridan Lane Line Storage Reel.



Operator's Guide

The Sheridan Lane Line Storage Reel can hold 720' of 4" diameter lane line or 400' of 6" diameter lane line. Ensure that all 4 casters are locked when reeling and unreeling lane line.

Care and Maintenance

The following should be performed periodically to ensure safe and dependable use.

1. Remove any discoloration with a 3M scratch pad (stainless steel components only). Wipe clean with a sponge dampened with Spectra Clean. Repeat these steps several times to passivate the stainless steel.
2. Check all fasteners and connections and make sure they are snug.

Part Replacement & Troubleshooting

Please contact your local distributor or Spectrum Customer Service to order parts.
406.532.6321