

Anchor, Copolymer Compression Anchor, part number 42696

The Copolymer compression anchor shall support a 1.50" O.D. stainless steel rail, stanchion post, or other pool implement, providing circumferential support. The anchor shall employ a Copolymer retaining nut, which shall apply equal pressure around the circumference of the rail - providing support in all directions of force, preventing rail damage and deformation. The anchor shall be designed so as an escutcheon plate will not be necessary. Wedge type anchors or anchor systems incorporating dissimilar materials to that of the supported rails will not be allowed.

Anchor Body and Compression Nut

The anchor body and compression nut shall be fabricated from an advanced glass reinforced copolymer. The components of the anchor shall be precision injection molded, ensuring consistent strength, ductility, and resistance to impact. Following the molding of the components, no machining shall be required to achieve precise dimensions and tolerances. The anchor body and compression nut shall have ACME type threads. The anchor compression nut shall incorporate four (4) holes to accommodate a three point spanner wrench.

The anchor body shall incorporate 4 Copolymer anti-rotation fins. The fins shall be located on the anchor body and will prevent the anchor from spinning in a concrete deck. The fin shall be an integral part of the anchor body.

The anchor shall be 6" deep and shall be 1.50" inside diameter. Dimensional tolerances shall be within 0.007" ensuring a secure fit for 1.50" O.D. railing.

Bonding

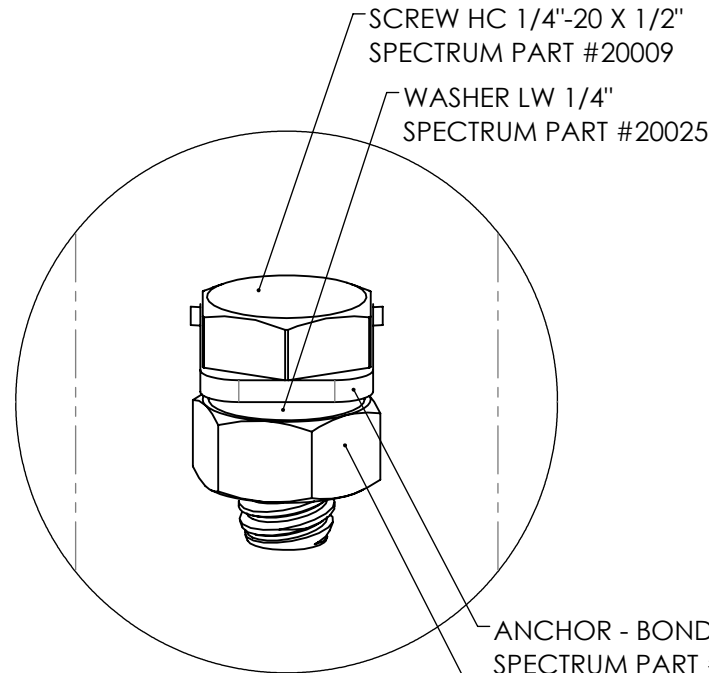
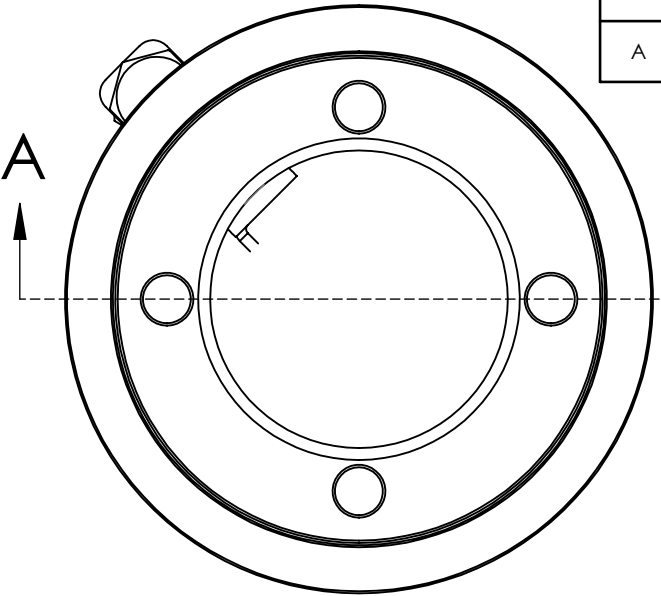
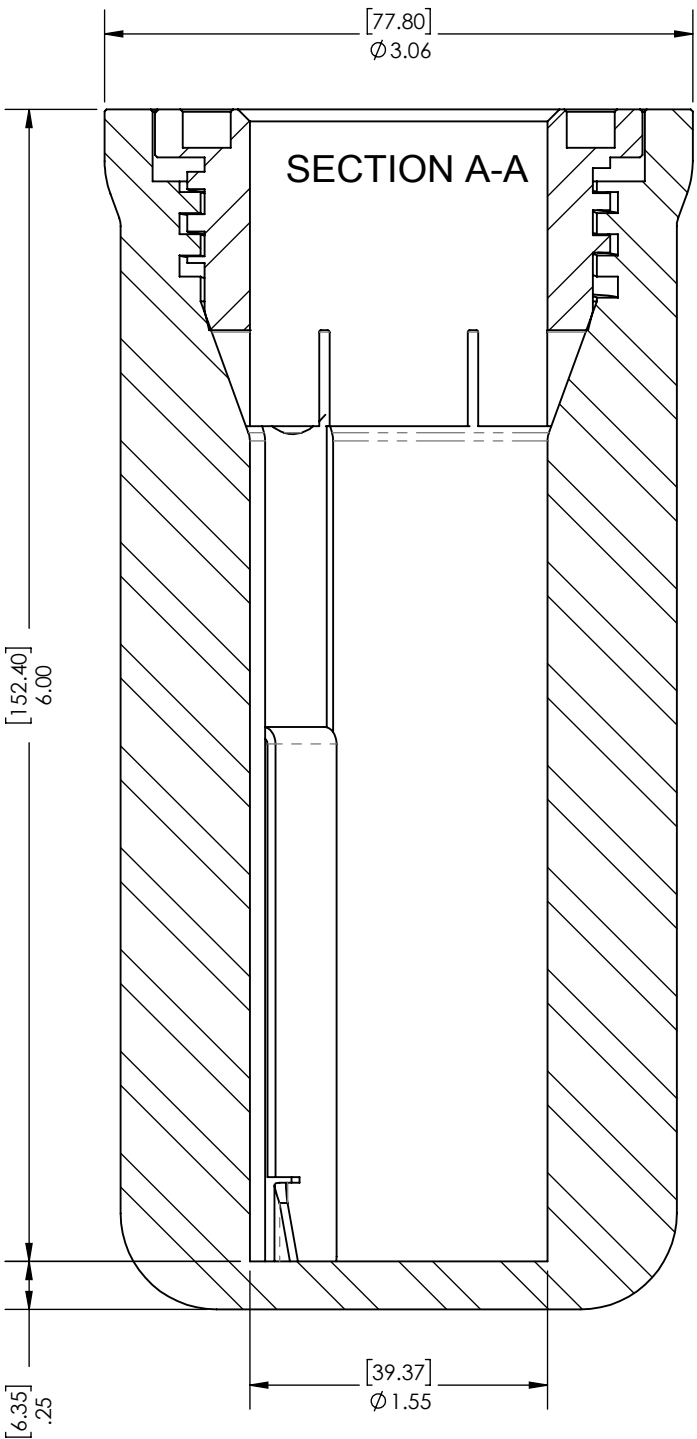
Bonding shall be carried out through a Hastelloy C-276 Nickel Molybdenum Chromium wrought bonding clip, this clip shall be inserted tangentially through the wall of the anchor body and rest in a groove that insures contact with the 1.50" tubing that the anchor will support. The bonding screw shall be a ¼ - 20 x ½" stainless hex head screw with the appropriate lock washer and nut capable of connecting a #8 copper bonding wire.

Spanner Wrench

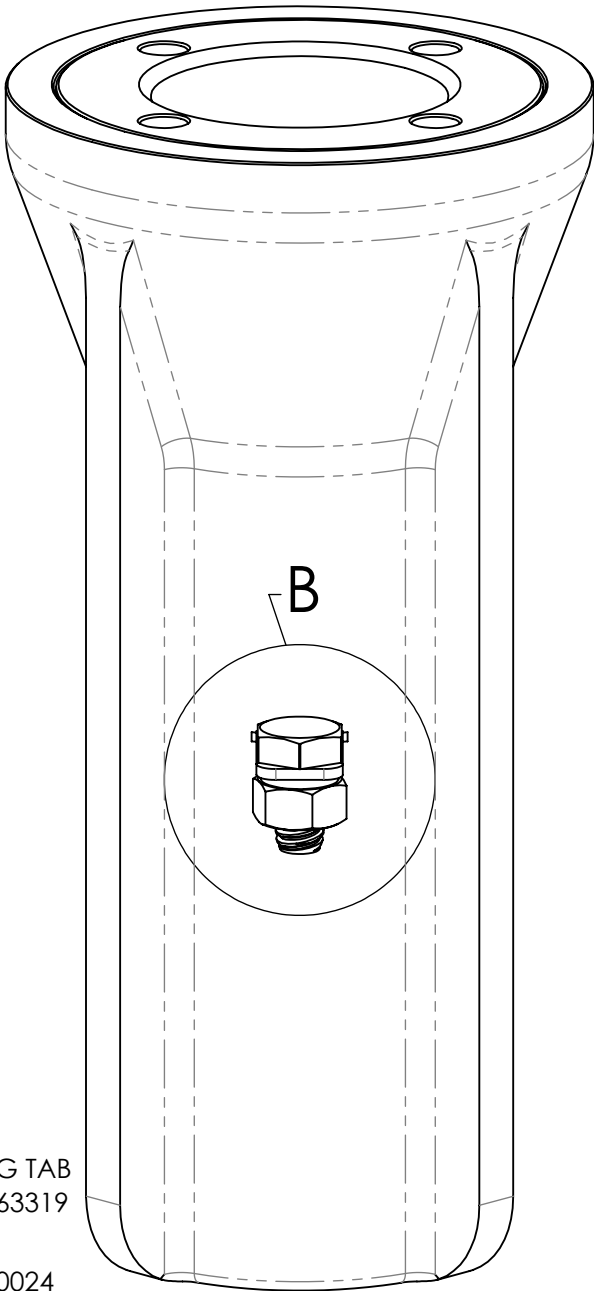
An anchor spanner wrench sold separately. It shall be fabricated of Stainless Steel and shall incorporate three hardened roll pins for compression nut contact and tightening.

Warranty

Two year limited warranty, see Spectrum Standard warranty at www.spectrumproducts.com



DETAIL B
SCALE 2 : 1



REVISIONS			
REV.	DESCRIPTION	DATE	APPROVED
A	PRODUCTION	8/12/2019	J.Maxwell

SPECTRUM
Aquatics

A PLAYCORE Company

7100 Spectrum Lane
800.791.8056

Missoula, Montana 59808
www.spectrumaquatics.com

ENGINEERING DATA

PRODUCT:	ANCHOR - 6in COMPRESSION 1.5 -			
MODEL #:	42696	CATALOG #:	42696	REVISION: A
MATERIAL:	COPOLYMER			
FINISH #:	N/A			

NOTE:
⚠ DIMENSIONS VARY WITH SPECIFIC APPLICATIONS. SPECIFICATIONS ARE NOMINAL AND ARE SUBJECT TO CHANGE. PLEASE CONTACT SPECTRUM AQUATICS FOR CUSTOM APPLICATIONS