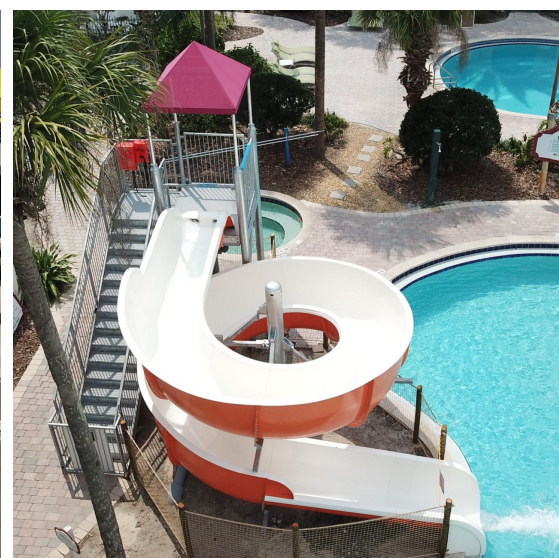




SPECTRUM
AQUATICS®
A PLAYCORE Company



POOL EQUIPMENT FOR RECREATION



Recreational
Equipment
for Everyone



BASKETBALL HOOPS



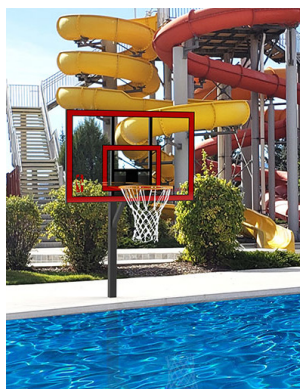
800.791.8056

BASKETBALL HOOPS

Water basketball is a fun and engaging way to encourage your customers to spend more time at your pool and play solo or with teams. We have several models to fit different levels of recreation.

All of our basketball hoops can be customized to mount directly to the deck if necessary. Clear backboards are standard, but there are customized heavy duty Bison backboards available. Your poolside basketball hoop can also be mounted to concrete pylons, walls, or anything your facility needs to maximize space and play.

The Jamma! and Slamma! basketball hoops are available with up to 10' rim height and offer various setback levels to provide you with the right poolside basketball hoop for your facility. All of the frames are constructed of 304L Stainless Steel to minimize corrosion and provide you with a poolside feature that will last for years to come.



JAMMA JR!

- 2.5' Square frame
- 42" Rim height
- Powder coated black
- 18" Standard setback
- 2.5" x 6" Square anchor

193400 - JAMMA JR!

193401 - 6" ANCHOR 316L STAINLESS STEEL - SOLD SEPARATELY



JAMMA JR! EXTENDED REACH

- 2.5' Square frame
- 42" Rim height
- Powder coated black
- 30" Extended reach setback
- 2.5" x 6" Square anchor

2010523 - JAMMA JR! EXTENDED REACH

193401 - 6" ANCHOR 316L STAINLESS STEEL - SOLD SEPARATELY



JAMMA!

- 4' Square frame
- 6' Rim height
- Bison heavy duty backboard
- Customized setback
- 4" x 36" Square anchor

173420 - JAMMA! 304L STAINLESS STEEL

173421 - JAMMA! 316L STAINLESS STEEL

58782 - 304L STAINLESS STEEL ANCHOR - SOLD SEPARATELY

171060 - 316L STAINLESS STEEL ANCHOR - SOLD SEPARATELY

BASKETBALL HOOPS

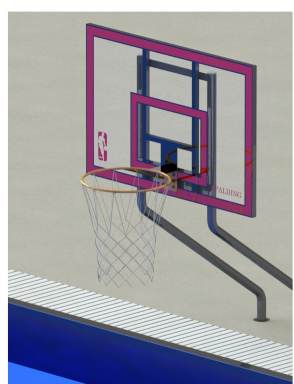


SLAMMA!

4' Square frame
6' - 10' Adjustable rim height
Adjustable hoop
29" Maximum setback
J-Bolt anchor

133058 - SLAMMA!

143094 - J-BOLT ANCHOR - SOLD SEPARATELY



DUAL POST BASKETBALL HOOP

47.63" x 31.63" Rectangular frame
47.75" Rim height
24" Standard setback
1.9" x 6" Anchor (x2)

57827 - DUAL POST BASKETBALL HOOP

24060 - STAINLESS STEEL ANCHOR (REQUIRES 2) - SOLD SEPARATELY

27042 - REPLACEMENT BACKBOARD & RIM



3-SIDED CUSTOM DESIGNED BASKETBALL HOOP

Sometimes BIGGER is just BETTER!

Spectrum Aquatics offer impressive 3-Sided Custom Designed Basketball Hoops. These extraordinary hoops are available upon request, allowing you to create the perfect basketball experience.



Scan to see all our Poolside Basketball
Hoops on SpectrumProducts.com

TO ORDER THE SPECTRUM AQUATICS® PRODUCTS IN THIS CATALOG, PLEASE CONTACT YOUR LOCAL REPRESENTATIVE AT THE PHONE NUMBER BELOW OR VISIT OUR WEBSITE AT:
WWW.SPECTRUMPRODUCTS.COM

POOL CLIMBING WALLS

What's more fun than the challenge of pushing yourself to climb to the top of a wall? The rewarding splash back into the pool! Our comprehensive line of pool climbing walls were developed by experts in the climbing industry and aquatic professionals.

Each wall is designed to withstand the harshest of indoor and outdoor aquatic settings. Pool climbing walls attract visitors of all ages and athletic abilities. From helping kids build self-esteem, to adult strength training, pool climbing walls expand poolside programming and require little maintenance.

Choose climbable surface heights from 8' - 16'. Available in clear or translucent blue or green wall panels.

Depth requirements vary by state, so be sure to check your local, city, and state requirements.



POOL CLIMBING WALLS



KERSPLASH® Challenger - Ready, Set, Climb!

KERSPLASH® Challenger pool climbing walls add sleek design elements and fun for all ages in both indoor and outdoor applications. Available in 2, 3, and 4 panel heights, they are modular to fit any space and deck configuration. The KERSPLASH® Challenger pool climbing wall is constructed of a powder-coated stainless steel frame and UV and chlorine resistant panels. The see-through panels eliminate any visual barrier on the deck and hold an attractive visual appeal and fun to any pool setting. Translucent blue or green panels are also available.

Features:

- 8-, 12-, or 16-foot climbing height
- Designed to last in harsh indoor and outdoor aquatic settings
- Powder-coated stainless steel frame
- Modular, scalable design
- Easy installation
- Custom logos and powder-coating options available

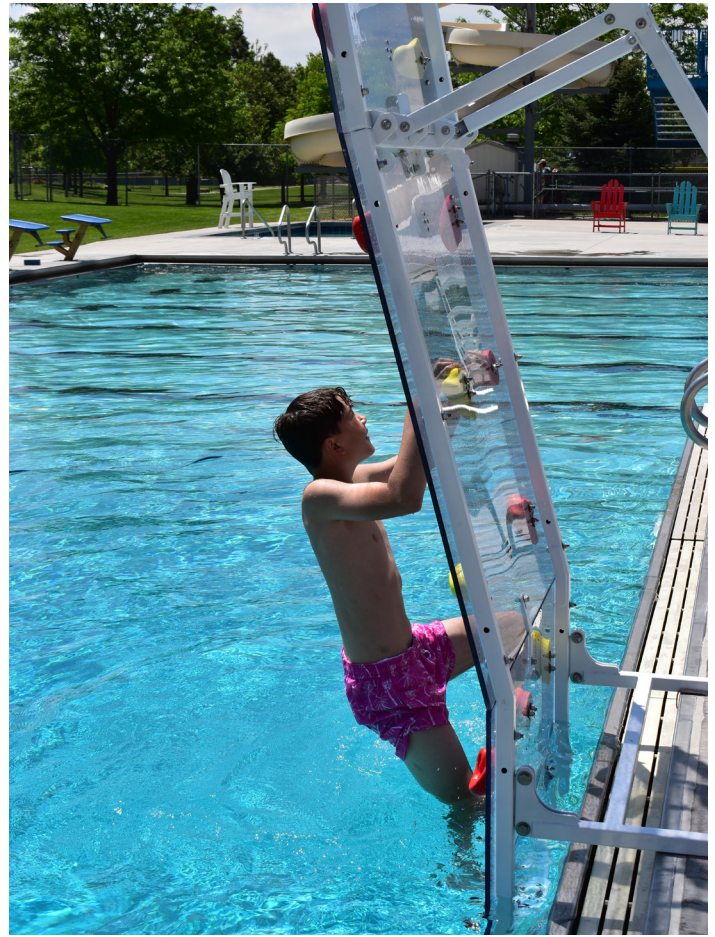
Requirements

- 35" x 48" or 51" x 48" deck footprint based on wall height
- 5' - 9' pool recommended pool depth based on wall height
- 4' clearance behind the wall for a walkway
- 5' clearance to either side of the wall
- 10' drop zone
- Pool depth determines the allowable climbing height



Scan to see KERSPLASH® on
SpectrumProducts.com

POOL CLIMBING WALLS



"The addition of the KERSPLASH® Challenger climbing wall has been an incredible asset to our facility. It provides an opportunity for something fun and exciting to do at the Chimney Park Pool. If our pool is open, there is a line to climb Challenger! We have noticed a 30% increase in revenue since having Challenger installed at our pool. It's awesome!"

Kendra Martin - Operations and Facilities Manager, Town of Windsor

2210999 - 8-FOOT KERSPLASH® CHALLENGER CLIMBING WALL
2210888 - 12-FOOT KERSPLASH® CHALLENGER CLIMBING WALL
2210777 - 16-FOOT KERSPLASH® CHALLENGER CLIMBING WALL



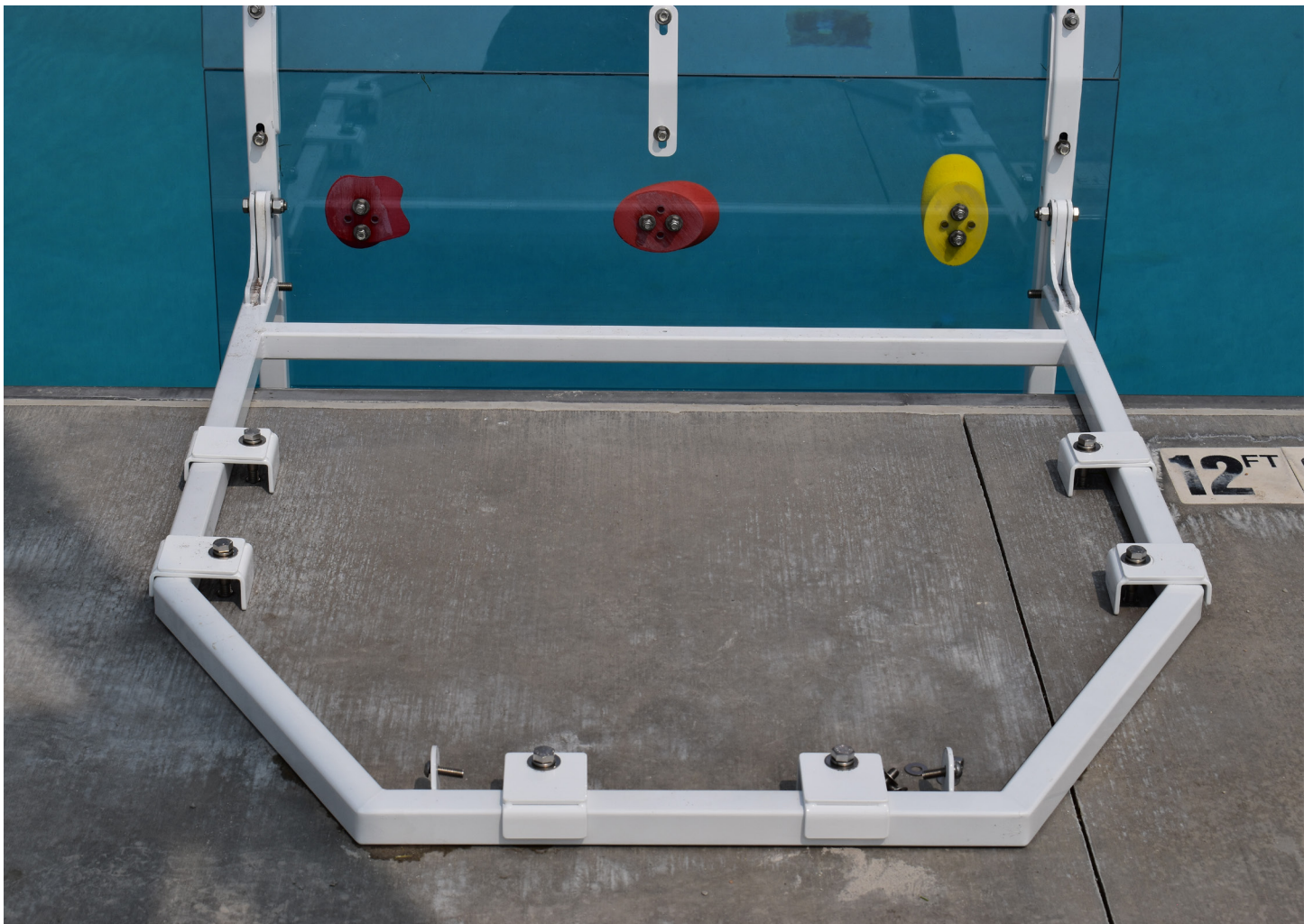
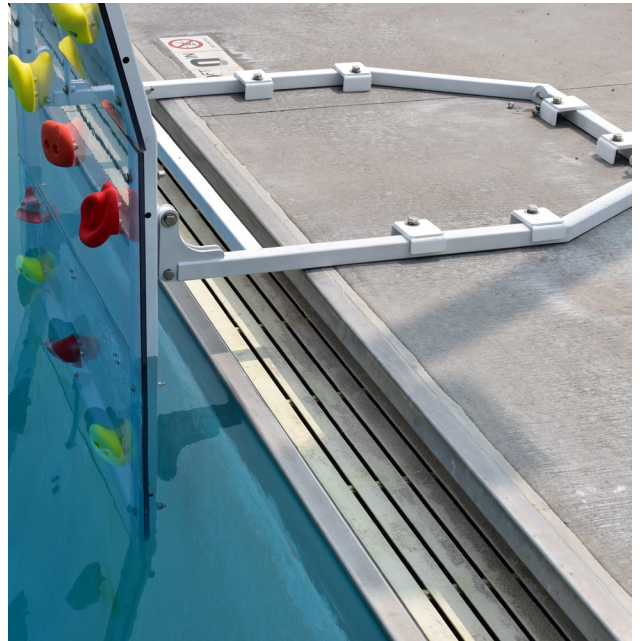
POOL CLIMBING WALLS

Installation Made Easy!

KERSPLASH® Challenger is designed to be easily installed by the facility maintenance staff, allowing for a quick and hassle free process that can typically be completed within just a few hours.

The solid square tubing base frame provides a sturdy foundation, ensuring the climbing wall remains secure and stable on the pool deck. By utilizing mounting clips, the installation is straightforward, requiring minimal effort and resources. Additionally, the mounting clip provide flexibility in working around deck obstacles when installing

KERSPLASH® Challenger is mounted using flush mount epoxy anchors.



POOL CLIMBING WALLS



KERSPLASH® pool climbing walls add adventure to pool decks in both indoor and outdoor applications. Available in 2, 3, and 4 panel heights, they are modular to fit any space and deck configuration. The KERSPLASH® pool climbing wall is constructed of a 100% stainless steel frame and UV and chlorine resistant panels. The see-through panels eliminate any visual barrier on the deck and hold an attractive visual appeal and fun to any aquatic setting.

Features:

- Designed to last in harsh indoor and outdoor aquatic settings
- All stainless steel is passivated and coated with SPECTRA-SHIELD® to resist corrosion
- Frame is constructed of 100% USA made stainless steel
- Each section comes in a sturdy single frame with solid one piece construction
- Easy installation

Requirements

- 35" of deck space
- 4' of clearance behind the wall for a walkway
- 5" to either side of the wall
- 10' drop zone
- Pool depth determines the allowable climbing height

Height	Description	Part Number
8'	2 clear panels	70535
8'	2 blue panels	70535-1WB
8'	2 green panels	70535-1WG
8'	2 alternating panels - blue/green	70535-1WA
12'	3 clear panels	70536
12'	3 clear panels with removable base	160552
12'	3 blue panels	70536-1WB
12'	3 green panels	70536-1WG
12'	3 alternating panels - blue/green	70536-1WA
16'	4 clear panels	70537
16'	4 blue panels	70537-1WB
16'	4 green panels	70537-1WG
16'	4 alternating panels - blue/green	70537-1WA

POOL CLIMBING WALLS

KERSPLASH® climbing walls are now available in clear see-through panels, and translucent blue and green panels!

Get a custom look at your facility by configuring the KERSPLASH® Kolor panels in a fun checkerboard pattern, alternating columns, or all clear, blue or green panels.



SLIDES



Scan to see our SlideWorx Slides
on [SpectrumProducts.com](https://www.spectrumproducts.com)



SLIDEWORX SERIES

Make a splash with high quality, commercial grade poolside slides - fun for all ages! Spectrum Aquatics' SlideWorx series poolside slides, powered by AquaWorx are available in a wide array of configurations and colors. Safety and rider experience are our top priority.

Features & Benefits:

- Galvanized steel or powder-coated steel frame
- Custom colors available to match any pool environment
- Fiberglass flumes
- Meets or exceeds ASTM slope velocity standards
- 400 gpm variable flow
- Variable speed pump included
- Average 2- 3 day installation



Flume Color Options:



SLIDEWORX SERIES

SINGLE ENCLOSED FLUME



Single-rider enclosed flume slide is perfect for thrill seekers of all ages. Designed with adults and teens in mind, it makes a great addition to any pool.

Features:

- Elevation: 8' 2"
- Linear footage: 45' 1"
- 300 lb weight limit
- 48" height requirement



Single-rider enclosed flume slide is perfect for thrill seekers of all ages. Designed with adults and teens in mind, it makes a great addition to any pool.

Features:

- Elevation: 7' 7"
- Linear footage: 39' 9"
- 300 lb weight limit
- 48" height requirement

SLIDEWORX SERIES

SINGLE OPEN FLUME



The lower elevation of this slide makes it less intimidating for younger guests who want to experience the thrill of an open flume slide.

Features:

- Elevation: 7' 0"
- Linear footage: 46' 0"
- 300 lb weight limit



Single-rider enclosed flume slide is perfect for thrill seekers of all ages. Designed with adults and teens in mind, it makes a great addition to any pool.

Features:

- Elevation: 9' 4"
- Linear footage: 67' 6"
- 300 lb weight limit
- 48" height requirement

SLIDEWORX SERIES

SINGLE OPEN FLUME & COMBINATION



Ideal for toddlers and younger children, the unique design makes for a less intimidating slide experience with bumps that help reduce accelerating speeds. This slide is intended for installation in the shallow waters of zero-entry and kiddie pools.

Features:

- Elevation: 4' 1"
- Linear footage: 13' 7"
- 300 lb weight limit



Double the fun and combine open and closed flume slides on one single structure. Separate platforms for each slide allow operations to run smoothly when wait lines inevitably begin.

Features:

- Open flume elevation: 9' 4"
- Closed flume elevation: 6' 5"
- Open flume linear footage: 67' 10"
- Closed flume linear footage: 17' 1"
- 300 lb weight limit
- 48" height requirement

POOLSIDE SLIDES

Make a splash with high quality, commercial grade poolside slides - fun for all ages! Spectrum Aquatics' poolside slides are available in a wide array of configurations and colors. Safety and rider experience are our top priority. These slides boast slip-resistant steps and decking, plus a variety of twists and turns to accommodate all facilities. Colorful and highly visible, poolside slides will give your pool a fresh look that will last for years to come.

Features & Benefits:

- Powder-coated steel frame
- Non-slip surface on steps and deck
- Bell and socket flumes - no leaks
- Modular to fit all deck configurations
- Buildable for future flume additions



STANDARD COLOR OPTIONS:



Scan to see our Poolside Slides on
SpectrumProducts.com

POOLSIDE SLIDES

SINGLE FLUME



Single flume triangle deck poolside slide features a single 360 ° enclosed slide flume, a triangle deck, and center steps with rails. The slide flume is fabricated from rotationally molded UV stabilized color impregnated LDPE. Custom colors are available.

Features:

- Platform height is 8'
- Flume length is 11.5'
- Deck width of slide is 13'
- Slip-resistant platform for safety
- 260 lb weight limit
- Installation available for an additional fee
- 3-year warranty when installed by a factory authorized installer
- Poolside slide structures are made to order

1810371 - SINGLE FLUME 360 ° TRIANGLE DECK



Single flume triangle deck poolside slide features a single 90 ° enclosed slide flume, a triangle deck, and center steps with rails. The slide flume is fabricated from rotationally molded UV stabilized color impregnated LDPE. Custom colors are available.

Features:

- Platform height is 8'
- Flume length is 14.5'
- Deck width of slide is 19.75'
- Slip-resistant platform for safety
- 260 lb weight limit
- Installation available for an additional fee
- 3-year warranty when installed by a factory authorized installer
- Poolside slide structures are made to order

1810547 - SINGLE FLUME 90 ° TRIANGLE DECK

POOLSIDE SLIDES

DOUBLE FLUME

Features:

- Flumes are fabricated from rotationally molded UV stabilized color impregnated LDPE
- Slip-resistant platform for safety
- Installation available for an additional fee
- 3-year warranty when installed by a factory authorized installer
- Poolside structures are made to order



Double flume half hex deck poolside slide features two 90° enclosed slide flumes, a half hex deck, and center steps with rails.

Features:

- Platform height is 8'
- Deck width of flumes is 35.75'
- 260 lb weight limit
- Slide curve: twist

1810555 - DOUBLE FLUME-90°/90° - HALF HEX DECK



Double flume half hex deck poolside slide features one 360° and one 90° enclosed slide flume, a half hex deck, and center steps with rails.

Features:

- Platform height is 8'
- Deck width of flumes is 24' 2"
- 260 lb weight limit

1810549 - DOUBLE FLUME-90°/360° - HALF HEX DECK



Double flume triangle deck poolside slide features one 360° and one 90° enclosed slide flume, a triangle deck, and center steps with rails.

Features:

- Platform height is 8'
- Deck width of flumes is 22.5'
- 260 lb weight limit

1810548 - DOUBLE FLUME-90°/360° - TRIANGLE DECK

POOLSIDE SLIDES

DOUBLE FLUME



Double flume half hex deck poolside slide features two 360 ° enclosed slide flumes, half hex deck, and center steps with rails.

Features:

- Platform height is 8'
- Deck width of flumes is 15'
- 260 lb weight limit

1810373 - DOUBLE FLUME- 360°/360° - HALF HEX DECK



Double flume dual triangle deck poolside slide features one 180 °and one 540° enclosed slide flume, two triangle deluxe decks, and center steps with rails.

Features:

- Platform height is 8'
- Deck width of flumes is 20.75'
- 260 lb weight limit

1810557 - DOUBLE FLUME- 180°/540° - DUAL TRIANGLE DECK

POOLSIDE SLIDES

QUAD FLUME



Quad flume half hex deck poolside slide features two 90 °and two 360° enclosed slide flumes, half hex deck, and center steps with rails.

Features:

- Platform height is 8'
- Deck width of flumes is 33.75'
- 260 lb weight limit

1810552 - QUAD FLUME- 90°/360° - HALF HEX DECK



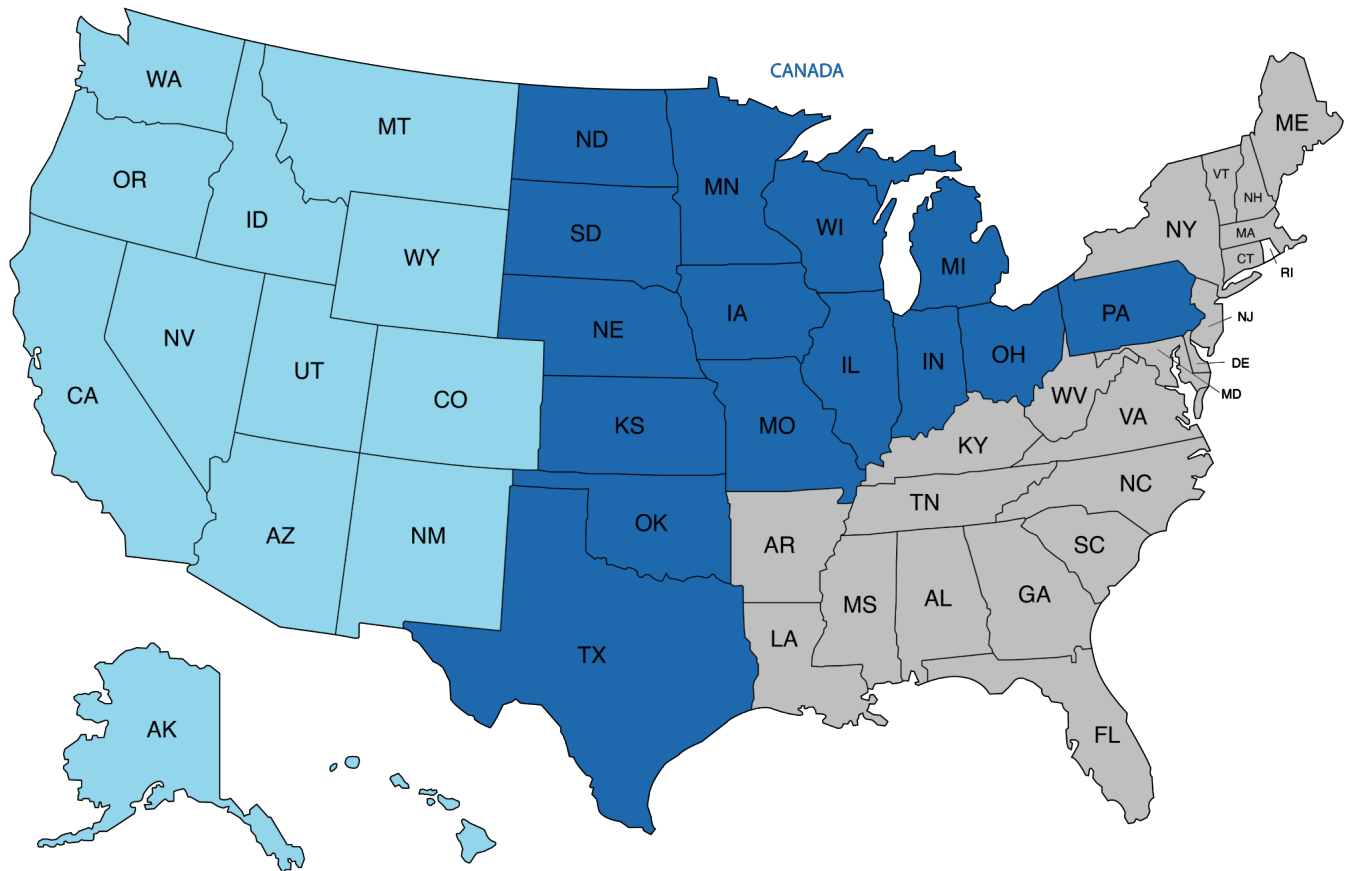
Quad flume half hex deck poolside slide features four enclosed slide flumes with varying degrees of turns, half hex deck, and center steps with rails.

Features:

- Platform height is 8'
- Deck width of flumes is 47'
- 260 lb weight limit

1810556 - QUAD FLUME- SUPREME HALF HEX DECK

SPECTRUM SALES TEAM



Western Region

Inside Sales Representative

Torie Madgwick:

torie.madgwick@spectrumproducts.com

Midwest/Canada/International

Sales/Inside Sales Supervisor

Rachel King:

rachel.king@spectrumproducts.com

Eastern Regional

Inside Sales Representative

Shay Stone:

shay.stone@spectrumproducts.co

National Sales Manager

Jake Godinez:

jake.godinez@spectrumproducts.com

Vice President of Sales, Marketing, and Customer Service

Nabil Khaled:

nabil.khaled@spectrumproducts.com

Note: Product descriptions may vary

ANTIWAVE is a registered trademark of Anti Wave International Pty Ltd., used with its permission

Duraflex is a registered trademark of Duraflex International Corp., used with its permission

Kersplash, Motion Trek, SPECTRA-SHIELD, Spectrum Aquatics, Spectrum, and Xcellerator are registered trademarks of Everlast Climbing Industries Inc., used with its permission

www.spectrumproducts.com

ABOUT OUR PARENT COMPANY

PlayCore is a purpose-driven company that develops leading research and a complete portfolio of innovative products, programs, and services to build healthy communities through play and recreation. Learn more at www.playcore.com.



Building communities through play

THE PLAYCORE AQUATICS GROUP

The PlayCore Aquatics Group is the ultimate resource for creating all of your aquatic experiences. We specialize in providing your facility with unparalleled support throughout your entire journey in selecting the right amenities for your facility including architectural and interactive water features, water play, aquatic competition, compliance, safety, adventure play, and ongoing maintenance. Our team of experts is committed to making your dream a reality and will work with you to find exactly what you need (even if it's a custom solution), at a price point that meets your budget requirements. After the completion of your installation, we provide ongoing support for the lifetime of your product to ensure that you get the most out of your recreational, commercial, municipal, or competitive facility.



fountain people™
A PLAYCORE Company

4600 Hwy 123
San Marcos, TX 78666
512.392.1155
fountainpeople.com



7100 Spectrum Lane
Missoula, MT 59808
800.624.1235
spectrumproducts.com



ALTA
ENTERPRISES, INC.
A PLAYCORE Company

7100 Spectrum Lane
Missoula, MT 59808
800.624.1235
altapoolcovers.com



4600 Hwy 123
San Marcos, TX 78666
512.392.1155
waterodyssey.com



A PLAYCORE Company

10601 Oak St NE
St. Petersburg, FL 33716
888.426.8511
aquaworxusa.com



**Colorado
TIME SYSTEMS®**
A PLAYCORE Company

1551 East 11th Street
Loveland, CO 80537
800.279.0111
coloradotime.com

800.791.8056



7100 SPECTRUM LANE – MISSOULA MT. – 59808

800.791.8056 | INFO@SPECTRUMPRODUCTS.COM | SPECTRUMPRODUCTS.COM