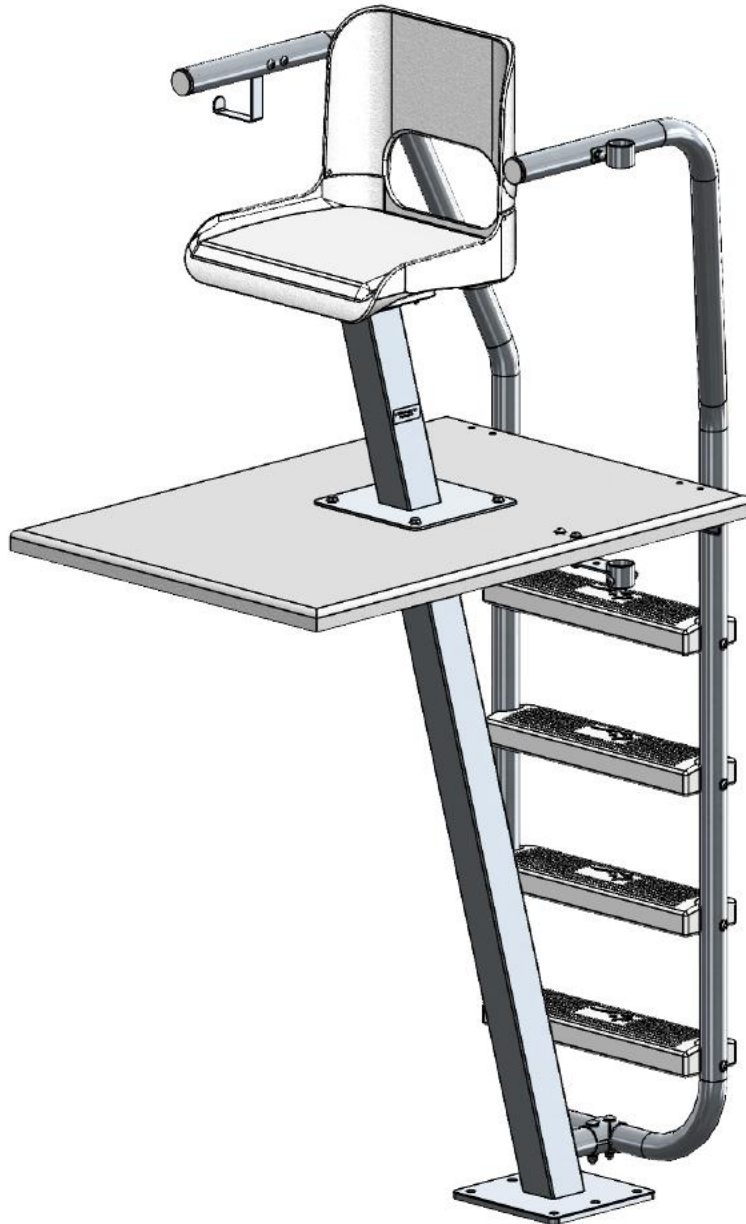


Sapphire Guard Chair



SPECTRUM
AQUATICS®
A **PLAYCORE** Company

7100 Spectrum Lane | Missoula MT 59808 | 800.791.8056 | www.spectrumproducts.com

Guard Chair OM

READ OWNERS MANUAL IN ENTIRETY BEFORE BEGINNING INSTALLATION.

You have purchased a Spectrum Products Sapphire Lifeguard Chair. Providing the unit is installed correctly and properly maintained, it will furnish you with many years of trouble free use. It is important to read this entire manual prior to beginning assembly or operation.

Shipping Information:

Each Guard Chair will arrive partially assembled. Before accepting the delivery from the carrier, inspect for visible damage and match the contents with those listed below. Spectrum is not responsible for lost or damaged freight.

The box will contain all structural components and hardware. Before assembly, locate and identify all hardware and components listed in the hardware lists below.

PALLET CONTENTS

1. Ladder - Handrail
2. Footboard
3. Main Support Column
4. Cage Anchor "If ordered with chair"

BOX CONTENTS

1. Folding Seat
2. Pedestal
3. Seat Swivel
4. Hardware Box
5. (5) Hardware Bags
6. Ring Buoy Holder
7. Upper Umbrella Holder
8. Lower Umbrella Holder
9. (2) Split Tee Halves

Tools Required

1. 5/8" Socket or Wrench
2. 9/16" Socket or Wrench
3. 3/8" Socket or Wrench
4. 3/4" Socket or Wrench
5. 5/32" Allen Wrench
6. 7/32" Allen Wrench

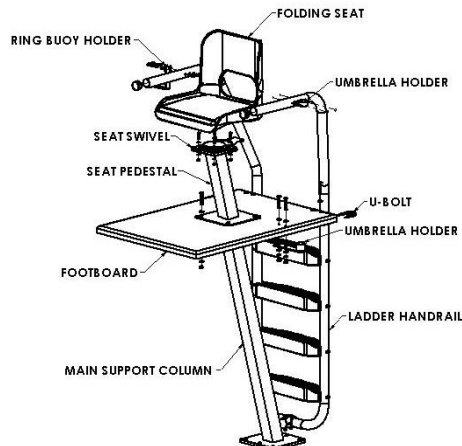


Figure 1

Anchor Installation Instructions:

Step 1: Determine where on the pool deck you want your guard chair to be. Make a mark on the deck edge at the selected location. Next, make a mark at the anchor location of the guard chair. **Figure 2** can be used as a reference.

Step 2: Using a jackhammer or concrete saw, knock out a 20" diameter hole in the concrete at the point of the second mark. The hole depth should be at least 12", as shown in **Figure 3**.

Step 3: Attach a wire to the grounding lug on one of the anchor legs. Lower the anchor into the hole and attach the other end of the wire to the bonding grid in order to ground the chair. Consult with an electrician or your local code regarding grounding requirements or alternate methods of grounding.

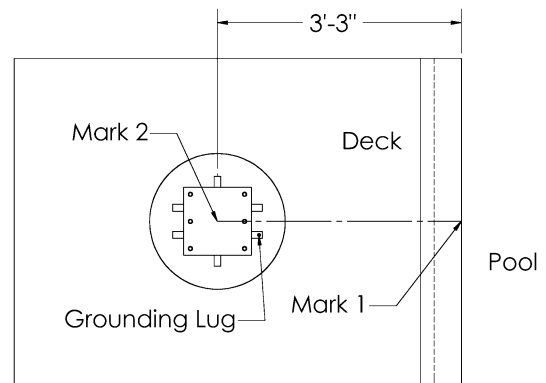


Figure 2

Step 4: Align the anchor with either of the "3-hole" sides facing the front. The top of the anchor plate should be flush with the pool deck and level.

Step 5: Fill in hole with a minimum of 4000 psi concrete. Allow concrete to cure for at least 48 hours before installing guard chair.

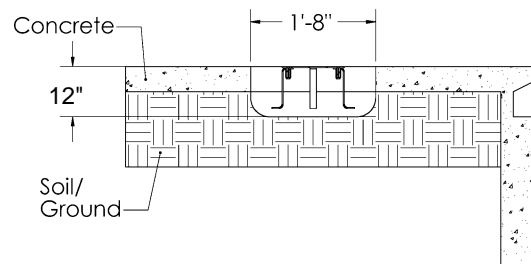


Figure 3

Guard Chair Assembly:

Step 1. Locate the Seat Pedestal, Seat Swivel, and the Folding Seat. Use the Hardware shown in figure 4 to attach the Swivel to the Pedestal. Next, slide the Seat Swivel onto the bottom of the folding seat.

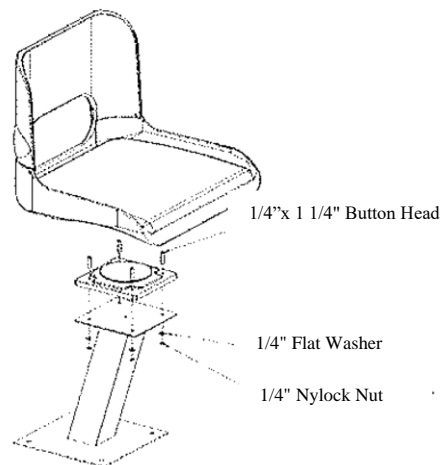


Figure 4

Step 2. Locate the Footboard and the Main Support Column. If you have not preordered the Guard Chair Anchor, it will be shipped attached to the Main Support Column. Remove the Anchor using a 3/4" wrench or socket. Instructions for setting the Anchor are included. Using the hardware shown in Figure 5 below, "sandwich" the Footboard between the Main Support Column and the Seat Pedestal. Next, attach the Lower Umbrella Holder to the Footboard using the hardware shown in Figure 5.

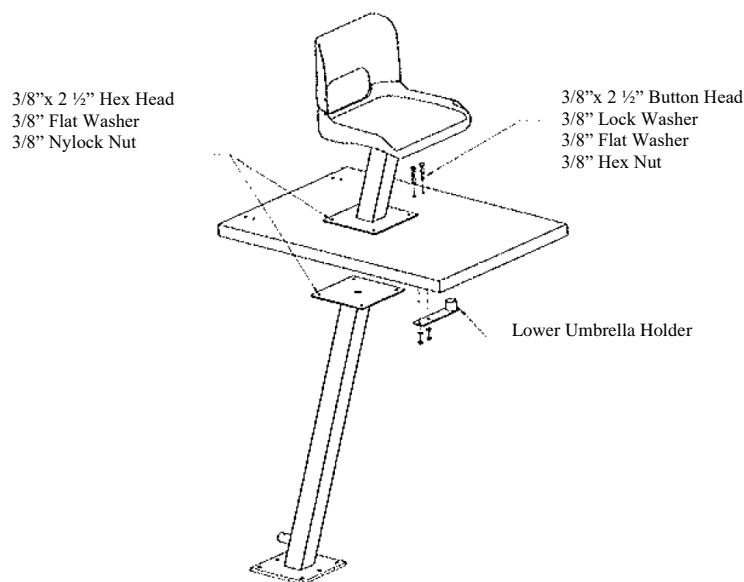


Figure 5

Step 3. Locate the Ladder-Handrail Assembly. Attach the Ring Buoy Holder and Upper Umbrella Holder to the Handrail using the hardware shown below in Figure 5. Attach the Ladder-Handrail Assembly to the Platform and Support Column using the hardware shown in Figure 6.

The bottom of the Ladder is connected to the Main Support Column with a Split Tee Connector. An example of the assembly of this joint can be seen in Figure 7 below.

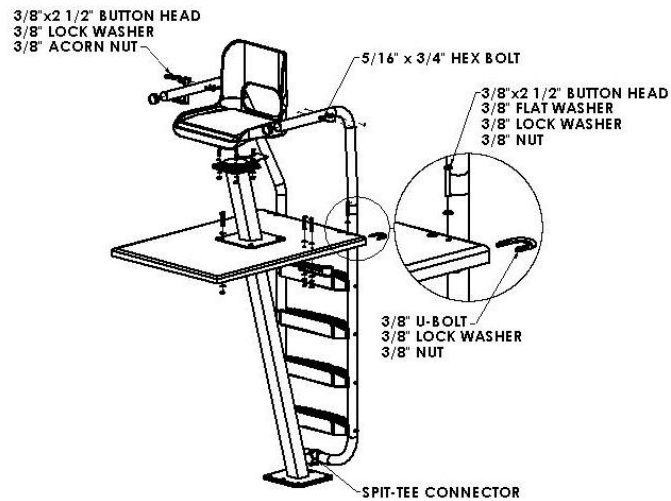


Figure 6

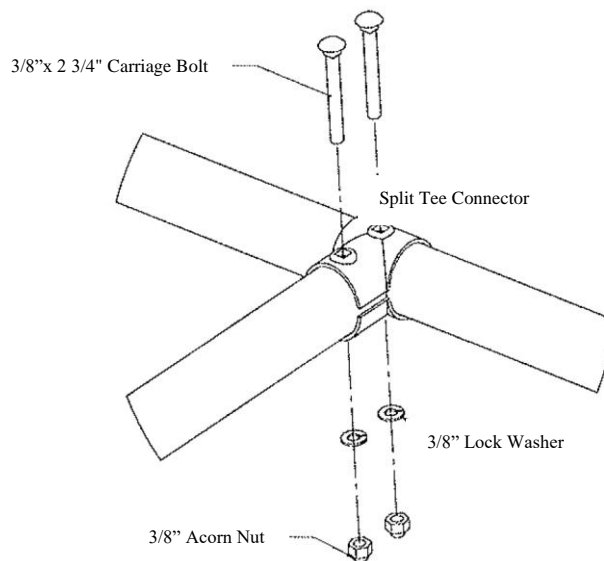


Figure 7

Step 4. If you already have the Anchor set, you can now stand the Guard Chair up and mount it to the Anchor using the 1/2" hex head bolts included. If the Anchor has not been set, follow the instruction included with the Anchor to do so.

Cleaning, Care and Maintenance:

Despite high resistance to corrosion, the 300-series stainless steel used in Spectrum products can be compromised in several ways. On rare occasions, Iron-based rust can occur. This type of corrosion can happen by encountering Halogen Salts (Chlorine and Bromine). Surface contamination and the formation of deposits may also drastically reduce the life of the product. High chemical concentration, warm, high humidity atmospheres in/around swimming pools create more aggressive existing conditions for steel components. Environments such as these catalyze the corrosion, thus increasing the need for upkeep. Our best advice for upkeep is simply “clean the metal when it is dirty to restore its original appearance”. The upkeep timeline could range from as often as once a day to as little as four times a year. Provided that cleaning schedules are carried out regularly, high performance and long life of your product will never be a worry. The cost and frequency to maintain the appearance of stainless steel is generally less in comparison to other materials and often offsets the higher initial costs associated with stainless steel products.

Spectrum Products® Cleaning Kit:

Periodic cleaning with Spectra-Clean™ System 1, Part Number 202050-00, is recommended for stainless steel used in aquatic facilities. Similarly, application of Spectra-Shield™, Part Number 57373 is recommended semi-annually to annually to protect from future discoloration and corrosion.

For any questions, comments, or concerns, please contact Spectrum Aquatics customer support at:

[800.791.8056](tel:800.791.8056)

7100 Spectrum Lane
Missoula, Montana 59808
USA

Thank you!