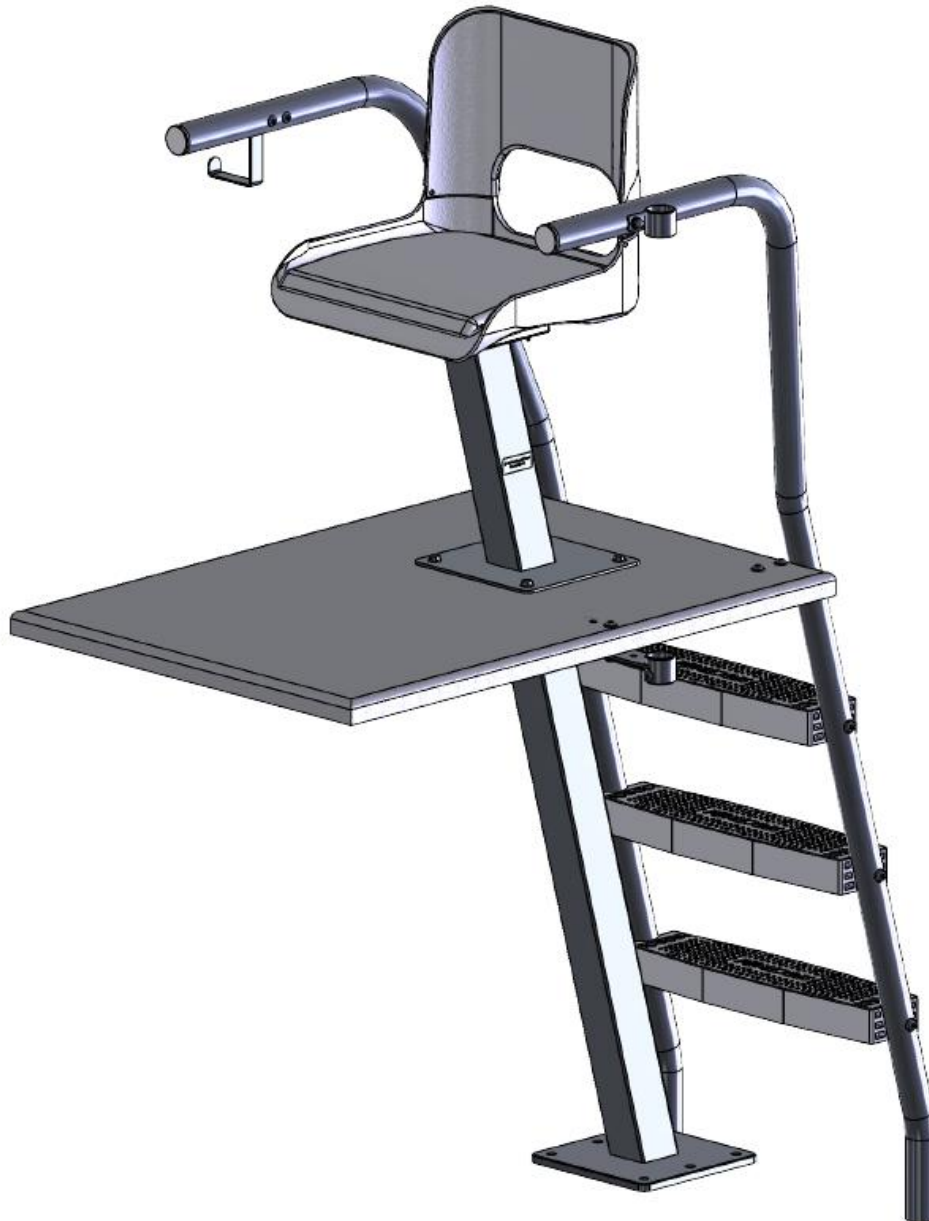


# Stimson Guard Chair



**SPECTRUM**  
**AQUATICS®**  
A **PLAYCORE** Company

7100 Spectrum Lane | Missoula MT 59808 | 800.791.8056 | [www.spectrumproducts.com](http://www.spectrumproducts.com)

GUARD CHAIR OM

**READ OWNERS MANUAL IN ENTIRETY BEFORE BEGINNING INSTALLATION.**

You have purchased a Spectrum Products Stimson Lifeguard Chair. Providing the unit is installed correctly and properly maintained, it will furnish you with many years of trouble free use. It is important to read this entire manual prior to beginning assembly or operation.

## Shipping Information:

Each Guard Chair will arrive partially assembled. Before accepting the delivery from the carrier, inspect for visible damage and match the contents with those listed below. Spectrum is not responsible for lost or damaged freight.

The box will contain all structural components and hardware. Before assembly, locate and identify all hardware and components listed in the hardware lists below.

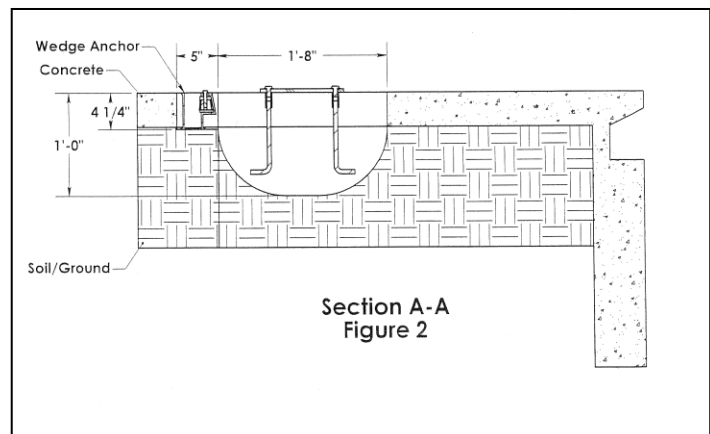
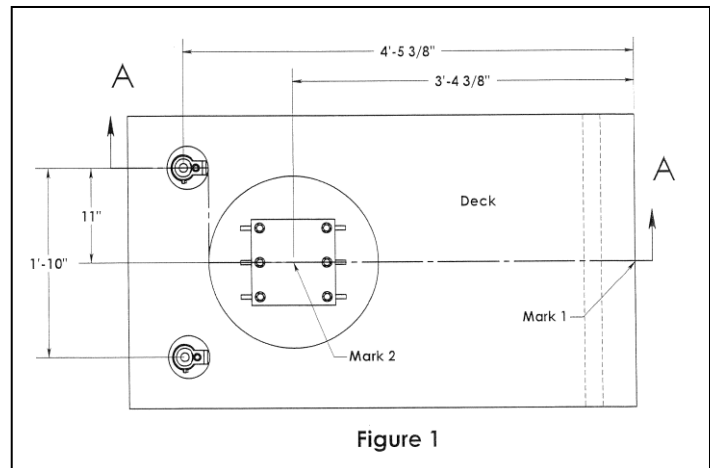
## Assembly:

### 1.90" O.D. Tubing Version Anchor Installation:

*(Use the figure 1 and 2 for clarification, the pool edge is at the right side of the drawing).*

*Spectrum Anchor Assembly Part Number 20013-00 sold separately*

1. Determine where on the pool deck you want to locate your new chair and make a mark at the pool edge.
2. Mark the anchor locations as follows:
  - a. Main Pedestal anchor  
setback: 3' 4 3/8" from the pool wall.
  - b. Wedge anchor setback: 4' 5 3/8" from the pool wall.
3. Using a jackhammer or concrete saw, cut out a 20-inch diameter hole in the concrete at the point of the Mark 2. The depth of the hole should be at least 12-inches.
4. Drill into the exposed sides of the existing concrete slab and insert new rebar to fuse the new concrete with the existing concrete.
5. Using a jackhammer or concrete saw, cut out two 5-inch diameter holes into the deck at the point of the wedge anchors. The depth of the holes should be at least 4 1/4-inches.
6. **NOTE: Consult with an electrician on local bonding**



**requirements before proceeding with the rest of the installation.**

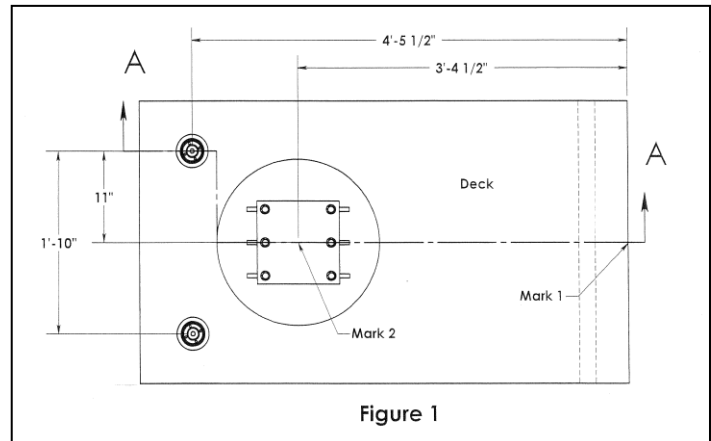
7. Attach a wire to the bonding bolt on one of the anchor rods of the main pedestal anchor. Lower the anchor into the hole and attach the other end of the wire to the bonding grid of the pool.
8. Square the pedestal anchor with the pool wall. The bottom of the plywood should be flush with the top of the pool deck. Level the anchor in the hole.
9. Attach a bonding wire to each of the wedge anchors and lower each anchor into its respective hole and attach to the bonding grid.
10. Fill each hole around the anchors with new concrete and allow it to cure for at least 48 hours before installing the guard chair.

**1.50" O.D. Tubing Version Anchor Installation:**

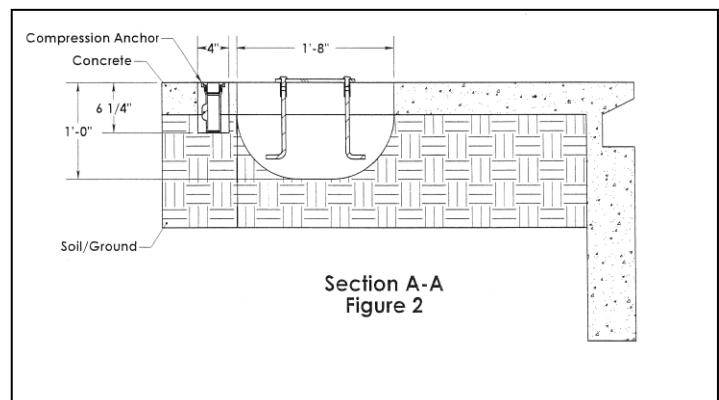
*(Use the figure 1 and 2 for clarification, the pool edge is at the right side of the drawing).*

*Spectrum Anchor Assembly Part Number 20016-00 sold separately*

1. Determine where on the pool deck you want to locate your new chair and make a mark at the pool edge.
2. Mark the anchor locations as follows:
  - a. Main Pedestal anchor setback: 3' 4 3/8" from the pool wall.
  - b. Wedge anchor setback: 4' 5 3/8" from the pool wall.



3. Using a jackhammer or concrete saw, cut out a 20-inch diameter hole in the concrete at the point of the Mark 2. The depth of the hole should be at least 12-inches.
4. Drill into the exposed sides of the existing concrete slab and insert new rebar to fuse the new concrete with the existing concrete.
5. Using a jackhammer or concrete saw, cut out two 4-inch diameter holes into the deck at the point of the wedge anchors. The depth of the holes should be at least 6 1/4-inches.
6. **NOTE: Consult with an electrician on local bonding requirements before proceeding with the rest of the installation.**



7. Attach a wire to the bonding bolt on one of the anchor rods of the main pedestal anchor. Lower the anchor into the hole and attach the other end of the wire to the bonding grid of the pool.
8. Square the pedestal anchor with the pool wall. The bottom of the plywood should be flush with the top of the pool deck. Level the anchor in the hole.
9. Attach a bonding wire to each of the wedge anchors and lower each anchor into its respective hole and attach to the bonding grid.
10. Fill each hole around the anchors with new concrete and allow it to cure for at least 48 hours before installing the guard chair.

## Guard Chair Assembly & Installation – Hardware Lists

### Hardware list: (1.90" Version)

#### Ladder to footboard Hardware:

- (4) 3/8"x2 3/4" Button Head Bolts - 564956-03
- (4) 3/8" Flat Washer - 565250-03
- (4) 3/8" Lock Washer - 565200-03
- (4) 3/8" Hex Nut - 565050-03

#### Step Tread Hardware:

- (6) 3/8"x2 1/2" Step Bolt - 564826-03
- (6) 3/8" hex Nut - 565050-03
- (6) 3/8" Lock Washer - 565200-03
- (6) 3/8" Flat Washer - 565250-03

#### Ring Buoy Hardware:

- (2) 5/16"x2 1/2" Button Head Bolt - 562970-03
- (2) 5/16" Flat Washer - 563200-03
- (2) 5/16" Lock Washer - 563150-03
- (2) 5/16" Acorn Nuts - 563050-03

#### Pedestal to Footboard Hardware:

- (4) 3/8"x3" Hex Head Bolt - 564500-03
- (8) 3/8" Flat Washer - 565250-03
- (4) 3/8" Nylock Nut - 565150-03

#### Quick Disconnect Hardware:

- (4) 1/4"x1 1/4" Button Head Bolt - 561279-03
- (4) 1/4" Flat Washer - 561095-03
- (4) 1/4" Nylock Nut - 561080-03

#### Umbrella Holder Hardware:

- (2) 3/8"x2 3/4" Button Head Bolts - 564956-03
- (2) 3/8" Flat Washer - 565250-03
- (2) 3/8" Lock Washer - 565200-03
- (2) 3/8" Hex Nut - 565050-03
- (2) 5/16"x2 1/2" Button Head Bolt - 562970-03
- (2) 5/16" Flat Washer - 563200-03
- (2) 5/16" Lock Washer - 563150-03
- (2) 5/16" Acorn Nuts - 563050-03

### Hardware list: (1.50" Version)

#### Ladder to footboard Hardware:

- (4) 3/8"x2 1/2" Button Head Bolts - 564956-03
- (4) 3/8" Flat Washer - 565250-03
- (4) 3/8" Lock Washer - 565200-03
- (4) 3/8" Hex Nut - 565050-03

#### Step Tread Hardware:

- (6) 3/8"x2" Step Bolt - 564826-03
- (6) 3/8" hex Nut - 565050-03
- (6) 3/8" Lock Washer - 565200-03
- (6) 3/8" Flat Washer - 565250-03

#### Pedestals to Footboard Hardware:

- (4) 3/8"x3" Hex Head Bolt - 564500-03
- (8) 3/8" Flat Washer - 565250-03
- (4) 3/8" Nylock Nut - 565150-03

#### Quick Disconnect Hardware:

- (4) 1/4"x1 1/4" Button Head Bolt - 561279-03
- (4) 1/4" Flat Washer - 561095-03
- (4) 1/4" Nylock Nut - 561080-03

**Ring Buoy Hardware:**

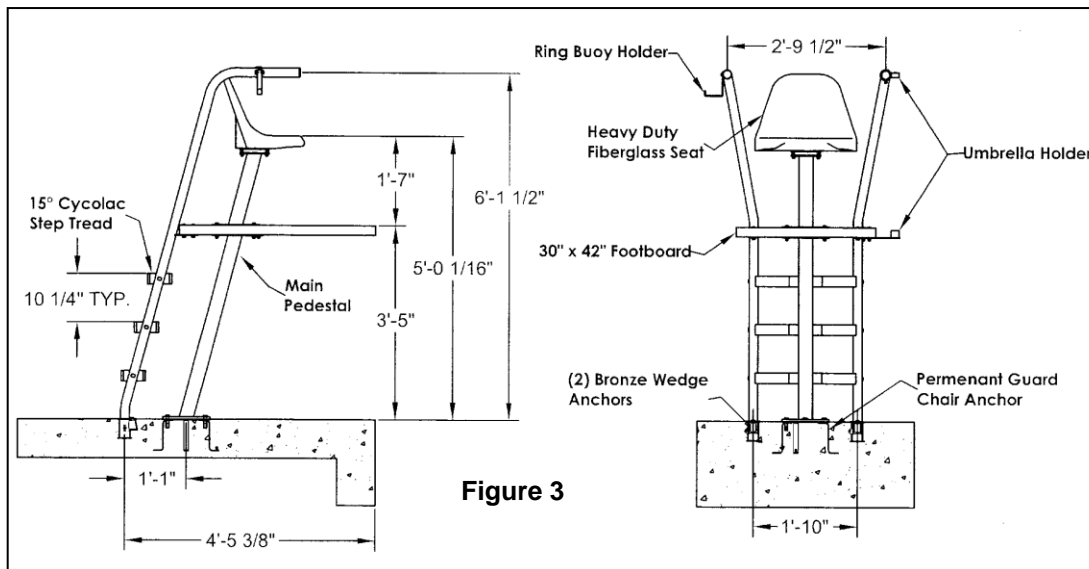
(2) 5/16"x2" Button Head Bolt	- 562970-03
(2) 5/16" Flat Washer	- 563200-03
(2) 5/16" Lock Washer	- 563150-03
(2) 5/16" Acorn Nuts	- 563050-03

**Umbrella Holder Hardware:**

(2) 3/8"x2 1/2" Button Head Bolts	- 564956-03
(2) 3/8" Flat Washer	- 565250-03
(2) 3/8" Lock Washer	- 565200-03
(2) 3/8" Hex Nut	- 565050-03
(2) 5/16"x2" Button Head Bolt	- 562970-03
(2) 5/16" Flat Washer	- 563200-03
(2) 5/16" Lock Washer	- 563150-03
(2) 5/16" Acorn Nuts	- 563050-03

**Assembly Instructions:**

(Use figure 3 for clarification).



Read the entire manual before assembly to familiarize yourself with the product. Actual assembly of the chair, less the anchor installation, should take approximately 1 to 2 hours depending upon your experience. Two persons are helpful when assembling the main pedestal to the footboard and lifting into place on the anchor.

**NOTE:** The instructions that follow cover assembly of both the 1.90" tubing and 1.50" tubing versions of the chair. Verify the hardware list of the appropriate model you are assembling. Differences are mainly in the size of hardware used.

1. Attach the Main Pedestal and chair pedestal to the footboard by sandwiching the footboard between the two pedestals and securing with (4) 3/8"x2 3/4" Button Head Bolts (3/8"x2 1/2" for 1.5 version), (4) 3/8" Flat Washers, (4) 3/8" Lock Washers and (4) 3/8" Hex Nuts.
2. Stand the assembly up and attach it to the permanent guard chair anchor already in the deck. The end of your footboard should come flush with the pool wall. Tighten the assembly to the anchor bolts using the 1/2" hardware supplied with your anchor.
3. Remove the seat from the quick disconnect swivel by pressing down on the tab at the back of the assembly and sliding the seat off and attach the quick disconnect swivel

assembly to the top of the seat pedestal using the (4) 1/4" x 1-1/4" Button Head Bolts, (4) 1/4" Flat Washers and (4) 1/4" Nylock Nuts.

4. Slide the seat onto the quick disconnect swivel assembly until it clicks into place.
5. Insert the ladder rails into the rear wedge/compression anchors. Do not tighten the anchors at this time.
6. Attach the ladder rails to the footboard using the remaining (4) 3/8"x2 3/4" Button Head Bolts (3/8"x2 1/2" for 1.5 version), (4) 3/8" Flat Washers, (4) 3/8" Lock Washers and (4) 3/8" Hex Nuts.
7. Insert the step treads between the ladder rails and secure with the (6) 3/8"x2 1/2" tread bolts (3/8"x2" for 1.5 version), (6) 3/8" Flat Washers, (6) 3/8" Lock Washers and (6) 3/8" Hex Nuts.
8. Attach the lower umbrella holder to the footboard using (2) 3/8"x2 3/4" Button Head Bolts (3/8"x2 1/2" for 1.5 version), (2) 3/8" Flat Washers, (2) 3/8" Lock Washers and (2) 3/8" Hex Nuts.
9. Attach the upper umbrella holder to one of the ladder rails using (2) 5/16"x2 1/2" Button Head Bolts (5/16"x2" for 1.50" Version), (2) 5/16" Flat Washers, (2) 5/16" Lock Washers and (2) 5/16" Acorn Nuts.
10. Attach the ring buoy holder to the other ladder rail using (2) 5/16"x2 1/2" Button Head Bolts (5/16"x2" for 1.50" Version), (2) 5/16" Flat Washers, (2) 5/16" Lock Washers and (2) 5/16" Acorn Nuts.
11. Tighten all hardware and wedge/compression anchors.

## **Cleaning, Care and Maintenance:**

Despite high resistance to corrosion, the 300-series stainless steel used in Spectrum products can be compromised in several ways. On rare occasions, Iron-based rust can occur. This type of corrosion can happen by encountering Halogen Salts (Chlorine and Bromine). Surface contamination and the formation of deposits may also drastically reduce the life of the product. High chemical concentration, warm, high humidity atmospheres in/around swimming pools create more aggressive existing conditions for steel components. Environments such as these catalyze the corrosion, thus increasing the need for upkeep. Our best advice for upkeep is simply “clean the metal when it is dirty to restore its original appearance”. The upkeep timeline could range from as often as once a day to as little as four times a year. Provided that cleaning schedules are carried out regularly, high performance and long life of your product will never be a worry. The cost and frequency to maintain the appearance of stainless steel is generally less in comparison to other materials and often offsets the higher initial costs associated with stainless steel products.

## **Spectrum Products® Cleaning Kit:**

Periodic cleaning with Spectra-Clean™ System 1, Part Number 202050-00, is recommended for stainless steel used in aquatic facilities. Similarly, application of Spectra-Shield™, Part Number 57373 is recommended semi-annually to annually to protect from future discoloration and corrosion.

For any questions, comments, or concerns, please contact Spectrum Aquatics customer support at:

[800.791.8056](tel:800.791.8056)

7100 Spectrum Lane  
Missoula, Montana 59808  
USA

Thank you!