

SPECTRUM[®] ***Aquatics***

A **PLAYCORE** Company

Powdercoat Maintenance Guide



Monthly to Yearly Maintenance

Cleaning your powdercoated products on a regular basis is an essential part of ensuring longevity and minimizing rust formation on the surfaces. The frequency in which powdercoated products should be cleaned depends upon how harsh the environment is in your pool facility. For instance, indoor pools with poor air circulation may necessitate rinsing of the products 1-2 times per week with tap water. This will ensure the removal of corrosive airborne contaminants that will inevitably land on the powdercoated surfaces in your facility.

General Maintenance for Powder Coated Frame

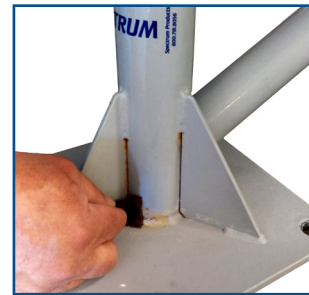
- 1 Use a non-abrasive soap and tap water. Avoid harsh chemicals and disinfectants. Always read the label instructions on any cleaner before applying it to a surface.
- 2 Periodically check the structure for scratching or chips. If found, please follow instructions listed below in the “Spot/Scratch Repair Instructions”.
- 3 If rust is present, clean the surface with a non-abrasive cleaner and contact Spectrum Aquatics to purchase a powder coat touch-up kit.
- 4 After thoroughly cleaning the starting platform frame, you can apply car wax and buff to a shine. This will help keep your platforms looking clean and new.
- 5 Apply WD-40 as necessary to wedge/ rail bracket to help insure smooth wedge movement.

Powder Coating Disclaimer and Repair Suggestions

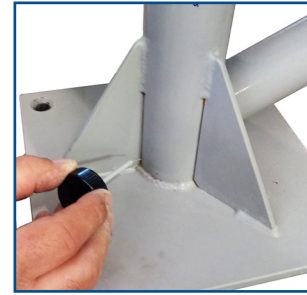
Powder coating is a protective coating that not only improves product aesthetics, but also reduces corrosion by acting as a barrier against oxygen and water. Although powder coating decelerates the onset of rust formation, it does not permanently eliminate it. Damage or chips to the powder coating barrier can propagate, causing coating delamination. In order to keep your powder coated products in optimal condition, it will be necessary to examine them on a regular basis for chips, scratches or signs of corrosion. When addressed immediately, damage to powder coating can be spot repaired to prolong product life.

Spot/Scratch Repair Instructions

- 1 Remove any loose paint from the chipped area by scrubbing lightly with fine-grit sandpaper.
- 2 Wash the exposed surface and surrounding area with a mild detergent or Spectra Clean and a soft rag.
- 3 Rinse and dry the cleaned surface thoroughly.
- 4 Immediately apply a zinc-rich (or other rust inhibiting) primer. Let dry.



- 5 Dip a small paintbrush into your chosen paint color, and apply one coat of paint to the area. We recommend using a high quality single stage 2k urethane automotive paint.



- 6 Allow the first layer of paint to dry, and then apply a second coat.

- 7 Apply a third coat, if necessary. Allow each successive coat to dry before applying another.

Tips and Warnings

- 1 A rust-inhibiting primer will help prevent the damage from spreading, and it will also prevent any exposed metal from rusting.
- 2 This repair works well for minor chips and scratches, but can be noticeable if used on large patches. The method described above is intended to restore the barrier protecting the stainless steel the surface.
- 3 It will be extremely difficult to match the exact color and thickness of the powder coating. Do not expect a perfect match.
- 4 A clear coat can be applied to the repainted area, if necessary, to match a glossy surface.

*Please contact your local distributor or
Spectrum Aquatics' Customer Service to order parts 800-791-8056.
Or visit our website at www.spectrumproducts.com