

Lane Line Trap, part number 1810494

Specifications:

The Lane Line Trap is to be embedded into the customer's deck. The unit shall be constructed out of 304L series stainless steel. The unit provides a method for passing a lane line through the deck for storage purposes in a controlled and smooth manner.

The Lane Line Trap assembly shall consist of the following components:

Lane Line Trap Body

The main body of the Lane Line Trap shall be constructed 12 gauge 304L series stainless sheet, 1 1/2"x1/8" 304L rectangular bar stock, and 1.90" 304L round tube. It shall consist of a rectangular open ended box with a flange on the outside and two rings on the inside serving as guides. A hanger is provided inside the unit to secure the end of the lane line when stored. The unit shall be fully welded.

Lane Line Trap Lid

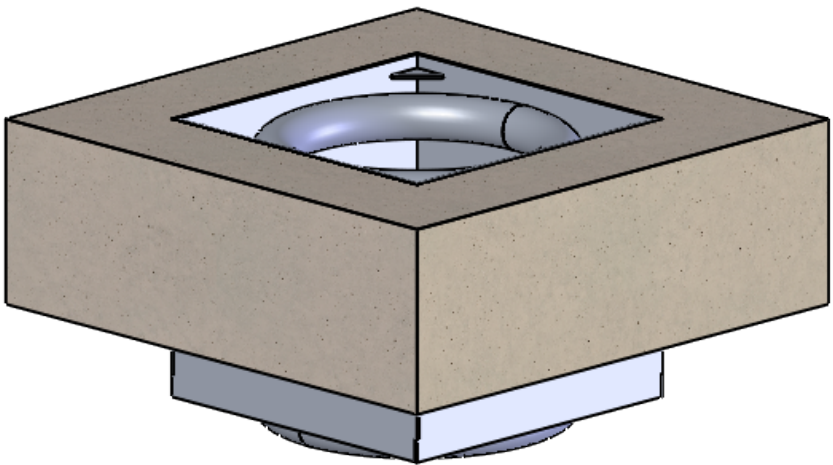
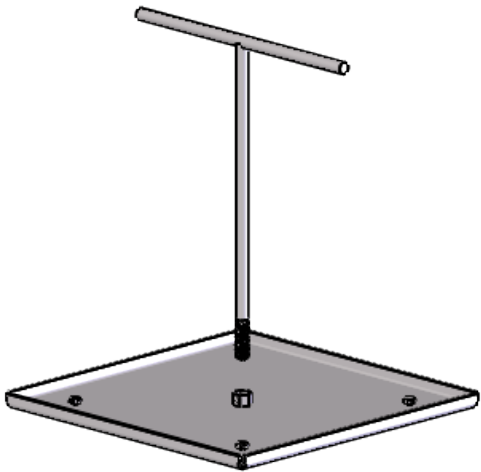
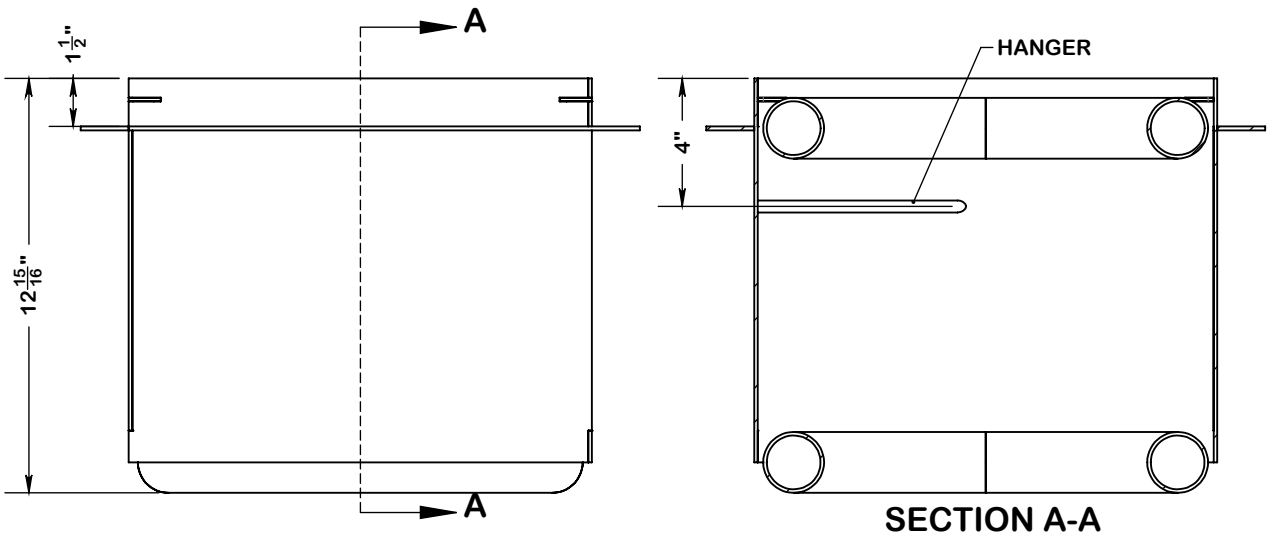
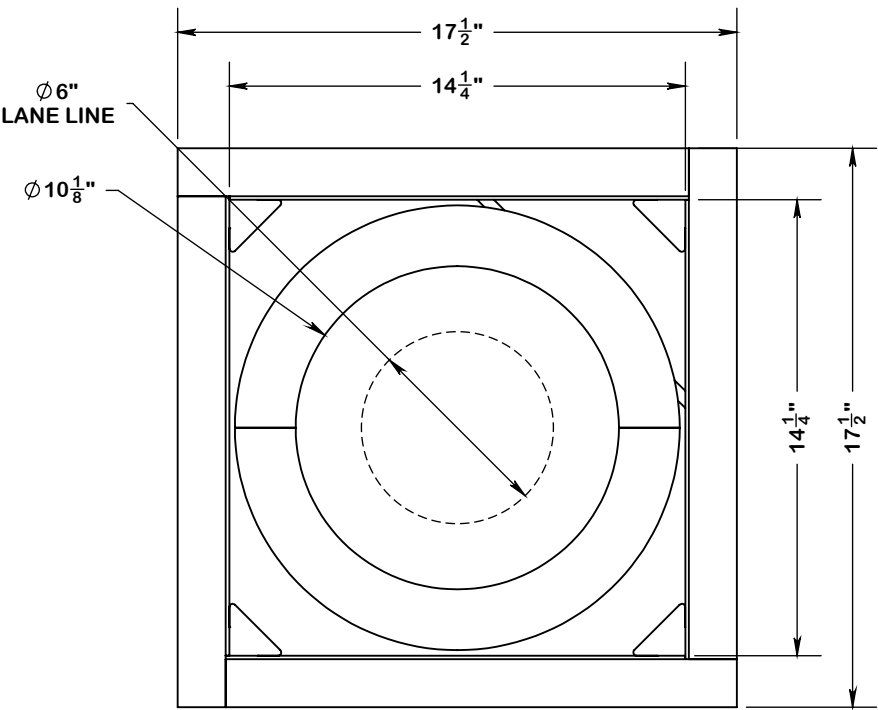
The lid of the Lane Line Trap shall be constructed of 12 gauge 304L series stainless steel sheet. The lid shall have a recess for deck tile, a threaded boss for lifting with the cover handle, and raised features for retaining the tile grout.

Lane Line Trap Cover Handle

The cover handle of the Lane Line Trap shall be fabricated of 1/2" 304L series stainless steel round bar. It shall be T shaped and have a threaded end for lifting the lid out of the main body.

Warranty

Spectrum Standard



7100 Spectrum Lane
800.791.8056
A PLAYCORE Company
Missoula, Montana 59808
www.spectrumaquatics.com

ENGINEERING DATA

PRODUCT:	LANE LINE TRAP -			
MODEL #:	1810494	CATALOG #:		REVISION: A
MATERIAL:	304L SERIES STAINLESS STEEL			
FINISH #:	PASSIVATE IAW ASTM A967			

NOTE:

△ DIMENSIONS VARY WITH SPECIFIC APPLICATIONS. SPECIFICATIONS ARE NOMINAL AND ARE SUBJECT TO CHANGE. PLEASE CONTACT SPECTRUM AQUATICS FOR CUSTOM APPLICATIONS