

SPECTRUM **AQUATICS®**

A PLAYCORE Company



Custom
STAINLESS STEEL POOL RAILS



ABOUT SPECTRUM AQUATICS

At Spectrum Aquatics, we have been dedicated to building your trust and providing reliable competition, recreation, accessibility, and pool deck equipment since 1972. Our team of hardworking and committed individuals takes great pride in crafting high-quality and custom products at our shop in Missoula, Montana. By combining our expertise and passion for innovation, we consistently strive to surpass your expectations and deliver exceptional solutions to meet your unique needs.

Choosing Spectrum Aquatics means you're embracing unparalleled professionalism, meticulous attention to detail, and exemplary customer service. It's our privilege to be recognized as your dependable ally in the aquatics industry.

"At Spectrum Aquatics, custom stainless steel fabrication isn't just a service—it's a cornerstone of who we are.

We've built a reputation as the go-to experts in the aquatics industry for creating precision-crafted rail systems that are as functional as they are visually impactful.

No two facilities are the same, which is why we approach every project with a fresh perspective, engineering each solution to meet the exact needs of our clients. Whether you're working on a new build or a complex renovation, our team brings decades of experience, industry-leading craftsmanship, and a deep commitment to quality and performance.

If you can dream it, we can make it happen—and we'll work with you every step of the way to bring that vision to life."

— Shane Clagett, General Manager, Spectrum Aquatics



Scan to Visit our Website

TO ORDER THE SPECTRUM AQUATICS® PRODUCTS IN THIS CATALOG, PLEASE CONTACT YOUR LOCAL REPRESENTATIVE AT THE PHONE NUMBER BELOW OR VISIT OUR WEBSITE AT:
WWW.SPECTRUMPRODUCTS.COM

CUSTOM IS THE STANDARD

Custom Stainless Steel Pool Rails

A look of elegance where it is least expected.

From gently sloping curves to intricate custom arches, your creativity sets the limit when it comes to designing rails.

While our catalog features several classic rails as a starting point, “standard” isn’t in our vocabulary.

Think of these options as inspiration—every stair and handrail we create is fully customized to complement the unique lines and layout of your pool.

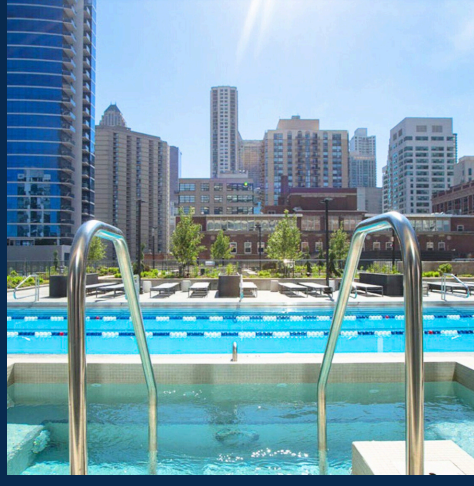
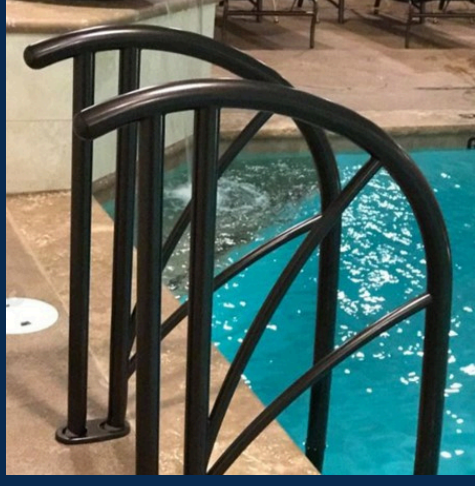
Stainless steel stair, hand, and grab rails are more than just functional—they’re an opportunity to add elegance and sophistication to your aquatic space. Turn a required feature into a striking design element that elevates the entire environment.

Every rail is handcrafted to perfection by skilled artisans with over 100 years of combined welding expertise. Each piece is meticulously welded, then hand-polished to a flawless, mirror-like finish—delivering a product that’s as durable as it is beautiful.

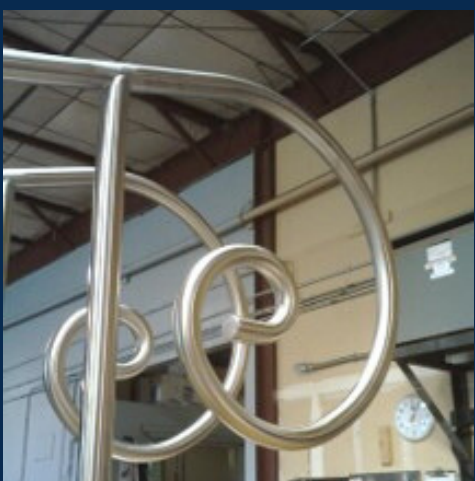
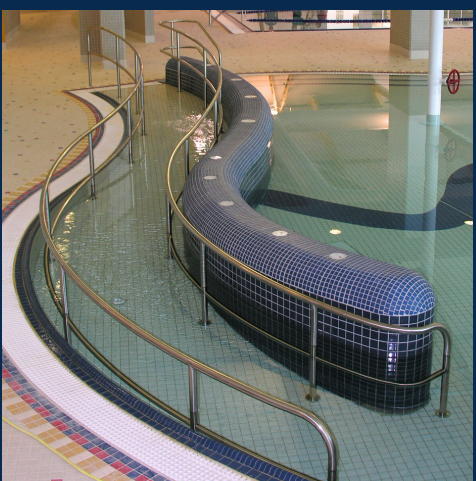
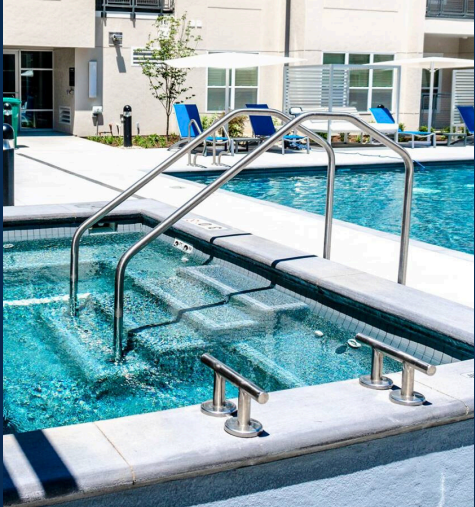
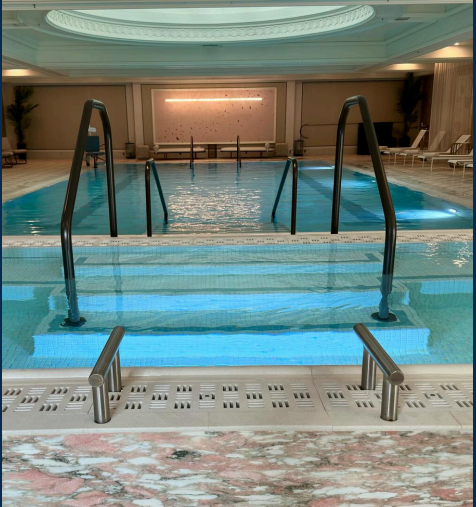
The Venetian Hotel - Las Vegas

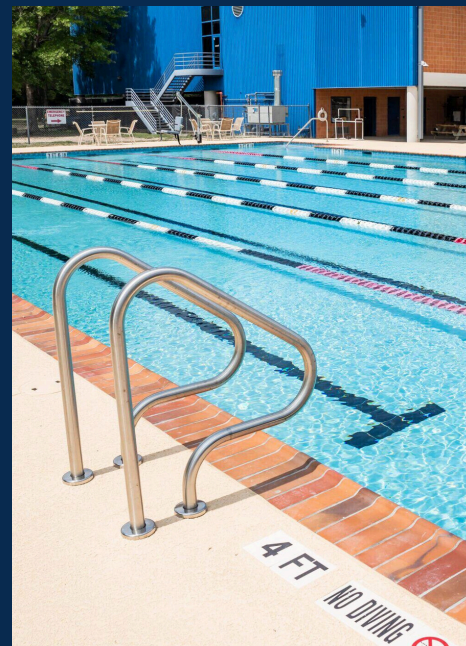
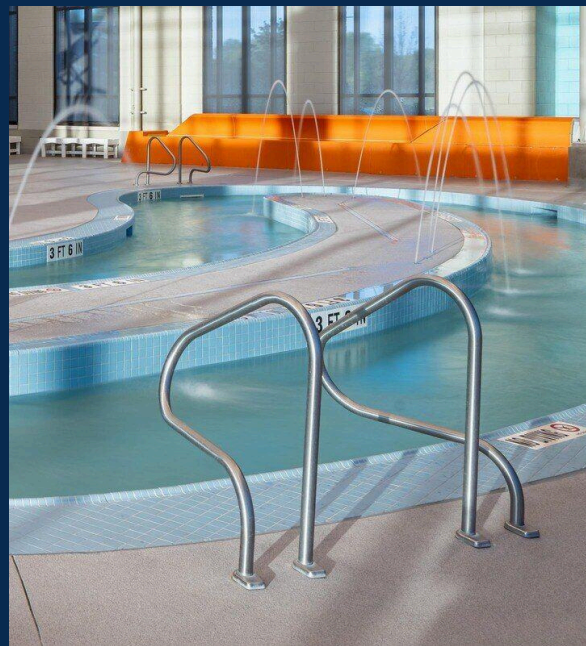
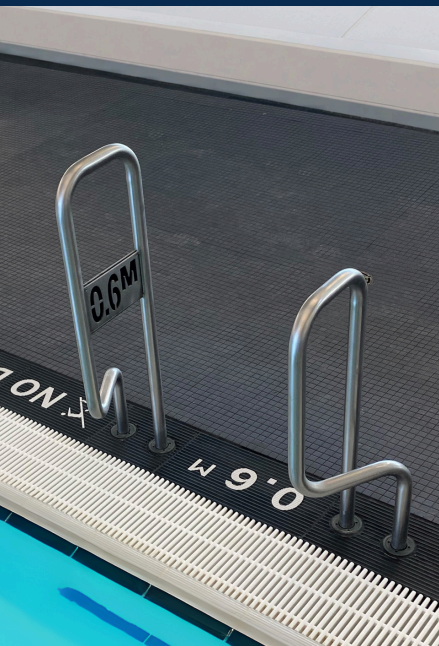


WHY FIT IN WHEN YOU CAN STAND OUT

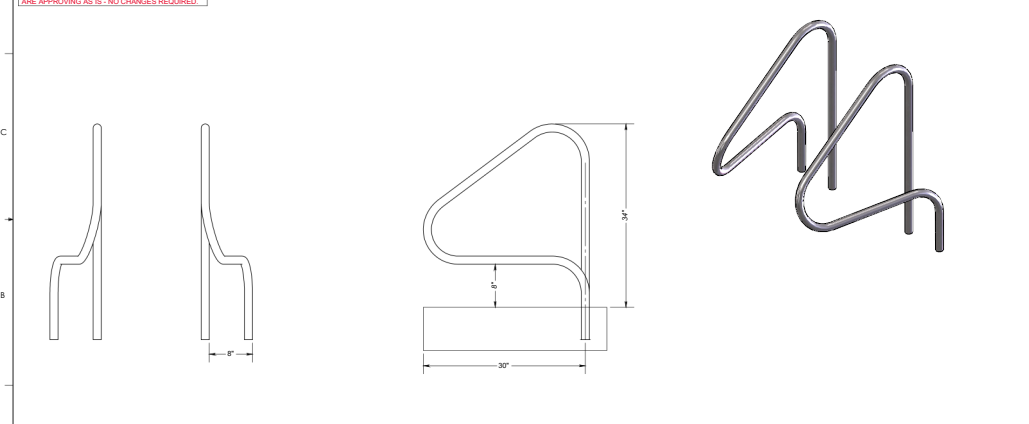


BECAUSE ONE SIZE
NEVER FITS ALL





Stainless Steel Grab Rails

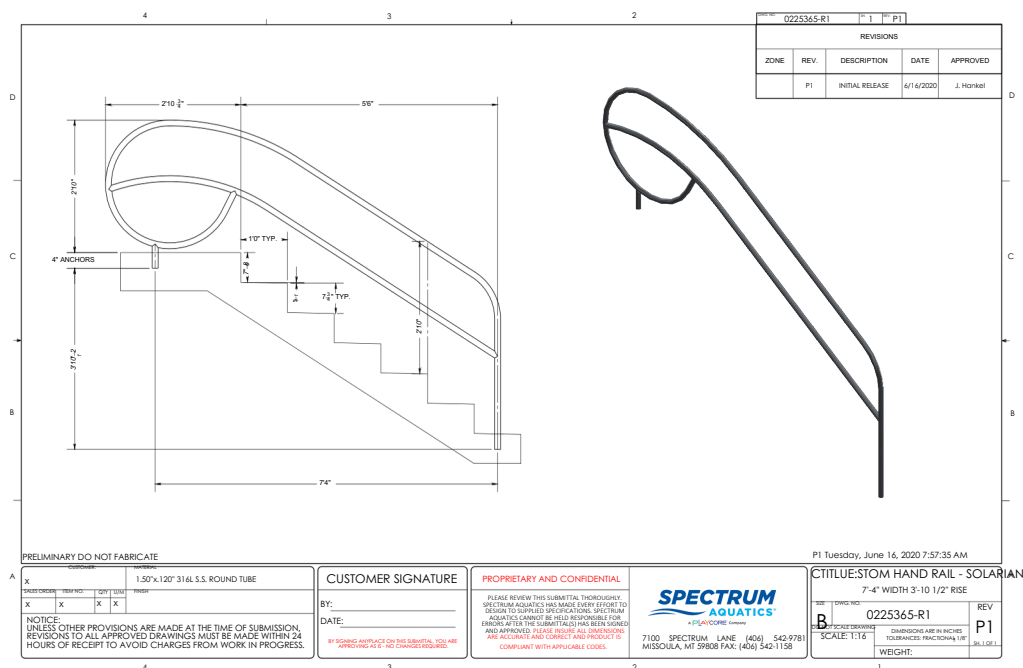
CUSTOMER SIGNATURE				0254552-R2				1 P1							
PART#:				REVISIONS											
BY:				ZONE				REV							
DATE:				P1				INITIAL RELEASE							
QTY:				DATE				APPROVED							
				3/16/2023				Z. FROBER							
<p>BY SIGNING ANYPLACE ON THIS SUBMITTAL, YOU ARE APPROVING AS IS - NO CHANGES REQUIRED.</p>															
															
PRELIMINARY DO NOT FABRICATE															
P1 Thursday, March 16, 2023 11:44:12 AM															
<p>CUSTOMER SIGNATURE</p> <p>BY: _____</p> <p>DATE: _____</p> <p>BY SIGNING ANYPLACE ON THIS SUBMITTAL, YOU ARE APPROVING AS IS - NO CHANGES REQUIRED.</p>				<p>PROPRIETARY AND CONFIDENTIAL</p> <p>PLEASE REVIEW THIS SUBMITTAL THOROUGHLY. SPECTRUM AQUATICS HAS MADE EVERY EFFORT TO DESIGN TO SUPPLIED SPECIFICATIONS. SPECTRUM AQUATICS CANNOT BE HELD RESPONSIBLE FOR ERRORS AFTER THE SUBMITTAL HAS BEEN SIGNED AND APPROVED. PLEASE REVIEW ALL DIMENSIONS ARE ACCURATE AND CORRECT AND PRODUCE IT COMPLIANT WITH APPLICABLE CODES.</p>				<p>SPECTRUM AQUATICS A PLATYCOM COMPANY</p> <p>7100 SPECTRUM LANE (406) 542-9781 MOSCULA, MT 59808 FAX: (406) 542-1158</p>				<p>POWDER COATED CISCO STANDARD 35124-30-120</p> <p>0254552-R2</p> <p>SCALE: 1:12</p> <p>WEIGHT: 35.808</p>			



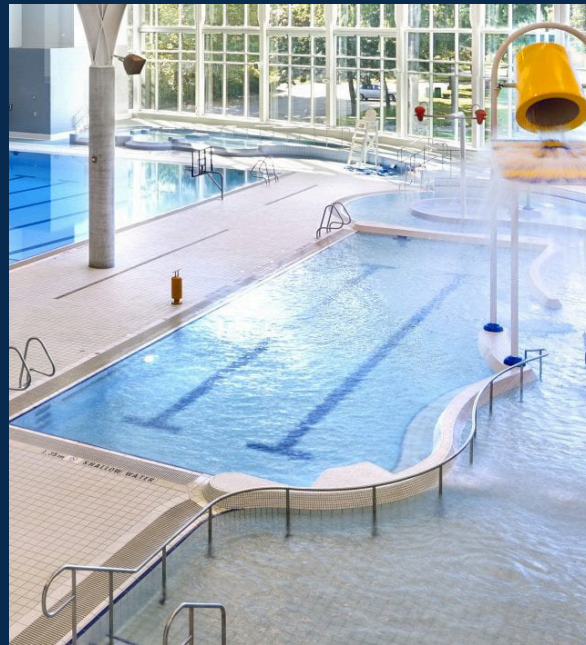
Brownsburg High School - Brownsburg, IN



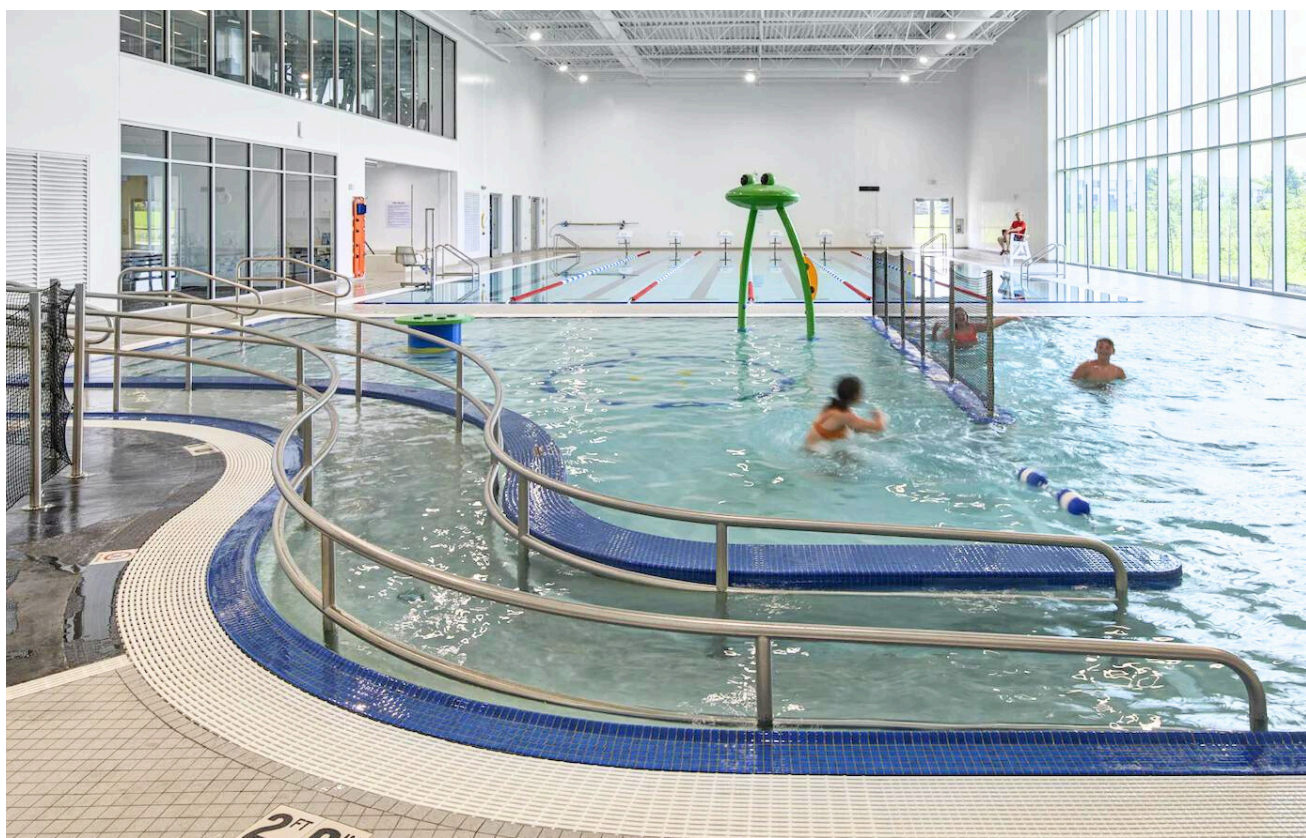
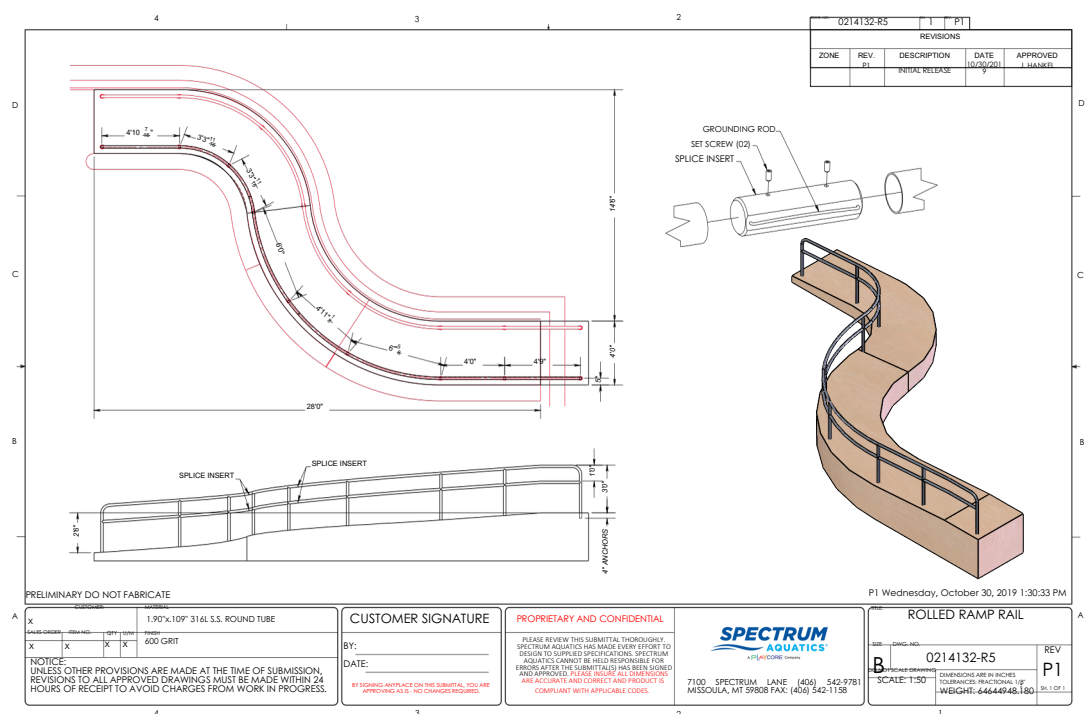
Stainless Steel Stair and Hand Rails



Milburn Country Club - Overlook, KS



Stainless Steel Access Ramp Rails



Marion YMCA & Community Rec Center - Marion, OH

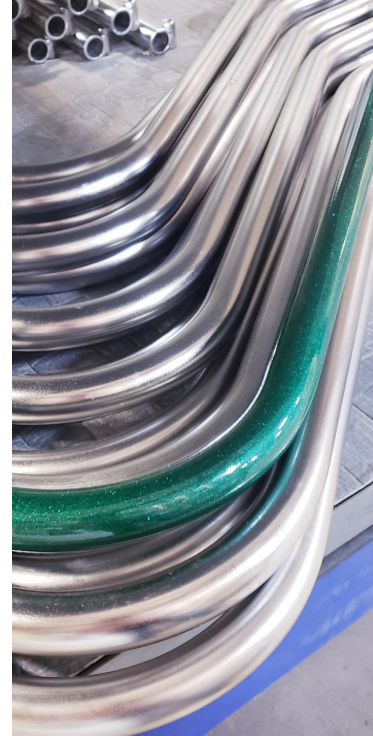
POWDER COATING

Exceptional application ensures long-lasting results.

Powder coating is available for our rails and pool lifts, allowing you to tailor the design to your specific branding or preferences.

Applied with precision, our powder coating adheres flawlessly to stainless steel, ensuring a finish free from any chipping or cracking. The secret behind our powder coating durability... Our manufacturing process.

Defined by precision and driven by an unwavering commitment to quality, every surface is meticulously prepared for powder coating through rigorous standards. Our stainless steel welds are carefully hand-polished to eliminate impurities and prevent future corrosion in aquatic environments. Each powder-coated component then undergoes a refined, time-tested process developed through years of manufacturing expertise—ensuring exceptional durability, performance, and a flawless finish.



Whatever the color, we've got you covered.



Westfield Washington Aquatic Center - Westfield, IN

We offer powder coating in the full range of RAL colors...

Giving you endless options to match your branding and elevate your facility.

Choose from our standard selections or customize any component to align perfectly with your vision. No matter the color, we're here to help you create a space that stands out with both style and performance!



Driftwood Golf and Country Club - Driftwood, TX

3-STEP PROCESS

The Shine Says It All

Every piece of stainless steel that leaves our Missoula, MT facility is meticulously hand polished. This includes all rails and pool chair lifts and ensures there is no mistaking Spectrum Aquatics stainless steel when compared to the steel of our competitors.

The journey toward the Spectrum Aquatics stainless steel shine starts as we exclusively source our stainless steel from carefully selected mills across the United States. Working only with the highest quality American-made stainless steel provides us with a pure product free from imperfections. Additionally, we treat every piece of steel with our **3-Step Process** of Electropolishing, Passivation, and Spectra Shield™ coating, which guarantees you the utmost longevity in even the harshest aquatic environments.

- **Electropolishing** removes impurities and other embedded contaminants that form during mechanical polishing. The result is a smooth, mirror-like finish where residue and even single-cell bacteria, will have no place to lodge. Combining electropolishing with passivation achieves a smooth chromium-rich surface with improved cleanability and superior corrosion resistance.
- **Passivation** is a non-electrical metal finishing process to help prevent metal surfaces from corrosion and pitting. The chemical treatment for stainless steel and other alloys makes the metal more resistant to rust.
- **Spectra Shield™** is a proprietary, high-quality blend of chemicals formulated to protect all grades of stainless steel from moisture and the harsh atmospheric chemicals commonly found in and around the aquatic environment. Spectra Shield works by embedding itself into the microstructure of the stainless steel surface grain, keeping water and chemicals out of the surface structure. Once the treatment is applied, it cannot be removed with water or other cleaning solutions. Spectra Shield does not change the surface appearance or the feel of the stainless steel, and most importantly, it provides a very safe yet corrosion-resistant finish.

Meeting Federal ADA Requirements doesn't mean sacrificing style or elegance...

Spectrum Aquatics® specializes in crafting functional and beautiful custom railings that comply with the 2010 ADA Standards for Accessible Design. Anchors & escutcheons are sold separately.

Rails are fabricated from a variety of stainless steel material types (304L and 316L) as well as a variety of outside diameters and wall thicknesses (1.25" x .065", 1.90" x .065", 1.50" x .083", 1.90" x .109", 1.50" x .120", 1.90"x .145"). Custom color powder- coating options are also available.

Form & Function

Spectrum Aquatics' in-house engineering and design team turns your ideas into reality. Our high-quality stainless steel and state-of-the-art manufacturing processes fabricate rails that fit your specifications.

Custom Rail Options

- Diving Tower
- Railings Guard
- Rails Grab Rails
- Hand Rails
- Therapy Rails In-
- Pool Exercise Rails
- Ramp Rails Stair Rails
- Stadium Rails
- Spectator/Crowd
- Control Rails

Material Type & Grade Available

- 304L - Stainless Steel 316L - Marine Grade
- Stainless Steel Powder Coat – Available in all RAL
- colors & a variety of finishes
- Variety of outside diameters and wall thicknesses
- **Square/rectangular tubing options available**

MADE FROM 100% USA STAINLESS STEEL

Crafted from premium stainless steel, our rails are available in both 304L and 316L grades, ensuring durability in a variety of environments, including standard and highly corrosive settings. Whether you require robust support for high-traffic areas or sleek designs for modern aquatic spaces, our rails are built to provide safety, longevity, and style.



Instant Access. Anytime. Anywhere.
Need answers? We're always just a click away.



Scan to Visit our Online Store

Keep your stainless steel looking as flawless as the day it left our shop. Spectra-Clean™ is the trusted solution we count on to maintain—and restore—that signature shine. Ready to refresh your equipment? Shop now on our online store.



Scan to Contact Us:

Have a question? We're here to help.

Reach out anytime using the Contact Us form on our website. Just select the team member you'd like to connect with and let us know how we can assist. We'll get back to you as soon as possible.



Scan to Visit our Support Page:

Have you explored our Support Page?

It's your go-to resource for everything Spectrum Aquatics—packed with FAQs, how-to videos, tips, and downloadable guides to help you get the most out of your equipment.

Give us a call at 800.791.8056 during regular business hours, or email us anytime at info@spectrumproducts.com—we're here to help!



800.791.8056

www.spectrumproducts.com

info@spectrumproducts.com

7100 Spectrum Lane | Missoula, MT | 59808